

ARG43403 anti-HKDC1 antibody

Package: 100 µl
Store at: -20°C

Summary

| | |
|---------------------|---|
| Product Description | Rabbit Polyclonal antibody recognizes HKDC1 |
| Tested Reactivity | Hu |
| Tested Application | IP, WB |
| Host | Rabbit |
| Clonality | Polyclonal |
| Isotype | IgG |
| Target Name | HKDC1 |
| Species | Human |
| Immunogen | Recombinant protein of Human HKDC1. |
| Conjugation | Un-conjugated |
| Alternate Names | Hexokinase domain-containing protein 1; EC 2.7.1.1; Putative hexokinase HKDC1 |

Application Instructions

| | | |
|-------------------|--|----------|
| Application table | Application | Dilution |
| | IP | 1:20 |
| | WB | 1:1000 |
| Application Note | * The dilutions indicate recommended starting dilutions and the optimal dilutions or concentrations should be determined by the scientist. | |
| Positive Control | HeLa | |
| Observed Size | ~ 110 kDa | |

Properties

| | |
|---------------------|---|
| Form | Liquid |
| Purification | Affinity purified. |
| Buffer | 50 mM Tris-Glycine (pH 7.4), 150 mM NaCl, 0.01% Sodium azide, 40% Glycerol and 0.05% BSA. |
| Preservative | 0.01% Sodium azide |
| Stabilizer | 40% Glycerol and 0.05% BSA |
| Concentration | Batch dependent |
| Storage instruction | For continuous use, store undiluted antibody at 2-8°C for up to a week. For long-term storage, aliquot and store at -20°C. Storage in frost free freezers is not recommended. Avoid repeated freeze/thaw cycles. Suggest spin the vial prior to opening. The antibody solution should be gently mixed before use. |

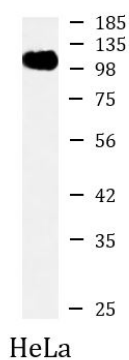
Note

For laboratory research only, not for drug, diagnostic or other use.

Bioinformation

| | |
|----------------|--|
| Gene Symbol | HKDC1 |
| Gene Full Name | hexokinase domain containing 1 |
| Background | This gene encodes a member of the hexokinase protein family. The encoded protein is involved in glucose metabolism, and reduced expression may be associated with gestational diabetes mellitus. High expression of this gene may also be associated with poor prognosis in hepatocarcinoma. [provided by RefSeq, Sep 2016] |
| Function | Catalyzes the phosphorylation of hexose to hexose 6-phosphate, although at very low level compared to other hexokinases (PubMed:30517626). Has low glucose phosphorylating activity compared to other hexokinases (PubMed:30517626). Involved in glucose homeostasis and hepatic lipid accumulation. Required to maintain whole-body glucose homeostasis during pregnancy; however additional evidences are required to confirm this role (By similarity). [UniProt] |
| Calculated Mw | 103 kDa |

Images



ARG43403 anti-HKDC1 antibody WB image

Western blot: HeLa cell lysate stained with ARG43403 anti-HKDC1 antibody at 1:1000 dilution.