

ARG43404 anti-HKDC1 antibody

Package: 50 µl
Store at: -20°C

Summary

Product Description	Rabbit Polyclonal antibody recognizes HKDC1
Tested Reactivity	Hu, Ms, Rat
Tested Application	FACS, ICC/IF, IHC-P
Host	Rabbit
Clonality	Polyclonal
Isotype	IgG
Target Name	HKDC1
Species	Human
Immunogen	Recombinant protein within aa. 260-460 of Human HKDC1.
Conjugation	Un-conjugated
Alternate Names	Hexokinase domain-containing protein 1; EC 2.7.1.1; Putative hexokinase HKDC1

Application Instructions

Application table	Application	Dilution
	FACS	1:50 - 1:100
	ICC/IF	1:50 - 1:200
	IHC-P	1:50 - 1:200
Application Note	* The dilutions indicate recommended starting dilutions and the optimal dilutions or concentrations should be determined by the scientist.	

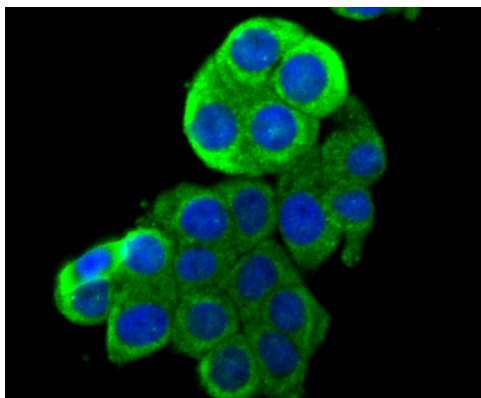
Properties

Form	Liquid
Purification	Affinity purified.
Buffer	PBS (pH 7.2), 0.02% Sodium azide and 50% Glycerol.
Preservative	0.02% Sodium azide
Stabilizer	50% Glycerol
Concentration	1 mg/ml
Storage instruction	For continuous use, store undiluted antibody at 2-8°C for up to a week. For long-term storage, aliquot and store at -20°C. Storage in frost free freezers is not recommended. Avoid repeated freeze/thaw cycles. Suggest spin the vial prior to opening. The antibody solution should be gently mixed before use.
Note	For laboratory research only, not for drug, diagnostic or other use.

Bioinformation

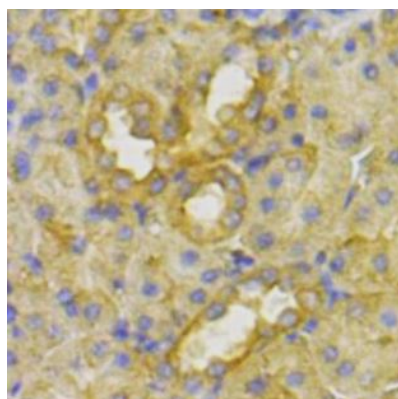
Gene Symbol	HKDC1
Gene Full Name	hexokinase domain containing 1
Background	This gene encodes a member of the hexokinase protein family. The encoded protein is involved in glucose metabolism, and reduced expression may be associated with gestational diabetes mellitus. High expression of this gene may also be associated with poor prognosis in hepatocarcinoma. [provided by RefSeq, Sep 2016]
Function	Catalyzes the phosphorylation of hexose to hexose 6-phosphate, although at very low level compared to other hexokinases (PubMed:30517626). Has low glucose phosphorylating activity compared to other hexokinases (PubMed:30517626). Involved in glucose homeostasis and hepatic lipid accumulation. Required to maintain whole-body glucose homeostasis during pregnancy; however additional evidences are required to confirm this role (By similarity). [UniProt]
Calculated Mw	103 kDa

Images



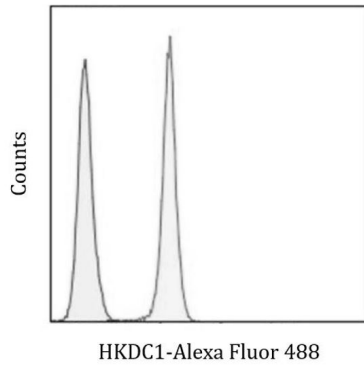
ARG43404 anti-HKDC1 antibody ICC/IF image

IF: LOVO cells were fixed in paraformaldehyde and permeabilized with 0.25% Triton X100/PBS. Cells were stained with ARG43404 anti-HKDC1 antibody (green). DAPI (blue) for nuclear staining.



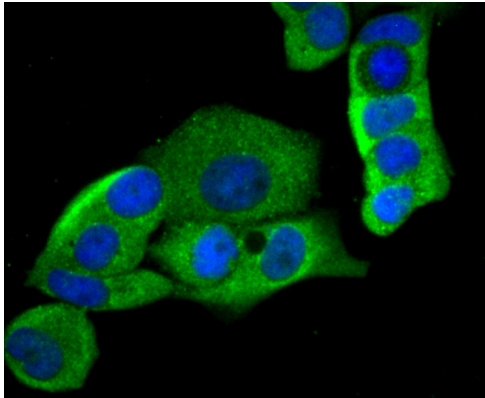
ARG43404 anti-HKDC1 antibody IHC-P image

Immunohistochemistry: Paraffin-embedded Rat kidney tissue stained with ARG43404 anti-HKDC1 antibody.



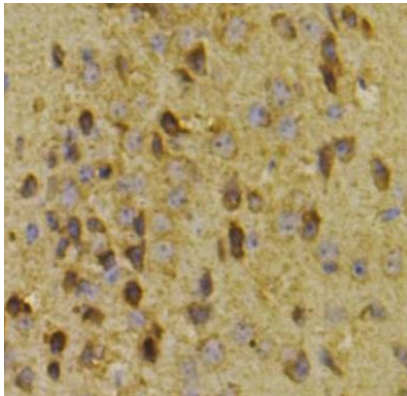
ARG43404 anti-HKDC1 antibody FACS image

Flow Cytometry: LOVO cells stained with ARG43404 anti-HKDC1 antibody at 1:100 dilution (right histogram) or without primary antibody as control (left histogram), followed by incubation with Alexa Fluor® 488 labelled secondary antibody.



ARG43404 anti-HKDC1 antibody ICC/IF image

IF: MCF-7 cells were fixed in paraformaldehyde and permeabilized with 0.25% Triton X100/PBS. Cells were stained with ARG43404 anti-HKDC1 antibody (green). DAPI (blue) for nuclear staining.



ARG43404 anti-HKDC1 antibody IHC-P image

Immunohistochemistry: Paraffin-embedded Mouse brain tissue stained with ARG43404 anti-HKDC1 antibody.