

## ARG43438 anti-STK38L / NDR2 antibody

Package: 100 µl  
Store at: -20°C

### Summary

Product Description	Rabbit Polyclonal antibody recognizes STK38L / NDR2
Tested Reactivity	Hu, Ms, Rat
Tested Application	ICC/IF, WB
Specificity	This antibody might also cross-react to STK38 / NDR1 (88%) based on immunogen sequence analysis.
Host	Rabbit
Clonality	Polyclonal
Isotype	IgG
Target Name	STK38L / NDR2
Species	Human
Immunogen	Recombinant fusion protein corresponding to aa. 165-464 of Human STK38L / NDR2 (NP_055815.1).
Conjugation	Un-conjugated
Alternate Names	Serine/threonine-protein kinase 38-like; EC 2.7.11.1; Nuclear Dbf2-related kinase 2; NDR2 protein kinase; NDR2

### Application Instructions

Application table	Application	Dilution
	ICC/IF	1:50 - 1:200
	WB	1:200 - 1:2000
Application Note	* The dilutions indicate recommended starting dilutions and the optimal dilutions or concentrations should be determined by the scientist.	
Positive Control	Rat brain	
Observed Size	~ 55 kDa	

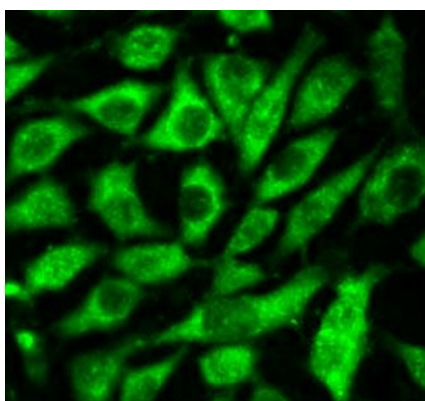
### Properties

Form	Liquid
Purification	Affinity purified.
Buffer	PBS (pH 7.3), 0.02% Sodium azide and 50% Glycerol.
Preservative	0.02% Sodium azide
Stabilizer	50% Glycerol
Storage instruction	For continuous use, store undiluted antibody at 2-8°C for up to a week. For long-term storage, aliquot and store at -20°C. Storage in frost free freezers is not recommended. Avoid repeated freeze/thaw cycles. Suggest spin the vial prior to opening. The antibody solution should be gently mixed before use.

## Bioinformation

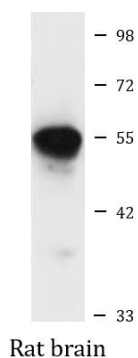
Gene Symbol	STK38L
Gene Full Name	serine/threonine kinase 38 like
Function	Involved in the regulation of structural processes in differentiating and mature neuronal cells. [UniProt]
Calculated Mw	54 kDa
Cellular Localization	Cytoplasm. Cytoplasm, cytoskeleton. Membrane. Note=Associated with the actin cytoskeleton. Co-localizes with STK24/MST3 in the membrane. [UniProt]

## Images



ARG43438 anti-STK38L / NDR2 antibody ICC/IF image

Immunofluorescence: L929 cells stained with ARG43438 anti-STK38L / NDR2 antibody at 1:100 dilution.



Rat brain

ARG43438 anti-STK38L / NDR2 antibody WB image

Western blot: 25 µg of Rat brain lysate stained with ARG43438 anti-STK38L / NDR2 antibody at 1:1000 dilution.