

## ARG43466 anti-ATG16L1 antibody

Package: 100 µl  
Store at: -20°C

### Summary

Product Description	Rabbit Polyclonal antibody recognizes ATG16L1.
Tested Reactivity	Hu, Ms, Rat
Tested Application	ICC/IF, IHC-P, WB
Host	Rabbit
Clonality	Polyclonal
Isotype	IgG
Target Name	ATG16L1
Species	Human
Immunogen	Synthetic peptide derived from human ATG16L1
Conjugation	Un-conjugated
Alternate Names	IBD10; WDR30; APG16L; ATG16A; ATG16L

### Application Instructions

Application table	Application	Dilution
	ICC/IF	1:50 - 1:200
	IHC-P	1:50 - 1:200
	WB	1:500 - 1:2000
Application Note	* The dilutions indicate recommended starting dilutions and the optimal dilutions or concentrations should be determined by the scientist.	

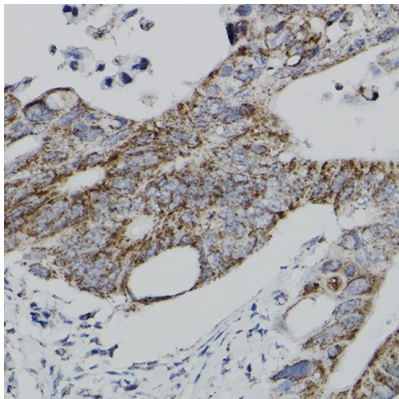
### Properties

Form	Liquid
Purification	Affinity purified.
Buffer	PBS (pH 7.3), 0.02% Sodium azide and 50% Glycerol.
Preservative	0.02% Sodium azide
Stabilizer	50% Glycerol
Storage instruction	For continuous use, store undiluted antibody at 2-8°C for up to a week. For long-term storage, aliquot and store at -20°C or below. Storage in frost free freezers is not recommended. Avoid repeated freeze/thaw cycles. Suggest spin the vial prior to opening. The antibody solution should be gently mixed before use.
Note	For laboratory research only, not for drug, diagnostic or other use.

Bioinformation

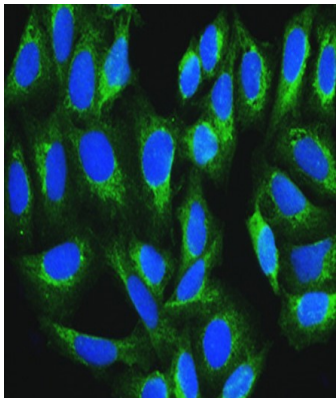
Gene Symbol	ATG16L1
Gene Full Name	autophagy related 16-like 1
Background	The protein encoded by this gene is part of a large protein complex that is necessary for autophagy, the major process by which intracellular components are targeted to lysosomes for degradation. Defects in this gene are a cause of susceptibility to inflammatory bowel disease type 10 (IBD10). Several transcript variants encoding different isoforms have been found for this gene.[provided by RefSeq, Jun 2010]
Function	Plays an essential role in autophagy: interacts with ATG12-ATG5 to mediate the conjugation of phosphatidylethanolamine (PE) to LC3 (MAP1LC3A, MAP1LC3B or MAP1LC3C), to produce a membrane-bound activated form of LC3 named LC3-II. Thereby, controls the elongation of the nascent autophagosomal membrane. [UniProt]

Images



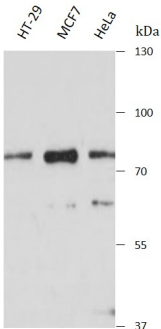
ARG43466 anti-ATG16L1 antibody IHC-P image

Immunohistochemistry: Human colon stained with ARG43466 anti-ATG16L1 antibody at 1:100 dilution.



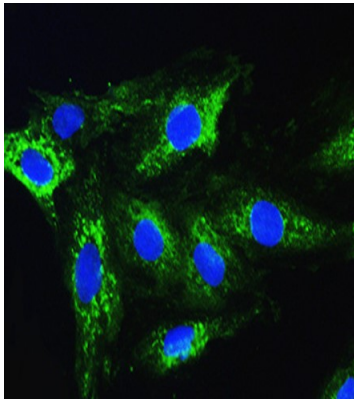
ARG43466 anti-ATG16L1 antibody ICC/IF image

Immunofluorescence: U2OS stained with ARG43466 anti-ATG16L1 antibody at 1:100 dilution.



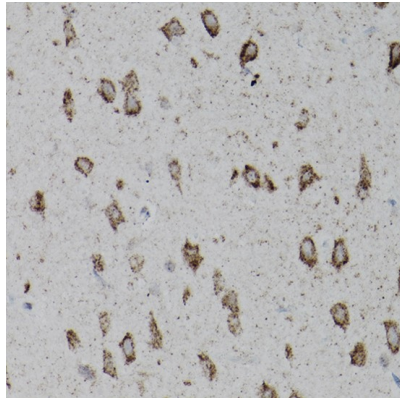
ARG43466 anti-ATG16L1 antibody WB image

Western blot: HT-29, MCF7 and HeLa stained with ARG43466 anti-ATG16L1 antibody at 1:1000 dilution.



ARG43466 anti-ATG16L1 antibody ICC/IF image

Immunofluorescence: H9c2 stained with ARG43466 anti-ATG16L1 antibody at 1:100 dilution.



ARG43466 anti-ATG16L1 antibody IHC-P image

Immunohistochemistry: Mouse brain stained with ARG43466 anti-ATG16L1 antibody at 1:100 dilution.