

ARG43468 anti-RBM39 / HCC1 antibody

Package: 100 µl
Store at: -20°C

Summary

Product Description	Rabbit Polyclonal antibody recognizes RBM39 / HCC1.
Tested Reactivity	Hu, Ms, Rat
Tested Application	ICC/IF, IHC-P, WB
Host	Rabbit
Clonality	Polyclonal
Isotype	IgG
Target Name	RBM39 / HCC1
Species	Human
Immunogen	Synthetic peptide derived from human RBM39 / HCC1
Conjugation	Un-conjugated
Alternate Names	HCC1; CAPER; RNPC2; FSAP59; CAPERalpha

Application Instructions

Application table	Application	Dilution
	ICC/IF	1:50 - 1:200
	IHC-P	1:50 - 1:200
	WB	1:500 - 1:2000
Application Note	* The dilutions indicate recommended starting dilutions and the optimal dilutions or concentrations should be determined by the scientist.	

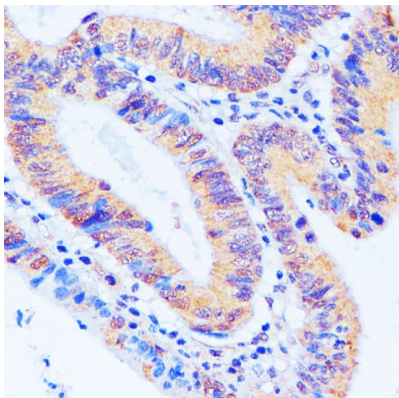
Properties

Form	Liquid
Purification	Affinity purified.
Buffer	PBS (pH 7.3), 0.02% Sodium azide and 50% Glycerol.
Preservative	0.02% Sodium azide
Stabilizer	50% Glycerol
Storage instruction	For continuous use, store undiluted antibody at 2-8°C for up to a week. For long-term storage, aliquot and store at -20°C or below. Storage in frost free freezers is not recommended. Avoid repeated freeze/thaw cycles. Suggest spin the vial prior to opening. The antibody solution should be gently mixed before use.
Note	For laboratory research only, not for drug, diagnostic or other use.

Bioinformation

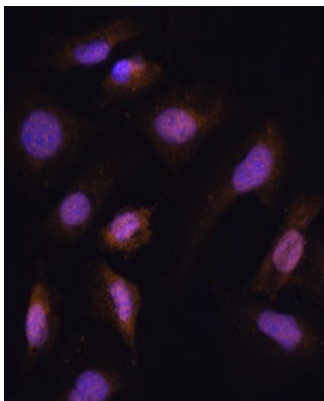
Gene Symbol	RBM39
Gene Full Name	RNA binding motif protein 39
Background	This gene encodes a member of the U2AF65 family of proteins. The encoded protein is found in the nucleus, where it co-localizes with core spliceosomal proteins. It has been shown to play a role in both steroid hormone receptor-mediated transcription and alternative splicing, and it is also a transcriptional coregulator of the viral oncoprotein v-Rel. Multiple transcript variants have been observed for this gene. A related pseudogene has been identified on chromosome X. [provided by RefSeq, Aug 2011]
Function	Transcriptional coactivator for steroid nuclear receptors ESR1/ER-alpha and ESR2/ER-beta, and JUN/AP-1 (By similarity). May be involved in pre-mRNA splicing process. [UniProt]

Images



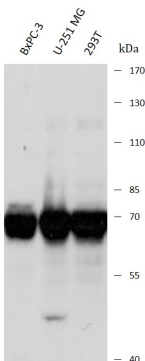
ARG43468 anti-RBM39 / HCC1 antibody IHC-P image

Immunohistochemistry: Human colon stained with ARG43468 anti-RBM39 / HCC1 antibody at 1:100 dilution.



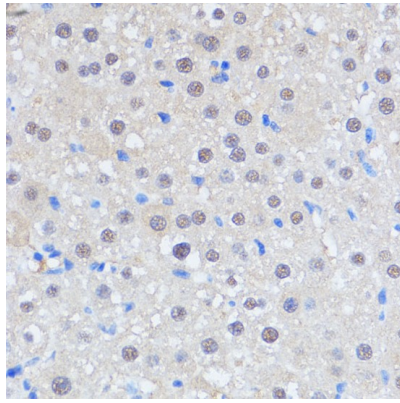
ARG43468 anti-RBM39 / HCC1 antibody ICC/IF image

Immunofluorescence: U-2 OS stained with ARG43468 anti-RBM39 / HCC1 antibody at 1:100 dilution.



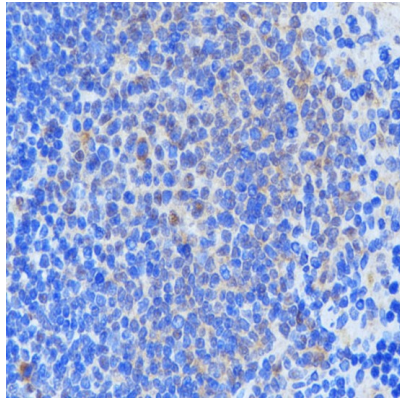
ARG43468 anti-RBM39 / HCC1 antibody WB image

Western blot: BxPC-3, U-251 MG and 293T stained with ARG43468 anti-RBM39 / HCC1 antibody at 1:1000 dilution.



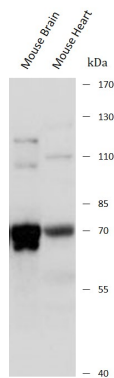
ARG43468 anti-RBM39 / HCC1 antibody IHC-P image

Immunohistochemistry: Rat liver stained with ARG43468 anti-RBM39 / HCC1 antibody at 1:100 dilution.



ARG43468 anti-RBM39 / HCC1 antibody IHC-P image

Immunohistochemistry: Mouse spleen stained with ARG43468 anti-RBM39 / HCC1 antibody at 1:100 dilution.



ARG43468 anti-RBM39 / HCC1 antibody WB image

Western blot: Mouse Brain and Mouse Heart stained with ARG43468 anti-RBM39 / HCC1 antibody at 1:1000 dilution.