

ARG43489 anti-Egr1 antibody

Package: 50 µg
Store at: -20°C

Summary

Product Description	Rabbit Polyclonal antibody recognizes Egr1
Tested Reactivity	Hu, Ms, Rat
Tested Application	WB
Host	Rabbit
Clonality	Polyclonal
Isotype	IgG
Target Name	Egr1
Species	Human
Immunogen	Recombinant protein containing to human Egr1.
Conjugation	Un-conjugated
Alternate Names	EGR1; EGR1; Early Growth Response 1; NGFI-A; AT225; Nerve Growth Factor-Induced Protein A; Early Growth Response Protein 1; Transcription Factor ETR103; KROX-24; ZIF-268; GOS30; TIS8; Transcription Factor Zif268; Zinc Finger Protein Krox-24; Zinc Finger Protein 225; Zinc Finger Gene 225; ZIF268; ZNF225; EGR-1; 225; KROX24

Application Instructions

Application table	Application	Dilution
	WB	0.1-0.5 µg/ml
Application Note	* The dilutions indicate recommended starting dilutions and the optimal dilutions or concentrations should be determined by the scientist.	
Observed Size	75 kDa	

Properties

Form	Liquid
Purification	Affinity purified
Buffer	0.2% Na2HPO4, 0.9% NaCl, 0.05% Sodium azide and 4% Trehalose.
Preservative	0.05% Sodium azide
Stabilizer	4% Trehalose
Concentration	0.5 mg/ml
Storage instruction	For continuous use, store undiluted antibody at 2-8°C for up to a week. For long-term storage, aliquot and store at -20°C or below. Storage in frost free freezers is not recommended. Avoid repeated freeze/thaw cycles. Suggest spin the vial prior to opening. The antibody solution should be gently mixed before use.

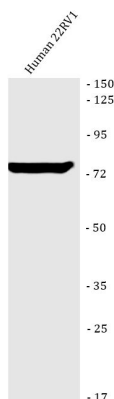
Note

For laboratory research only, not for drug, diagnostic or other use.

Bioinformation

Gene Symbol	EGR1
Gene Full Name	Early Growth Response 1
Background	The protein encoded by this gene belongs to the EGR family of C2H2-type zinc-finger proteins. It is a nuclear protein and functions as a transcriptional regulator. The products of target genes it activates are required for differentiation and mitogenesis. Studies suggest this is a cancer suppressor gene. [provided by RefSeq, Dec 2014]
Function	Binds double-stranded target DNA, irrespective of the cytosine methylation status. [UniProt]
Calculated Mw	58 kDa
PTM	Isopeptide bond; Ubl conjugation. [UniProt]
Cellular Localization	Nucleus; Cytoplasm. [UniProt]

Images



ARG43489 anti-Egr1 antibody WB image

Western blot: Human 22RV1 stained with ARG43489 anti-Egr1 antibody at 0.5 µg/ml dilution.