

ARG43595 anti-TNMD / Tenomodulin antibody

Package: 100 µl
Store at: -20°C

Summary

Product Description	Rabbit Polyclonal antibody recognizes TNMD / Tenomodulin
Tested Reactivity	Hu
Predict Reactivity	Ms, Rat
Tested Application	IHC-P, WB
Host	Rabbit
Clonality	Polyclonal
Isotype	IgG
Target Name	TNMD / Tenomodulin
Species	Human
Immunogen	Synthetic peptide derived from Human TNMD / Tenomodulin.
Conjugation	Un-conjugated
Alternate Names	TEM; CHM1L; BRICD4; Tenomodulin; TeM; hTeM; Chondromodulin-1-like protein; ChM1L; hChM1L; Chondromodulin-I-like protein; Myodulin; Tendin

Application Instructions

Application table	Application	Dilution
	IHC-P	1:30 - 1:150
	WB	1:400 - 1:2000
Application Note	* The dilutions indicate recommended starting dilutions and the optimal dilutions or concentrations should be determined by the scientist.	
Positive Control	WB: Human fetal liver tissue lysate. IHC-P: Human thyroid cancer tissue.	
Observed Size	37 kDa	

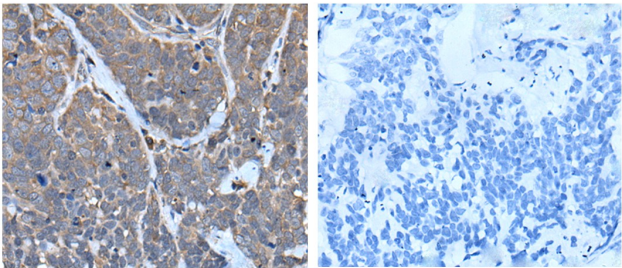
Properties

Form	Liquid
Purification	Affinity purification with immunogen.
Buffer	PBS (pH 7.4), 0.05% Sodium azide and 40% Glycerol.
Preservative	0.05% Sodium azide
Stabilizer	40% Glycerol
Storage instruction	For continuous use, store undiluted antibody at 2-8°C for up to a week. For long-term storage, aliquot and store at -20°C. Storage in frost free freezers is not recommended. Avoid repeated freeze/thaw cycles. Suggest spin the vial prior to opening. The antibody solution should be gently mixed before use.

Bioinformation

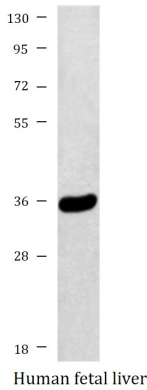
Gene Symbol	TNMD
Gene Full Name	tenomodulin
Background	This gene encodes a protein that is related to chondromodulin-I, which is a cartilage-specific glycoprotein that functions to stimulate chondrocyte growth and to inhibit tube formation of endothelial cells. This protein is also an angiogenesis inhibitor. Genetic variation in this gene is associated with a risk for type 2 diabetes, central obesity and serum levels of systemic immune mediators in a body size-dependent manner. This gene is also a candidate gene for age-related macular degeneration, though a direct link has yet to be demonstrated. [provided by RefSeq, Sep 2009]
Function	May be an angiogenesis inhibitor. [provided by uniprot]
Calculated Mw	37.1 kDa
PTM	Disulfide bond, Glycoprotein, Phosphoprotein
Cellular Localization	Cytoplasm, Membrane, Nucleus

Images



ARG43595 anti-TNMD / Tenomodulin antibody IHC-P image

Immunohistochemistry: Paraffin-embedded Human thyroid cancer tissue stained with ARG43595 anti-TNMD / Tenomodulin antibody (left) at 1:40 dilution, or the same antibody pre-incubated with immunogen (right). (Original magnification: X200).



ARG43595 anti-TNMD / Tenomodulin antibody WB image

Western blot: Human fetal liver lysate stained with ARG43595 anti-TNMD / Tenomodulin antibody.