

## ARG43633 anti-SCP3 antibody

Package: 50 µg  
Store at: -20°C

### Summary

Product Description	Rabbit Polyclonal antibody recognizes SCP3
Tested Reactivity	Hu, Ms, Rat
Tested Application	FACS, ICC/IF, IHC-P, WB
Host	Rabbit
Clonality	Polyclonal
Isotype	IgG
Target Name	SCP3
Species	Human
Immunogen	Recombinant protein fragment corresponding to a.a. 75-236 of Human SCP3 protein.
Conjugation	Un-conjugated
Alternate Names	Synaptonemal complex protein 3; SPGF4; COR1; SCP-3; SCP3

### Application Instructions

Application table	Application	Dilution
	FACS	1 - 3 µg / 1X10 <sup>6</sup> cells
	ICC/IF	1:50 - 1:100
	IHC-P	1:50 - 1:250
	WB	1:500 - 1:2000
Application Note	IHC-P: Antigen Retrieval: Boil tissue section in EDTA buffer (pH 8.0). * The dilutions indicate recommended starting dilutions and the optimal dilutions or concentrations should be determined by the scientist.	
Observed Size	~ 30-35 kDa	

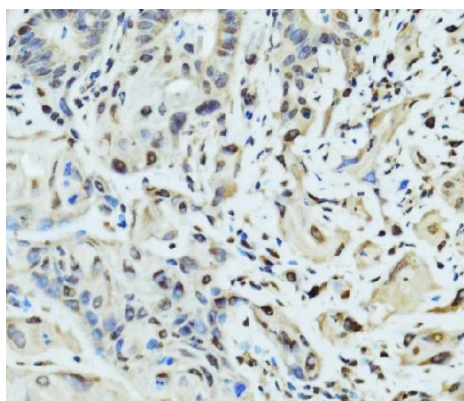
### Properties

Form	Liquid
Purification	Affinity purification with immunogen.
Buffer	0.9% NaCl, 0.2% Na <sub>2</sub> HPO <sub>4</sub> and 4% Trehalose.
Stabilizer	4% Trehalose
Concentration	0.5 mg/ml
Storage instruction	For continuous use, store undiluted antibody at 2-8°C for up to a week. For long-term storage, aliquot and store at -20°C or below. Storage in frost free freezers is not recommended. Avoid repeated freeze/thaw cycles. Suggest spin the vial prior to opening. The antibody solution should be gently mixed before use.

## Bioinformation

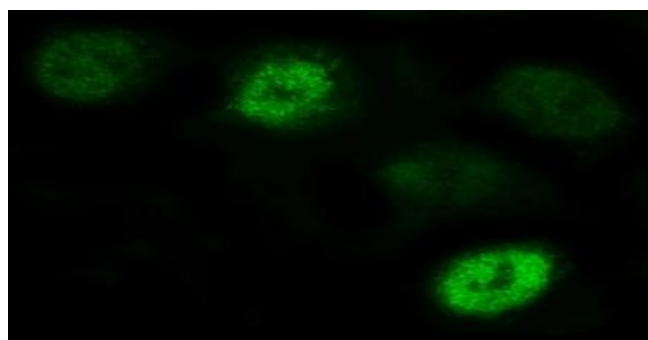
Gene Symbol	SYCP3
Gene Full Name	synaptonemal complex protein 3
Background	This gene encodes an essential structural component of the synaptonemal complex. This complex is involved in synapsis, recombination and segregation of meiotic chromosomes. Mutations in this gene are associated with azoospermia in males and susceptibility to pregnancy loss in females. Alternate splicing results in multiple transcript variants that encode the same protein. [provided by RefSeq, May 2010]
Function	Component of the transverse filaments of synaptonemal complexes (SCS), formed between homologous chromosomes during meiotic prophase. Has an essential meiotic function in spermatogenesis. May be important for testis development. Required for efficient phosphorylation of HORMAD1 and HORMAD2 (By similarity). [UniProt]
Calculated Mw	28 kDa
PTM	Phosphorylated. [UniProt]
Cellular Localization	Centromere; Chromosome; Nucleus

## Images



ARG43633 anti-SCP3 antibody IHC-P image

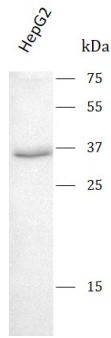
Immunohistochemistry: Human gall bladder adenosquamous carcinoma stained with ARG43633 anti-SCP3 antibody at 2 µg/ml dilution.



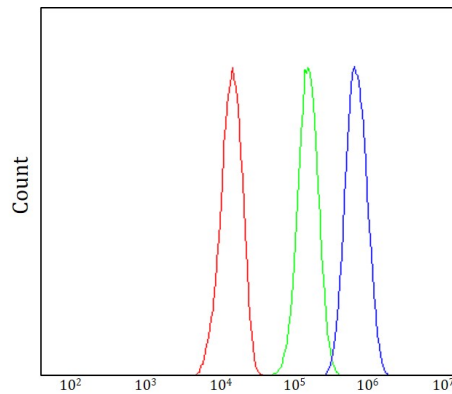
ARG43633 anti-SCP3 antibody ICC/IF image

Immunofluorescence: A549 stained with ARG43633 anti-SCP3 antibody at 5 µg/ml dilution.

#### ARG43633 anti-SCP3 antibody WB image



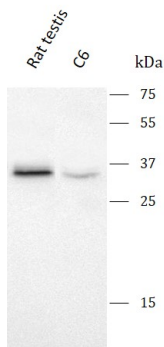
Western blot: HepG2 stained with ARG43633 anti-SCP3 antibody at 0.5  $\mu\text{g}/\text{mL}$  dilution.



#### ARG43633 anti-SCP3 antibody FACS image

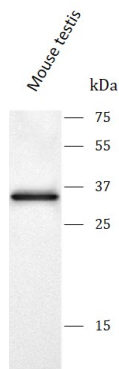
Flow Cytometry: JK stained with ARG43633 anti-SCP3 antibody at 1  $\mu\text{g} / 10^6$  cells dilution.

#### ARG43633 anti-SCP3 antibody WB image



Western blot: Rat testis and C6 stained with ARG43633 anti-SCP3 antibody at 0.5  $\mu\text{g}/\text{mL}$  dilution.

#### ARG43633 anti-SCP3 antibody WB image



Western blot: Mouse testis stained with ARG43633 anti-SCP3 antibody at 0.5  $\mu\text{g}/\text{mL}$  dilution.