

ARG43648 anti-Secretogranin II antibody

Package: 100 µl
Store at: -20°C

Summary

Product Description	Rabbit Polyclonal antibody recognizes Secretogranin II
Tested Reactivity	Hu, Rat
Tested Application	ICC/IF, WB
Host	Rabbit
Clonality	Polyclonal
Isotype	IgG
Target Name	Secretogranin II
Species	Human
Immunogen	Recombinant protein fragment corresponding to a.a. 30-320 of Human secretogranin II (SCG2).
Conjugation	Un-conjugated
Alternate Names	EM66; Secretogranin II; CHGC; SgII; SN; Secretogranin-2; Chromogranin-C

Application Instructions

Application table	Application	Dilution
	ICC/IF	1:50 - 1:200
	WB	1:500 - 1:2000
Application Note	* The dilutions indicate recommended starting dilutions and the optimal dilutions or concentrations should be determined by the scientist.	
Observed Size	~70 kDa	

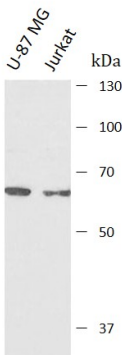
Properties

Form	Liquid
Purification	Affinity purified.
Buffer	PBS, 0.02% Sodium azide and 50% Glycerol.
Preservative	0.02% Sodium azide
Stabilizer	50% Glycerol
Storage instruction	For continuous use, store undiluted antibody at 2-8°C for up to a week. For long-term storage, aliquot and store at -20°C or below. Storage in frost free freezers is not recommended. Avoid repeated freeze/thaw cycles. Suggest spin the vial prior to opening. The antibody solution should be gently mixed before use.
Note	For laboratory research only, not for drug, diagnostic or other use.

Bioinformation

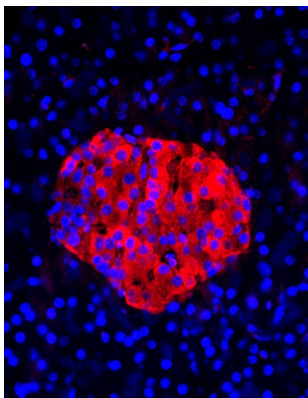
Gene Symbol	SCG2
Gene Full Name	secretogranin II
Background	The protein encoded by this gene is a member of the chromogranin/secretogranin family of neuroendocrine secretory proteins. Studies in rodents suggest that the full-length protein, secretogranin II, is involved in the packaging or sorting of peptide hormones and neuropeptides into secretory vesicles. The full-length protein is cleaved to produce the active peptide secretoneurin, which exerts chemotaxic effects on specific cell types, and EM66, whose function is unknown. [provided by RefSeq, Jul 2008]
Function	Secretogranin-2 is a neuroendocrine secretory granule protein, which is the precursor for biologically active peptides. [UniProt]
Research Area	Neuroscience antibody
Calculated Mw	71 kDa
PTM	O-glycosylated.
Cellular Localization	Centromere; Chromosome; Nucleus

Images



ARG43648 anti-Secretogranin II antibody WB image

Western blot: SW620 and Jurkat stained with ARG43648 anti-Secretogranin II antibody at 1:1000 dilution.



ARG43648 anti-Secretogranin II antibody ICC/IF image

Immunofluorescence: Rat pancreas cells stained with ARG43648 anti-Secretogranin II antibody at 1:100 dilution.