

ARG43661 anti-BCLAF1 / BTF antibody

Package: 100 µl
Store at: -20°C

Summary

Product Description	Rabbit Polyclonal antibody recognizes BCLAF1 / BTF
Tested Reactivity	Hu, Ms, Rat
Tested Application	WB
Host	Rabbit
Clonality	Polyclonal
Isotype	IgG
Target Name	BCLAF1 / BTF
Species	Human
Immunogen	Synthetic peptide within a.a. 550 to C-terminal of Human BCLAF1 / BTF.
Conjugation	Un-conjugated
Alternate Names	Bcl-2-associated transcription factor 1; Btf; BTF; bK211L9.1

Application Instructions

Application table	Application	Dilution
	WB	1:500 - 1:2000
Application Note	* The dilutions indicate recommended starting dilutions and the optimal dilutions or concentrations should be determined by the scientist.	
Observed Size	~150 kDa	

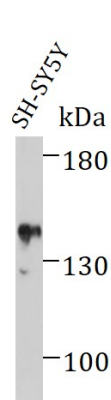
Properties

Form	Liquid
Purification	Affinity purified.
Buffer	PBS, 0.01% Thiomersal and 50% Glycerol.
Preservative	0.01% Thiomersal
Stabilizer	50% Glycerol
Concentration	Batch dependent
Storage instruction	For continuous use, store undiluted antibody at 2-8°C for up to a week. For long-term storage, aliquot and store at -20°C or below. Storage in frost free freezers is not recommended. Avoid repeated freeze/thaw cycles. Suggest spin the vial prior to opening. The antibody solution should be gently mixed before use.
Note	For laboratory research only, not for drug, diagnostic or other use.

Bioinformation

Gene Symbol	BCLAF1
Gene Full Name	BCL2-associated transcription factor 1
Background	This gene encodes a transcriptional repressor that interacts with several members of the BCL2 family of proteins. Overexpression of this protein induces apoptosis, which can be suppressed by co-expression of BCL2 proteins. The protein localizes to dot-like structures throughout the nucleus, and redistributes to a zone near the nuclear envelope in cells undergoing apoptosis. Multiple transcript variants encoding different isoforms have been found for this gene. [provided by RefSeq, Jul 2008]
Function	Death-promoting transcriptional repressor. May be involved in cyclin-D1/CCND1 mRNA stability through the SNARP complex which associates with both the 3'end of the CCND1 gene and its mRNA. [UniProt]
Calculated Mw	106 kDa
PTM	Citrullinated by PADI4. [UniProt]

Images



ARG43661 anti-BCLAF1 / BTF antibody WB image

Western blot: SH-SY5Y cells stained with ARG43661 anti-BCLAF1 / BTF antibody at 1:1000 dilution.