

ARG43666 anti-ATMIN antibody

Package: 100 µl
Store at: -20°C

Summary

Product Description	Rabbit Polyclonal antibody recognizes ATMIN
Tested Reactivity	Hu, Ms, Rat
Tested Application	ICC/IF, WB
Host	Rabbit
Clonality	Polyclonal
Isotype	IgG
Target Name	ATMIN
Species	Human
Immunogen	Recombinant fragment within a.a. 150-400 of Human ATMIN.
Conjugation	Un-conjugated
Alternate Names	ZNF822; ATM/ATR-substrate CHK2-interacting zinc finger protein; ATM interactor; Zinc finger protein 822; ASCIZ

Application Instructions

Predict Reactivity Note	Mouse, Rat						
Application table	<table> <tr> <th>Application</th><th>Dilution</th></tr> <tr> <td>ICC/IF</td><td>1:50 - 1:200</td></tr> <tr> <td>WB</td><td>1:1000 - 1:2000</td></tr> </table>	Application	Dilution	ICC/IF	1:50 - 1:200	WB	1:1000 - 1:2000
Application	Dilution						
ICC/IF	1:50 - 1:200						
WB	1:1000 - 1:2000						
Application Note	* The dilutions indicate recommended starting dilutions and the optimal dilutions or concentrations should be determined by the scientist.						

Properties

Form	Liquid
Purification	Affinity purified.
Buffer	PBS, 0.02% Sodium azide and 50% Glycerol.
Preservative	0.02% Sodium azide
Stabilizer	50% Glycerol
Concentration	Batch dependent
Storage instruction	For continuous use, store undiluted antibody at 2-8°C for up to a week. For long-term storage, aliquot and store at -20°C or below. Storage in frost free freezers is not recommended. Avoid repeated freeze/thaw cycles. Suggest spin the vial prior to opening. The antibody solution should be gently mixed before use.

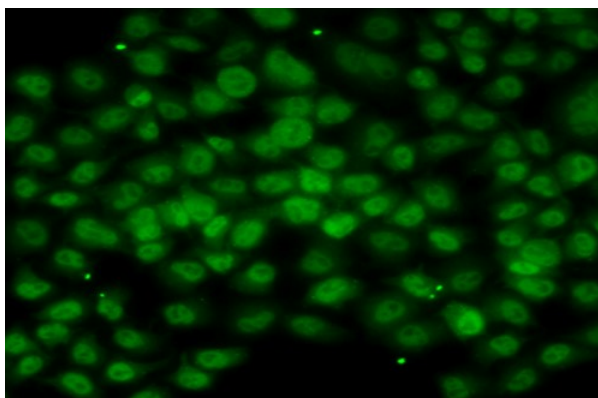
Note

For laboratory research only, not for drug, diagnostic or other use.

Bioinformation

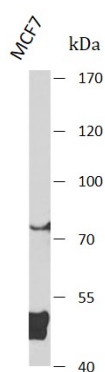
Gene Symbol	ATMIN
Gene Full Name	ATM interactor
Function	Transcription factor. Plays a crucial role in cell survival and RAD51 foci formation in response to methylating DNA damage. Involved in regulating the activity of ATM in the absence of DNA damage. May play a role in stabilizing ATM. Binds to the DYNLL1 promoter and activates its transcription. [UniProt]
Calculated Mw	88 kDa
Cellular Localization	Nucleus. Nuclear, in discrete foci during G1 phase. [UniProt]

Images



ARG43666 anti-ATMIN antibody ICC/IF image

Immunofluorescence: MCF7 stained with ARG43666 anti-ATMIN antibody at 1:100 dilution.



ARG43666 anti-ATMIN antibody WB image

Western blot: MCF7 stained with ARG43666 anti-ATMIN antibody at 1:1000 dilution.