

## ARG43695 anti-TCP1 beta antibody

Package: 100 µl  
Store at: -20°C

### Summary

Product Description	Rabbit Polyclonal antibody recognizes TCP1 beta
Tested Reactivity	Hu, Ms, Rat
Tested Application	ICC/IF, IHC-P, IP, WB
Host	Rabbit
Clonality	Polyclonal
Isotype	IgG
Target Name	TCP1 beta
Species	Human
Immunogen	Synthetic peptide corresponding to Human TCP1 beta.
Conjugation	Un-conjugated
Alternate Names	HEL-S-100n; CCT-beta; PRO1633; CCTB; 99D8.1; TCP-1-beta; T-complex protein 1 subunit beta

### Application Instructions

Application table	Application	Dilution
	ICC/IF	1:50 - 1:200
	IHC-P	1:50 - 1:100
	IP	1:10 - 1:25
	WB	1:500 - 1:1000
Application Note	* The dilutions indicate recommended starting dilutions and the optimal dilutions or concentrations should be determined by the scientist.	
Observed Size	57 kDa	

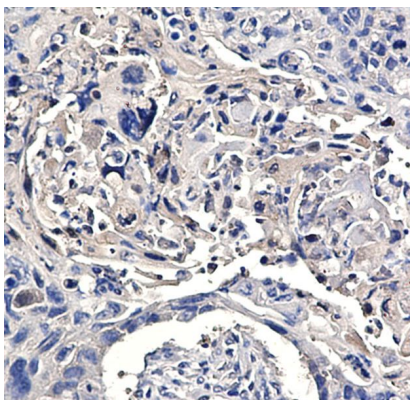
### Properties

Form	Liquid
Purification	Affinity purified.
Buffer	50 mM Tris-Glycine (pH 7.4), 150 mM NaCl, 0.01% Sodium azide, 40% Glycerol and 0.05% BSA.
Preservative	0.01% Sodium azide
Stabilizer	40% Glycerol and 0.05% BSA
Concentration	Batch dependent
Storage instruction	For continuous use, store undiluted antibody at 2-8°C for up to a week. For long-term storage, aliquot and store at -20°C. Storage in frost free freezers is not recommended. Avoid repeated freeze/thaw cycles. Suggest spin the vial prior to opening. The antibody solution should be gently mixed before use.

## Bioinformation

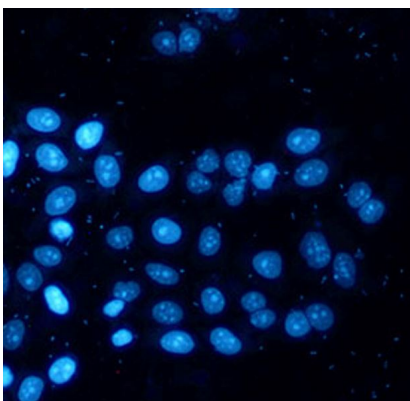
Gene Symbol	CCT2
Gene Full Name	chaperonin containing TCP1, subunit 2 (beta)
Background	The protein encoded by this gene is a molecular chaperone that is a member of the chaperonin containing TCP1 complex (CCT), also known as the TCP1 ring complex (TRiC). This complex consists of two identical stacked rings, each containing eight different proteins. Unfolded polypeptides enter the central cavity of the complex and are folded in an ATP-dependent manner. The complex folds various proteins, including actin and tubulin. Two transcript variants encoding different isoforms have been found for this gene. [provided by RefSeq, Nov 2010]
Function	Molecular chaperone; assists the folding of proteins upon ATP hydrolysis. As part of the BBS/CCT complex may play a role in the assembly of BBSome, a complex involved in ciliogenesis regulating transports vesicles to the cilia. Known to play a role, in vitro, in the folding of actin and tubulin. [UniProt]
Calculated Mw	57 kDa
PTM	Acetylation; Isopeptide bond; Phosphoprotein; Ubl conjugation
Cellular Localization	Cytoplasm. [UniProt]

## Images



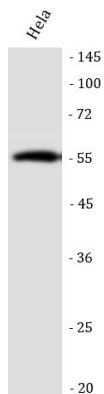
ARG43695 anti-TCP1 beta antibody IHC-P image

Immunohistochemistry: Human lung cancer stained with ARG43695 anti-TCP1 beta antibody.



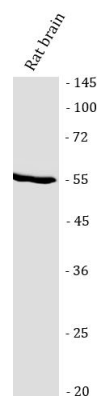
ARG43695 anti-TCP1 beta antibody ICC/IF image

Immunofluorescence: HeLa stained with ARG43695 anti-TCP1 beta antibody.



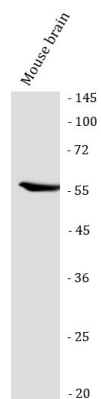
ARG43695 anti-TCP1 beta antibody WB image

Western blot: HeLa stained with ARG43695 anti-TCP1 beta antibody.



ARG43695 anti-TCP1 beta antibody WB image

Western blot: Rat brain stained with ARG43695 anti-TCP1 beta antibody.



ARG43695 anti-TCP1 beta antibody WB image

Western blot: Mouse brain stained with ARG43695 anti-TCP1 beta antibody.