

ARG43701 anti-AP2 gamma antibody

Package: 100 µl
Store at: -20°C

Summary

Product Description	Rabbit Polyclonal antibody recognizes AP2 gamma
Tested Reactivity	Hu
Tested Application	ICC/IF, IHC-P, WB
Host	Rabbit
Clonality	Polyclonal
Isotype	IgG
Target Name	AP2 gamma
Species	Human
Immunogen	Synthetic peptide corresponding to Human AP2 gamma.
Conjugation	Un-conjugated
Alternate Names	ERF1; TFAP2G; hAP-2g; Transcription factor ERF-1; Transcription factor AP-2 gamma; AP2-GAMMA; Activating enhancer-binding protein 2 gamma; AP2-gamma

Application Instructions

Application table	Application	Dilution
	ICC/IF	1:50 - 1:200
	IHC-P	1:50 - 1:100
	WB	1:500 - 1:1000
Application Note	* The dilutions indicate recommended starting dilutions and the optimal dilutions or concentrations should be determined by the scientist.	
Positive Control	HeLa	
Observed Size	~50 kDa	

Properties

Form	Liquid
Purification	Affinity purified.
Buffer	50 mM Tris-Glycine (pH 7.4), 150 mM NaCl, 0.01% Sodium azide, 40% Glycerol and 0.05% BSA.
Preservative	0.01% Sodium azide
Stabilizer	40% Glycerol and 0.05% BSA
Concentration	Batch dependent
Storage instruction	For continuous use, store undiluted antibody at 2-8°C for up to a week. For long-term storage, aliquot and store at -20°C or below. Storage in frost free freezers is not recommended. Avoid repeated

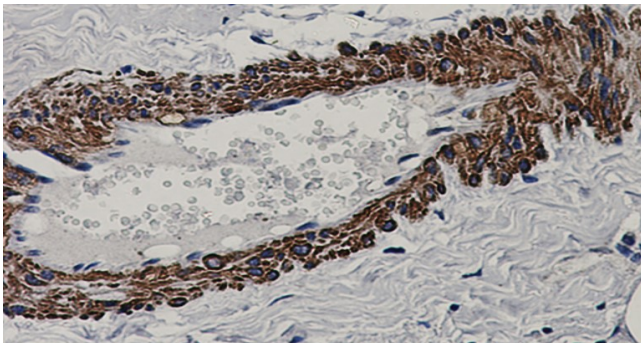
freeze/thaw cycles. Suggest spin the vial prior to opening. The antibody solution should be gently mixed before use.

Note For laboratory research only, not for drug, diagnostic or other use.

Bioinformation

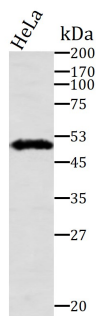
Gene Symbol	TFAP2C
Gene Full Name	transcription factor AP-2 gamma (activating enhancer binding protein 2 gamma)
Background	The protein encoded by this gene is a sequence-specific DNA-binding transcription factor involved in the activation of several developmental genes. The encoded protein can act as either a homodimer or heterodimer with other family members and is induced during retinoic acid-mediated differentiation. It plays a role in the development of the eyes, face, body wall, limbs, and neural tube. [provided by RefSeq, Jul 2008]
Function	Sequence-specific DNA-binding protein that interacts with inducible viral and cellular enhancer elements to regulate transcription of selected genes. AP-2 factors bind to the consensus sequence 5'-GCCNNNGGC-3' and activate genes involved in a large spectrum of important biological functions including proper eye, face, body wall, limb and neural tube development. They also suppress a number of genes including MCAM/MUC18, C/EBP alpha and MYC. Involved in the MTA1-mediated epigenetic regulation of ESR1 expression in breast cancer. [UniProt]
Calculated Mw	49 kDa
PTM	Sumoylated on Lys-10; which inhibits transcriptional activity. [UniProt]
Cellular Localization	Nucleus.

Images



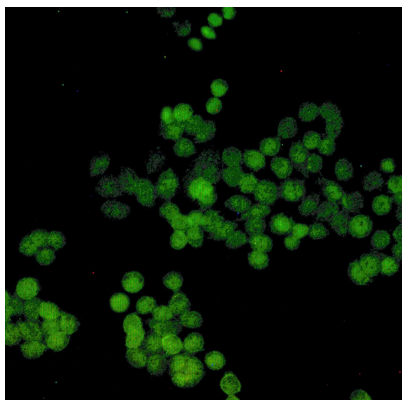
ARG43701 anti-AP2 gamma antibody IHC-P image

Immunohistochemistry: Formalin-fixed and paraffin-embedded Human breast cancer tissue stained with ARG43701 anti-AP2 gamma antibody at 1:100 dilution. Antigen Retrieval: Heat mediated was performed using sodium citrate buffer pH 6.0.



ARG43701 anti-AP2 gamma antibody WB image

Western blot: HeLa cells stained with ARG43701 anti-AP2 gamma antibody at 1:1000 dilution.



ARG43701 anti-AP2 gamma antibody ICC/IF image

Immunofluorescence: 100% Methanol fixed (RT, 10 min) HeLa cells stained with ARG43701 anti-AP2 gamma antibody at 1:150 dilution.