

## ARG43742 anti-TMEM176B / LR8 antibody

Package: 50 µl  
Store at: -20°C

### Summary

Product Description	Rabbit Polyclonal antibody recognizes TMEM176B / LR8
Tested Reactivity	Hu
Predict Reactivity	Cow, Dog, Hrs, Pig
Tested Application	WB
Host	Rabbit
Clonality	Polyclonal
Isotype	IgG
Target Name	TMEM176B / LR8
Species	Human
Immunogen	Synthetic peptide around the C-terminal region of Human TMEM176B / LR8. (within the following region: SLVSL GVGLR NLGQ SSQPL NEEGS EKRL GENS PPSPS REQTS TAIL)
Conjugation	Un-conjugated
Alternate Names	LR8; MS4B2; Transmembrane protein 176B; TMEM176B

### Application Instructions

Predict Reactivity Note	Predicted Homology Based On Immunogen Sequence: Cow: 85%; Dog: 85%; Horse: 85%; Pig: 85%;				
Application table	<table> <tr> <th>Application</th><th>Dilution</th></tr> <tr> <td>WB</td><td>1:500 - 1:2000</td></tr> </table>	Application	Dilution	WB	1:500 - 1:2000
Application	Dilution				
WB	1:500 - 1:2000				
Application Note	* The dilutions indicate recommended starting dilutions and the optimal dilutions or concentrations should be determined by the scientist.				
Positive Control	OVCAR-3				
Observed Size	~ 32 kDa				

### Properties

Form	Liquid
Purification	Affinity purified.
Buffer	PBS, 0.09% (w/v) Sodium azide and 2% Sucrose.
Preservative	0.09% (w/v) Sodium azide
Stabilizer	2% Sucrose
Concentration	Batch dependent: 0.5 - 1 mg/ml
Storage instruction	For continuous use, store undiluted antibody at 2-8°C for up to a week. For long-term storage, aliquot and store at -20°C or below. Storage in frost free freezers is not recommended. Avoid repeated

freeze/thaw cycles. Suggest spin the vial prior to opening. The antibody solution should be gently mixed before use.

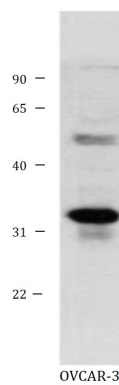
Note

For laboratory research only, not for drug, diagnostic or other use.

## Bioinformation

Gene Symbol	TMEM176B
Gene Full Name	transmembrane protein 176B
Background	Predicted to be involved in negative regulation of dendritic cell differentiation. Predicted to be located in nuclear membrane. Predicted to be integral component of membrane. [provided by Alliance of Genome Resources, Apr 2022]
Function	May play a role in the process of maturation of dendritic cells. Required for the development of cerebellar granule cells (By similarity). [UniProt]
Calculated Mw	25.3, 29 kDa
PTM	Phosphoprotein
Cellular Localization	Membrane, Nucleus. [UniProt]

## Images



ARG43742 anti-TMEM176B / LR8 antibody WB image

Western blot: OVCAR-3 cell lysate stained with ARG43742 anti-TMEM176B / LR8 antibody.