

ARG43746 anti-SRF antibody

Package: 50 µg
Store at: -20°C

Summary

Product Description	Rabbit Polyclonal antibody recognizes SRF
Tested Reactivity	Hu, Ms, Rat
Tested Application	ICC/IF, IHC-P, WB
Host	Rabbit
Clonality	Polyclonal
Isotype	IgG
Target Name	SRF
Species	Human
Immunogen	Recombinant protein corresponding to K154-E508 of Human SRF.
Conjugation	Un-conjugated
Alternate Names	SRF; MCM1; Serum response factor

Application Instructions

Application table	Application	Dilution
	ICC/IF	1:50 - 1:150
	IHC-P	1:100 - 1:250
	WB	1:1000 - 1:5000
Application Note	IHC-P: Antigen Retrieval: Heat mediation was performed in EDTA buffer (pH 8.0, epitope retrieval solution) for 20 min. * The dilutions indicate recommended starting dilutions and the optimal dilutions or concentrations should be determined by the scientist.	
Observed Size	~ 65-70 kDa	

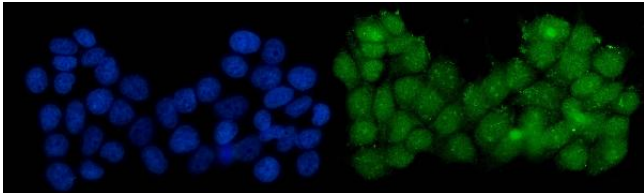
Properties

Form	Liquid
Purification	Affinity purification with immunogen.
Buffer	0.2% Na ₂ HPO ₄ , 0.9% NaCl and 4% Trehalose.
Stabilizer	4% Trehalose
Concentration	0.5 mg/ml
Storage instruction	For continuous use, store undiluted antibody at 2-8°C for up to a week. For long-term storage, aliquot and store at -20°C or below. Storage in frost free freezers is not recommended. Avoid repeated freeze/thaw cycles. Suggest spin the vial prior to opening. The antibody solution should be gently mixed before use.

Bioinformation

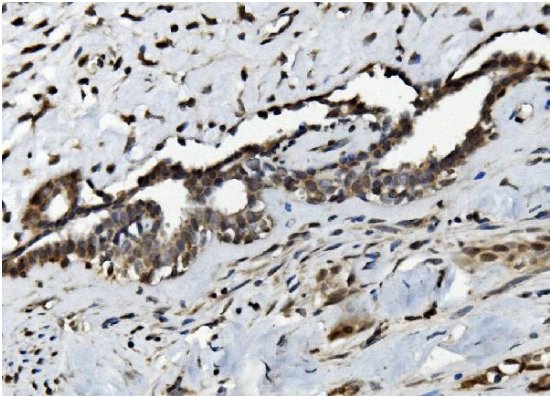
Gene Symbol	SRF
Gene Full Name	serum response factor
Background	This gene encodes a ubiquitous nuclear protein that stimulates both cell proliferation and differentiation. It is a member of the MADS (MCM1, Agamous, Deficiens, and SRF) box superfamily of transcription factors. This protein binds to the serum response element (SRE) in the promoter region of target genes. This protein regulates the activity of many immediate-early genes, for example c-fos, and thereby participates in cell cycle regulation, apoptosis, cell growth, and cell differentiation. This gene is the downstream target of many pathways; for example, the mitogen-activated protein kinase pathway (MAPK) that acts through the ternary complex factors (TCFs). [provided by RefSeq, Jul 2008]
Function	SRF is a transcription factor that binds to the serum response element (SRE), a short sequence of dyad symmetry located 300 bp to the 5' of the site of transcription initiation of some genes (such as FOS). Together with MRTFA transcription coactivator, controls expression of genes regulating the cytoskeleton during development, morphogenesis and cell migration. The SRF-MRTFA complex activity responds to Rho GTPase-induced changes in cellular globular actin (G-actin) concentration, thereby coupling cytoskeletal gene expression to cytoskeletal dynamics. Required for cardiac differentiation and maturation. [UniProt]
Research Area	Cell Biology and Cellular Response antibody; Controls and Markers antibody; Developmental Biology antibody; Gene Regulation antibody
Calculated Mw	52 kDa
PTM	Phosphorylated by PRKDC.
Cellular Localization	Nucleus

Images



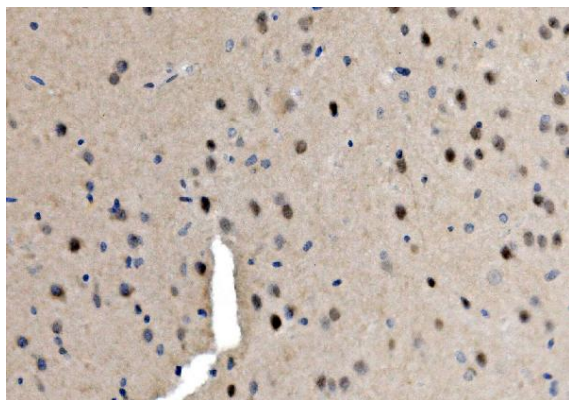
ARG43746 anti-SRF antibody ICC/IF image

Immunofluorescence: MCF-7 cells were blocked with 10% goat serum and then stained with ARG43746 anti-SRF antibody (green) at 5 µg/ml dilution, overnight at 4°C. DAPI (blue) for nuclear staining.



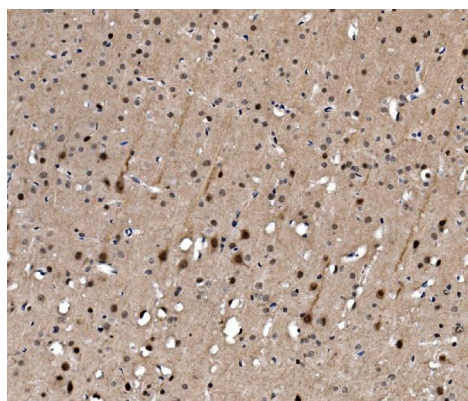
ARG43746 anti-SRF antibody IHC-P image

Immunohistochemistry: Paraffin-embedded Human breast cancer tissue. Antigen Retrieval: Heat mediation was performed in EDTA buffer (pH 8.0). The tissue section was blocked with 10% goat serum. The tissue section was then stained with ARG43746 anti-SRF antibody at 2 µg/ml dilution, overnight at 4°C.



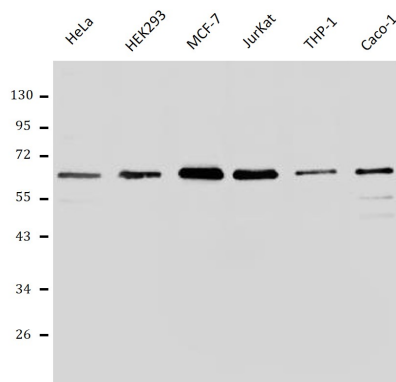
ARG43746 anti-SRF antibody IHC-P image

Immunohistochemistry: Paraffin-embedded Mouse brain tissue. Antigen Retrieval: Heat mediation was performed in EDTA buffer (pH 8.0). The tissue section was blocked with 10% goat serum. The tissue section was then stained with ARG43746 anti-SRF antibody at 2 µg/ml dilution, overnight at 4°C.



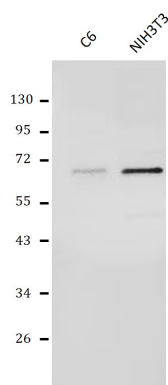
ARG43746 anti-SRF antibody IHC-P image

Immunohistochemistry: Paraffin-embedded Rat brain tissue. Antigen Retrieval: Heat mediation was performed in EDTA buffer (pH 8.0). The tissue section was blocked with 10% goat serum. The tissue section was then stained with ARG43746 anti-SRF antibody at 2 µg/ml dilution, overnight at 4°C.



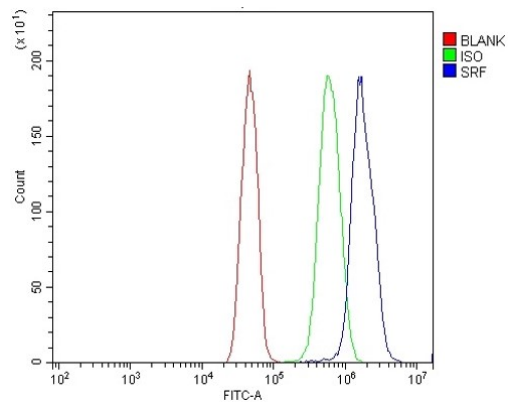
ARG43746 anti-SRF antibody WB image

Western blot: HeLa, HEK293, MCF-7, JurKat, THP-1 and Caco-1 cell lysates stained with ARG43746 anti-SRF antibody at 0.5 µg/mL dilution.



ARG43746 anti-SRF antibody WB image

Western blot: NIH3T3 and C6 cell lysates stained with ARG43746 anti-SRF antibody at 0.5 µg/mL dilution.



ARG43746 anti-SRF antibody FACS image

Flow Cytometry: U251 cells were blocked with 10% normal goat serum and then stained with ARG43746 anti-SRF antibody (blue) at $1 \mu\text{g}/10^6$ cells for 30 min at 20°C , followed by incubation with DyLight®488 labelled secondary antibody. Isotype control antibody (green) was rabbit IgG ($1 \mu\text{g}/10^6$ cells) used under the same conditions. Unlabelled sample (red) was also used as a control.