

ARG43821 anti-Collagen I, alpha 1 antibody

Package: 100 µl
Store at: -20°C

Summary

Product Description	Rabbit Polyclonal antibody recognizes Collagen I, alpha 1
Tested Reactivity	Hu
Tested Application	ICC/IF, IP, WB
Specificity	Human
Host	Rabbit
Clonality	Polyclonal
Isotype	IgG
Target Name	Collagen I
Species	Human
Immunogen	Synthetic peptide of human Collagen I.
Conjugation	Un-conjugated
Alternate Names	COL1A1; Collagen Type I Alpha 1 Chain; OI4; Collagen, Type I, Alpha 1; Collagen Alpha-1(I) Chain; Alpha-1 Type I Collagen; Collagen Of Skin, Tendon And Bone, Alpha-1 Chain; Collagen Alpha-1(I) Chain Preproprotein; Type I Procollagen Alpha 1 Chain; Collagen Alpha 1 Chain Type I; Pro-Alpha-1 Collagen Type 1; Alpha1(I) Procollagen; Type I Proalpha 1; EDSARTH1; CAFYD; EDSC; OI1; OI2; OI3

Application Instructions

Application table	Application	Dilution
	ICC/IF	1:50-1:200
	IP	1:20
	WB	1:500-1:1000
Application Note	* The dilutions indicate recommended starting dilutions and the optimal dilutions or concentrations should be determined by the scientist.	
Observed Size	139 kDa	

Properties

Form	Liquid
Purification	Affinity Purified
Buffer	Tris-Glycine, 0.15M NaCl, 40% Glycerol, 0.01% Sodium azide and 0.05% BSA
Preservative	0.01% Sodium azide
Stabilizer	40% Glycerol and 0.05% BSA
Storage instruction	For continuous use, store undiluted antibody at 2-8°C for up to a week. For long-term storage, aliquot and store at -20°C or below. Storage in frost free freezers is not recommended. Avoid repeated

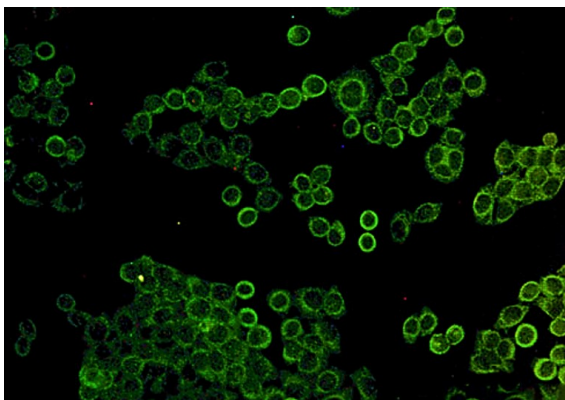
freeze/thaw cycles. Suggest spin the vial prior to opening. The antibody solution should be gently mixed before use.

Note For laboratory research only, not for drug, diagnostic or other use.

Bioinformation

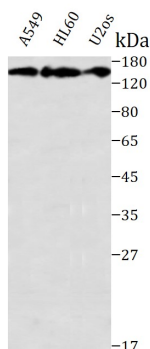
Gene Symbol	COL1A1
Gene Full Name	Collagen Type I Alpha 1 Chain
Background	This gene encodes the pro-alpha1 chains of type I collagen whose triple helix comprises two alpha1 chains and one alpha2 chain. Type I is a fibril-forming collagen found in most connective tissues and is abundant in bone, cornea, dermis and tendon. Mutations in this gene are associated with osteogenesis imperfecta types I-IV, Ehlers-Danlos syndrome type VIIA, Ehlers-Danlos syndrome Classical type, Caffey Disease and idiopathic osteoporosis. Reciprocal translocations between chromosomes 17 and 22, where this gene and the gene for platelet-derived growth factor beta are located, are associated with a particular type of skin tumor called dermatofibrosarcoma protuberans, resulting from unregulated expression of the growth factor. Two transcripts, resulting from the use of alternate polyadenylation signals, have been identified for this gene. [provided by R. Dagleish, Feb 2008]
Function	Type I collagen is a member of group I collagen (fibrillar forming collagen). [UniProt]
Calculated Mw	139 kDa
PTM	Disulfide bond, Glycoprotein, Hydroxylation, Phosphoprotein, Pyrrolidone carboxylic acid. [UniProt]
Cellular Localization	Extracellular matrix, Secreted. [UniProt]

Images



ARG43821 anti-Collagen I, alpha 1 antibody ICC/IF image

Immunofluorescence: HeLa cells stained with ARG43821 anti-Collagen I, alpha 1 antibody at 1:50 dilution.



ARG43821 anti-Collagen I, alpha 1 antibody WB image

Western blot: A549, HL-60 and U2OS cells stained with ARG43821 anti-Collagen I, alpha 1 antibody at 1:1000 dilution.