

ARG43829 anti-Ferritin Heavy Chain antibody

Package: 100 µl
Store at: -20°C

Summary

Product Description	Rabbit Polyclonal antibody recognizes Ferritin Heavy Chain
Tested Reactivity	Hu, Ms, Rat
Tested Application	ICC/IF, IHC-P, WB
Host	Rabbit
Clonality	Polyclonal
Isotype	IgG
Target Name	Ferritin Heavy Chain 1
Immunogen	Recombinant protein of Human Ferritin Heavy Chain (aa.1 - 183).
Epitope	MTTAS TSQVR QNYHQ DSEAA INRQI NLELY ASYVY LSMSY YFDRD DVALK NFAKY FLHQS HEERE HAEKL MKLQN QRGGR IFLQD IKKPD CDDWE SGLNA MECAL HLEKN VNQSL LELHK LATDK NDPHL CDFIE THYLN EQVKA IKELG DHVTN LRKMG APESG LAEYL FDKHT LGDSD NES
Conjugation	Un-conjugated
Alternate Names	Cell proliferation-inducing gene 15 protein; HFE5; FHC; PIG15; PLIF; Ferritin H subunit; FTH; Ferritin heavy chain; EC 1.16.3.1; FTHL6

Application Instructions

Application table	Application	Dilution
	ICC/IF	1:50 - 1:200
	IHC-P	1:50 - 1:200
	WB	1:1000 - 1:2000
Application Note	* The dilutions indicate recommended starting dilutions and the optimal dilutions or concentrations should be determined by the scientist.	

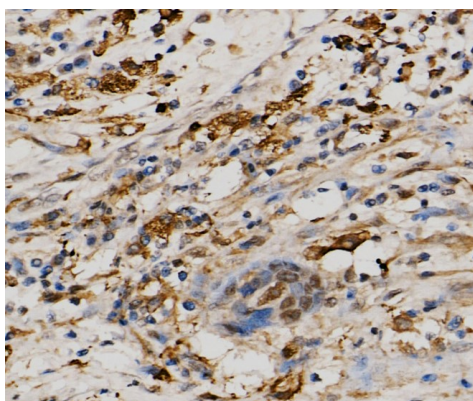
Properties

Form	Liquid
Purification	Affinity purified
Buffer	PBS (pH7.3) with 0.05% proclin300 and 50% glycerol.
Preservative	0.05% proclin300
Stabilizer	50% glycerol
Storage instruction	For continuous use, store undiluted antibody at 2-8°C for up to a week. For long-term storage, aliquot and store at -20°C. Storage in frost free freezers is not recommended. Avoid repeated freeze/thaw cycles. Suggest spin the vial prior to opening. The antibody solution should be gently mixed before use.

Bioinformation

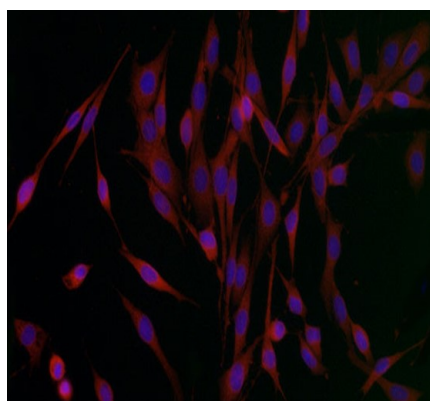
Gene Symbol	FTH1
Gene Full Name	ferritin, heavy polypeptide 1
Background	<p>This gene encodes the heavy subunit of ferritin, the major intracellular iron storage protein in prokaryotes and eukaryotes. It is composed of 24 subunits of the heavy and light ferritin chains. Variation in ferritin subunit composition may affect the rates of iron uptake and release in different tissues. A major function of ferritin is the storage of iron in a soluble and nontoxic state. Defects in ferritin proteins are associated with several neurodegenerative diseases. This gene has multiple pseudogenes. Several alternatively spliced transcript variants have been observed, but their biological validity has not been determined. [provided by RefSeq, Jul 2008]</p>
Function	<p>Stores iron in a soluble, non-toxic, readily available form. Important for iron homeostasis. Has ferroxidase activity. Iron is taken up in the ferrous form and deposited as ferric hydroxides after oxidation. Also plays a role in delivery of iron to cells. Mediates iron uptake in capsule cells of the developing kidney (By similarity). [UniProt]</p>

Images



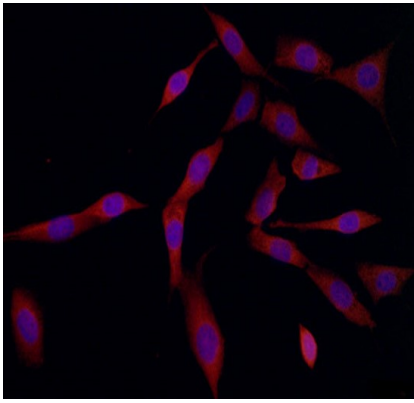
ARG43829 anti-Ferritin Heavy Chain antibody IHC-P image

Immunohistochemistry: Human esophageal cancer stained with ARG43829 anti-Ferritin Heavy Chain antibody.



ARG43829 anti-Ferritin Heavy Chain antibody ICC/IF image

Immunofluorescence: PC12 cell stained with ARG43829 anti-Ferritin Heavy Chain antibody.



ARG43829 anti-Ferritin Heavy Chain antibody ICC/IF image

Immunofluorescence: 3T3 cell stained with ARG43829 anti-Ferritin Heavy Chain antibody.