

ARG43837 anti-Ferritin Heavy Chain antibody [FTH-2081]

Package: 50 µg
Store at: -20°C

Summary

| | |
|---------------------|--|
| Product Description | Mouse Monoclonal antibody recognizes Ferritin Heavy Chain |
| Tested Reactivity | Hu |
| Tested Application | IHC-P, WB |
| Host | Mouse |
| Clonality | Monoclonal |
| Clone | FTH-2081 |
| Isotype | IgG2c |
| Target Name | Ferritin Heavy Chain 1 |
| Immunogen | Recombinant protein of Human Ferritin Heavy Chain (aa.58 - 180). |
| Conjugation | Un-conjugated |
| Alternate Names | Cell proliferation-inducing gene 15 protein; HFE5; FHC; PIG15; PLIF; Ferritin H subunit; FTH; Ferritin heavy chain; EC 1.16.3.1; FTHL6 |

Application Instructions

| Application table | Application | Dilution |
|-------------------|--|--------------|
| | IHC-P | 1:50-1:100 |
| | WB | 1:500-1:1000 |
| Application Note | * The dilutions indicate recommended starting dilutions and the optimal dilutions or concentrations should be determined by the scientist. | |

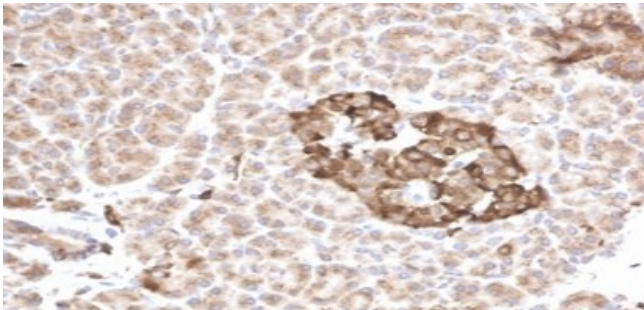
Properties

| | |
|---------------------|---|
| Form | Liquid |
| Purification | Affinity chromatography |
| Buffer | PBS with 0.05% Sodium azide and 0.1% BSA. |
| Preservative | 0.05% Sodium azide |
| Stabilizer | 0.1% BSA |
| Concentration | 200 µg/ml |
| Storage instruction | For continuous use, store undiluted antibody at 2-8°C for up to a week. For long-term storage, aliquot and store at -20°C. Storage in frost free freezers is not recommended. Avoid repeated freeze/thaw cycles. Suggest spin the vial prior to opening. The antibody solution should be gently mixed before use. |
| Note | For laboratory research only, not for drug, diagnostic or other use. |

Bioinformation

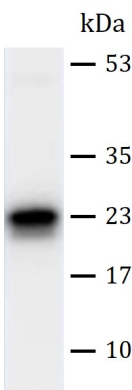
| | |
|----------------|--|
| Gene Symbol | FTH1 |
| Gene Full Name | ferritin, heavy polypeptide 1 |
| Background | This gene encodes the heavy subunit of ferritin, the major intracellular iron storage protein in prokaryotes and eukaryotes. It is composed of 24 subunits of the heavy and light ferritin chains. Variation in ferritin subunit composition may affect the rates of iron uptake and release in different tissues. A major function of ferritin is the storage of iron in a soluble and nontoxic state. Defects in ferritin proteins are associated with several neurodegenerative diseases. This gene has multiple pseudogenes. Several alternatively spliced transcript variants have been observed, but their biological validity has not been determined. [provided by RefSeq, Jul 2008] |
| Function | Stores iron in a soluble, non-toxic, readily available form. Important for iron homeostasis. Has ferroxidase activity. Iron is taken up in the ferrous form and deposited as ferric hydroxides after oxidation. Also plays a role in delivery of iron to cells. Mediates iron uptake in capsule cells of the developing kidney (By similarity). [UniProt] |

Images



ARG43837 anti-Ferritin Heavy Chain antibody IHC-P image

Immunohistochemistry: Human pancreas stained with ARG43837 anti-Ferritin Heavy Chain antibody.



ARG43837 anti-Ferritin Heavy Chain antibody WB image

Western blot: HeLa cell stained with ARG43837 anti-Ferritin Heavy Chain antibody.