

## ARG43839 anti-NRAMP1 / SLC11A1 Antibody

Package: 100 µl  
Store at: -20°C

### Summary

Product Description	Rabbit Polyclonal Antibody recognizes NRAMP1 / SLC11A1
Tested Reactivity	Hu
Tested Application	WB
Host	Rabbit
Clonality	Polyclonal
Isotype	IgG
Target Name	SLC11A1
Species	Human
Immunogen	Synthetic peptide between 250-276 of human NRAMP1/SLC11A1
Conjugation	Un-conjugated
Alternate Names	SLC11A1; Solute Carrier Family 11 Member 1; Natural Resistance-Associated Macrophage Protein 1; NRAMP1; NRAMP; LSH; Solute Carrier Family 11 (Proton-Coupled Divalent Metal Ion Transporter), Member 1; Leishmaniasis Resistance; NRAMP 1

### Application Instructions

Application table	Application	Dilution
	WB	1:1000
Application Note	* The dilutions indicate recommended starting dilutions and the optimal dilutions or concentrations should be determined by the scientist.	

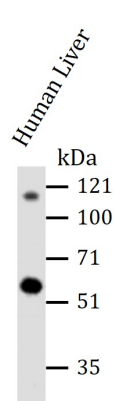
### Properties

Form	Liquid
Purification	Affinity purification.
Buffer	PBS with 0.09% sodium azide
Preservative	0.09% sodium azide
Storage instruction	For continuous use, store undiluted antibody at 2-8°C for up to a week. For long-term storage, aliquot and store at -20°C or below. Storage in frost free freezers is not recommended. Avoid repeated freeze/thaw cycles. Suggest spin the vial prior to opening. The antibody solution should be gently mixed before use.
Note	For laboratory research only, not for drug, diagnostic or other use.

### Bioinformation

Gene Symbol	6556
Gene Full Name	Solute Carrier Family 11 Member 1
Background	This gene is a member of the solute carrier family 11 (proton-coupled divalent metal ion transporters) family and encodes a multi-pass membrane protein. The protein functions as a divalent transition metal (iron and manganese) transporter involved in iron metabolism and host resistance to certain pathogens. Mutations in this gene have been associated with susceptibility to infectious diseases such as tuberculosis and leprosy, and inflammatory diseases such as rheumatoid arthritis and Crohn disease. Alternatively spliced variants that encode different protein isoforms have been described but the full-length nature of only one has been determined.
Function	Divalent transition metal (iron and manganese) transporter involved in iron metabolism and host resistance to certain pathogens. Macrophage-specific membrane transport function. Controls natural resistance to infection with intracellular parasites. Pathogen resistance involves sequestration of Fe2+ and Mn2+, cofactors of both prokaryotic and eukaryotic catalases and superoxide dismutases, not only to protect the macrophage against its own generation of reactive oxygen species, but to deny the cations to the pathogen for synthesis of its protective enzymes.
Calculated Mw	60 kDa
PTM	Glycoprotein
Cellular Localization	Membrane

Images



ARG43839 anti-NRAMP1/SLC11A1 Antibody WB image

Western blot: Human Liver stained with ARG43839 anti-NRAMP1/SLC11A1 Antibody antibody at 1:1000.