

ARG43852 anti-CD62L / L-Selectin antibody [DREG56] (APC-Cyanine 7)

Package: 100 tests
Store at: 4°C

Summary

Product Description	APC-Cyanine 7-conjugated Mouse Monoclonal antibody recognizes CD62L / L-Selectin
Tested Reactivity	Hu
Tested Application	FACS
Host	Mouse
Clonality	Monoclonal
Clone	DREG56
Isotype	IgG1
Target Name	CD62L / L-Selectin
Species	Human
Immunogen	PMA-activated Human peripheral blood leukocytes
Conjugation	APC-Cyanine 7
Alternate Names	SELL; Selectin L; LAM-1; PLNHR; CD62L; LYAM1; LSEL; LAM1; LNHR; Leukocyte-Endothelial Cell Adhesion Molecule 1; CD62 Antigen-Like Family Member L; Leukocyte Surface Antigen Leu-8; Lymphocyte Adhesion Molecule 1; Lymph Node Homing Receptor; L-Selectin; Gp90-MEL; Lyam-1; LECAM1; HLHRc; Leu-8; TQ1; Leukocyte Adhesion Molecule 1; Pln Homing Receptor; CD62L Antigen; LEU8

Application Instructions

Application table	Application	Dilution
	FACS	4 µl / 10 ⁶ cells
Application Note	* The dilutions indicate recommended starting dilutions and the optimal dilutions or concentrations should be determined by the scientist.	

Properties

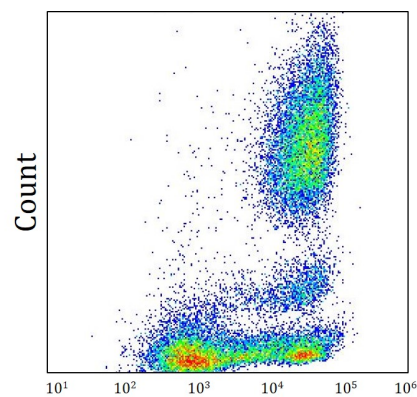
Form	Liquid
Purification	Protein-A affinity chromatography
Buffer	PBS (pH 7.4) and 15 mM Sodium azide
Preservative	15 mM Sodium azide
Storage instruction	Aliquot and store in the dark at 4°C. Keep protected from prolonged exposure to light. Do not freeze. Suggest spin the vial prior to opening. The antibody solution should be gently mixed before use.

Bioinformation

Gene Symbol	SELL
-------------	------

Gene Full Name	Selectin L
Background	This gene encodes a cell surface adhesion molecule that belongs to a family of adhesion/homing receptors. The encoded protein contains a C-type lectin-like domain, a calcium-binding epidermal growth factor-like domain, and two short complement-like repeats. The gene product is required for binding and subsequent rolling of leucocytes on endothelial cells, facilitating their migration into secondary lymphoid organs and inflammation sites. Single-nucleotide polymorphisms in this gene have been associated with various diseases including immunoglobulin A nephropathy. Alternatively spliced transcript variants have been found for this gene.
Function	Calcium-dependent lectin that mediates cell adhesion by binding to glycoproteins on neighboring cells.
Calculated Mw	42 kDa
PTM	Disulfide bond, Glycoprotein
Cellular Localization	Cell membrane

Images



ARG43852 anti-CD62L / L-Selectin antibody [DREG56] (APC-Cyanine 7) FACS image

Flow Cytometry: Human whole blood stained with ARG43852 anti-CD62L / L-Selectin antibody [DREG56] (APC-Cyanine 7) at 4 µg.