

## ARG43857 anti-TREM1 antibody [6B1]

Package: 100 µg  
Store at: 4°C

### Summary

Product Description	Mouse Monoclonal antibody recognizes TREM1.
Tested Reactivity	Hu
Tested Application	ELISA, FACS, WB
Host	Mouse
Clonality	Monoclonal
Clone	6B1
Isotype	IgG1
Target Name	TREM1
Species	Human
Immunogen	Human TREM1 recombinant protein.
Conjugation	Un-conjugated
Alternate Names	TREM1; Triggering Receptor Expressed On Myeloid Cells 1; TREM-1; CD354; Triggering Receptor Expressed On Monocytes 1; CD354 Antigen

### Application Instructions

Application table	Application	Dilution
	ELISA	Assay-dependent
	FACS	1-4 µg/ml
	WB	Assay-dependent
Application Note	* The dilutions indicate recommended starting dilutions and the optimal dilutions or concentrations should be determined by the scientist.	

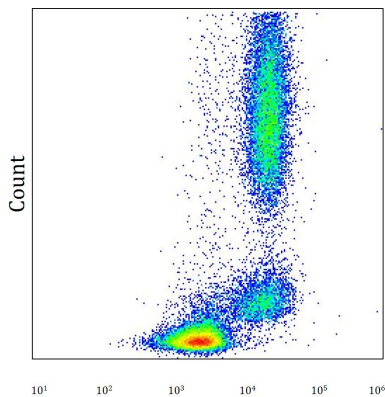
### Properties

Form	Liquid
Purification	Protein-A affinity chromatography
Buffer	PBS (pH 7.4) and 15 mM Sodium azide
Preservative	15 mM Sodium azide
Concentration	1 mg/ml
Storage instruction	Aliquot and store in the dark at 4°C. Keep protected from prolonged exposure to light. Do not freeze. Suggest spin the vial prior to opening. The antibody solution should be gently mixed before use.

Bioinformation

Gene Symbol	TREM1
Gene Full Name	Triggering Receptor Expressed On Myeloid Cells 1
Background	This gene encodes a receptor belonging to the Ig superfamily that is expressed on myeloid cells. This protein amplifies neutrophil and monocyte-mediated inflammatory responses triggered by bacterial and fungal infections by stimulating release of pro-inflammatory chemokines and cytokines, as well as increased surface expression of cell activation markers. Alternatively spliced transcript variants encoding different isoforms have been noted for this gene.
Function	Stimulates neutrophil and monocyte-mediated inflammatory responses. Triggers release of pro-inflammatory chemokines and cytokines, as well as increased surface expression of cell activation markers. Amplifier of inflammatory responses that are triggered by bacterial and fungal infections and is a crucial mediator of septic shock. [UniProt]
Calculated Mw	26 kDa
PTM	Disulfide bond; Glycoprotein
Cellular Localization	Cell membrane, Membrane, Secreted

Images



ARG43857 anti-TREM1 antibody [6B1] FACS image

Flow Cytometry: Human whole blood stained with ARG43857 anti-TREM1 antibody [6B1] at 1.67 µg/ml.