

ARG43859 anti-CD1d antibody [51.1] (PE)

Package: 100 tests
Store at: 4°C

Summary

Product Description	PE-conjugated Mouse Monoclonal antibody recognizes CD1d
Tested Reactivity	Hu
Tested Application	FACS
Host	Mouse
Clonality	Monoclonal
Clone	51.1
Isotype	IgG2b kappa
Target Name	CD1d
Species	Human
Immunogen	Human CD1d
Conjugation	PE
Alternate Names	CD1D; CD1d Molecule; Antigen-Presenting Glycoprotein CD1d; CD1D Antigen, D Polypeptide; CD1d Antigen; R3G1; HMC Class I Antigen-Like Glycoprotein CD1D; Differentiation Antigen CD1-Alpha-3; T-Cell Surface Glycoprotein CD1d; Thymocyte Antigen CD1D; CD1A; R3

Application Instructions

Application table	Application	Dilution
	FACS	1 : 10 or 10 µl / 10 ⁶ cells
Application Note	* The dilutions indicate recommended starting dilutions and the optimal dilutions or concentrations should be determined by the scientist.	

Properties

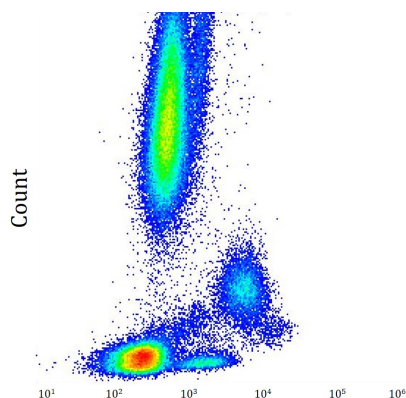
Form	Liquid
Purification	Protein-A affinity chromatography
Buffer	PBS (pH 7.4) and 15 mM Sodium azide
Preservative	15 mM Sodium azide
Storage instruction	Aliquot and store in the dark at 4°C. Keep protected from prolonged exposure to light. Do not freeze. Suggest spin the vial prior to opening. The antibody solution should be gently mixed before use.

Bioinformation

Gene Symbol	CD1D
Gene Full Name	CD1d Molecule

Background	This gene encodes a divergent member of the CD1 family of transmembrane glycoproteins, which are structurally related to the major histocompatibility complex (MHC) proteins and form heterodimers with beta-2-microglobulin. The CD1 proteins mediate the presentation of primarily lipid and glycolipid antigens of self or microbial origin to T cells. The human genome contains five CD1 family genes organized in a cluster on chromosome 1. The CD1 family members are thought to differ in their cellular localization and specificity for particular lipid ligands. The protein encoded by this gene localizes to late endosomes and lysosomes via a tyrosine-based motif in the cytoplasmic tail. Two transcript variants encoding different isoforms have been found for this gene. [provided by RefSeq, Jan 2016]
Function	Antigen-presenting protein that binds self and non-self glycolipids and presents them to T-cell receptors on natural killer T-cells.
Calculated Mw	38 kDa
PTM	Disulfide bond, Glycoprotein
Cellular Localization	Cell membrane, Endoplasmic reticulum, Endosome, Lysosome, Membrane

Images



ARG43859 anti-CD1d antibody [51.1] (PE) FACS image

Flow Cytometry: Human whole blood stained with ARG43859 anti-CD1d antibody [51.1] (PE) at 10 μ l / 100 μ l.