

ARG43860 anti-PTGFRN / CD315 antibody [1F11]

Package: 100 µg
Store at: 4°C

Summary

Product Description	Mouse Monoclonal antibody recognizes CD315
Tested Reactivity	Hu
Tested Application	FACS, IHC-Fr, IP, WB
Host	Mouse
Clonality	Monoclonal
Clone	1F11
Isotype	IgG1
Target Name	PTGFRN / CD315
Species	Human
Immunogen	HeLa
Conjugation	Un-conjugated
Alternate Names	PTGFRN; Prostaglandin F2 Receptor Inhibitor; CD9P-1; EWI-F; FPRP ; Prostaglandin F2 Receptor Negative Regulator; KIAA1436; SMAP-6; CD315; Prostaglandin F2-Alpha Receptor Regulatory Protein; Prostaglandin F2-Alpha Receptor-Associated Protein; Glu-Trp-Ile EWI Motif-Containing Protein F; CD9 Partner 1; FLJ11001; CD315 Antigen; CD9P1; EWIF

Application Instructions

Application table	Application	Dilution
	FACS	1-4 µg/ml
	IHC-Fr	Assay-dependent
	IP	Assay-dependent
	WB	Assay-dependent
Application Note	* The dilutions indicate recommended starting dilutions and the optimal dilutions or concentrations should be determined by the scientist.	

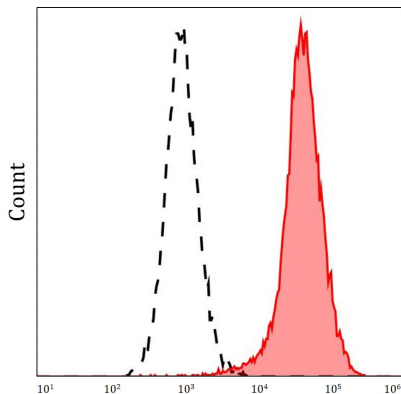
Properties

Form	Liquid
Purification	Protein-A affinity chromatography
Buffer	PBS (pH 7.4) and 15 mM Sodium azide
Preservative	15 mM Sodium azide
Concentration	1 mg/ml
Storage instruction	Aliquot and store in the dark at 4°C. Keep protected from prolonged exposure to light. Do not freeze. Suggest spin the vial prior to opening. The antibody solution should be gently mixed before use.

Bioinformatics

Gene Symbol	PTGFRN
Gene Full Name	Prostaglandin F2 Receptor Inhibitor
Background	Predicted to be involved in myoblast fusion involved in skeletal muscle regeneration. Predicted to act upstream of or within lipid droplet organization. Located in cell surface. [provided by Alliance of Genome Resources, Apr 2022]
Function	Inhibits the binding of prostaglandin F2-alpha (PGF2-alpha) to its specific FP receptor, by decreasing the receptor number rather than the affinity constant. Functional coupling with the prostaglandin F2-alpha receptor seems to occur (By similarity).
Calculated Mw	100 kDa
PTM	Disulfide bond, Glycoprotein, Phosphoprotein
Cellular Localization	Endoplasmic reticulum, Golgi apparatus, Membrane

Images



ARG43860 anti-PTGFRN / CD315 antibody [1F11] FACS image

Flow Cytometry: A431 stained with ARG43860 anti-PTGFRN / CD315 antibody [1F11] at 1.67 µg/ml.