

## ARG43864 anti-IgE antibody [4H10] (APC)

Package: 100 µg  
Store at: 4°C

### Summary

Product Description	APC-conjugated Mouse Monoclonal antibody recognize IgE.
Tested Reactivity	Hu
Tested Application	FACS
Host	Mouse
Clonality	Monoclonal
Clone	4H10
Isotype	IgG1
Target Name	IgE
Species	Human
Immunogen	Human IgE
Conjugation	APC
Alternate Names	IgE; Immunoglobulin E

### Application Instructions

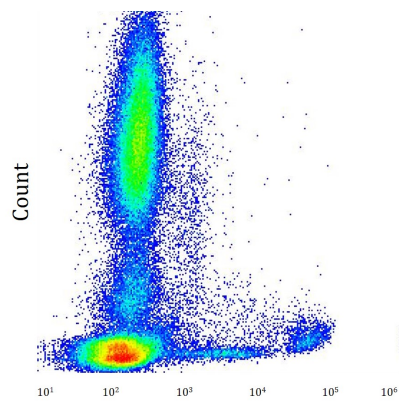
Application table	Application	Dilution
	FACS	0.5-3 µg/ml
Application Note	* The dilutions indicate recommended starting dilutions and the optimal dilutions or concentrations should be determined by the scientist.	

### Properties

Form	Liquid
Purification	Protein-A affinity chromatography
Buffer	PBS (pH 7.4) and 15 mM Sodium azide
Preservative	15 mM Sodium azide
Concentration	0.1 mg/ml
Storage instruction	Aliquot and store in the dark at 4°C. Keep protected from prolonged exposure to light. Do not freeze. Suggest spin the vial prior to opening. The antibody solution should be gently mixed before use.

### Bioinformation

Gene Symbol	IgE
Gene Full Name	Immunoglobulin E



ARG43864 anti-IgE antibody [4H10] (APC) FACS image

Flow Cytometry: Human whole blood stained with ARG43864 anti-IgE antibody [4H10] (APC) at 9  $\mu\text{g}$  / ml.