

ARG43869 anti-CD85g / ILT7 antibody [17G10.2] (FITC)

Package: 100 tests
Store at: 4°C

Summary

Product Description	FITC-conjugated Mouse Monoclonal antibody recognize CD85g / ILT7.
Tested Reactivity	Hu
Tested Application	FACS
Host	Mouse
Clonality	Monoclonal
Clone	17G10.2
Isotype	IgG1 kappa
Target Name	CD85g / ILT7
Species	Human
Conjugation	FITC
Alternate Names	LILRA4; Leukocyte Immunoglobulin Like Receptor A4; ILT7; CD85g; Leukocyte Immunoglobulin-Like Receptor, Subfamily A (With TM Domain), Member 4; Leukocyte Immunoglobulin-Like Receptor Subfamily A Member 4; CD85 Antigen-Like Family Member G; Immunoglobulin-Like Transcript 7; Leucocyte Ig-Like Receptor A4; Leukocyte Immunoglobulin-Like Receptor, Subfamily A (Without TM Domain), Member 4; CD85g Antigen; ILT-7

Application Instructions

Application table	<table> <tr> <th>Application</th><th>Dilution</th></tr> <tr> <td>FACS</td><td>1 : 25 or 4 µl / 10⁶</td></tr> </table>	Application	Dilution	FACS	1 : 25 or 4 µl / 10 ⁶
Application	Dilution				
FACS	1 : 25 or 4 µl / 10 ⁶				
Application Note	* The dilutions indicate recommended starting dilutions and the optimal dilutions or concentrations should be determined by the scientist.				

Properties

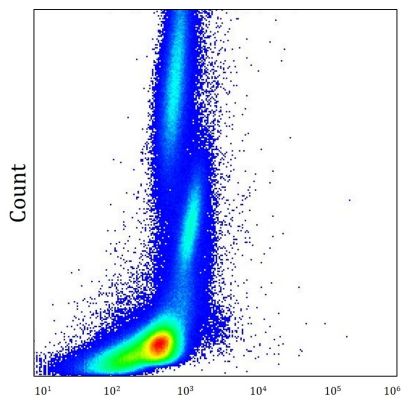
Form	Liquid
Purification	Purified
Buffer	PBS (pH 7.4) and 15 mM Sodium azide
Preservative	15 mM Sodium azide
Storage instruction	Aliquot and store in the dark at 4°C. Keep protected from prolonged exposure to light. Do not freeze. Suggest spin the vial prior to opening. The antibody solution should be gently mixed before use.

Bioinformation

Gene Symbol	LILRA4
-------------	--------

Gene Full Name	Leukocyte Immunoglobulin Like Receptor A4
Background	This gene encodes an immunoglobulin-like cell surface protein that is expressed predominantly on plasmacytoid dendritic cells (PDCs) and modulates the function of these cells in the immune response. Expression of this gene is downregulated by interleukin 3 (IL3). This gene is one of a cluster of highly related genes located at chromosomal region 19q13.4.
Function	Functions coreceptor to limit the innate immune responses to viral infections; signaling occurs via FCER1G
Calculated Mw	55 kDa
PTM	Disulfide bond, Glycoprotein, Nitration
Cellular Localization	Cell membrane

Images



ARG43869 anti-CD85g / ILT7 antibody [17G10.2] (FITC) FACS image

Flow Cytometry: Human whole blood stained withARG43869 anti-CD85g / ILT7 antibody [17G10.2] (FITC) at 1:25 dilution.