

## ARG43879 anti-RBP2 / CRBP2 antibody

Package: 50 µg  
Store at: -20°C

### Summary

Product Description	Rabbit Polyclonal antibody recognizes RBP2 / CRBP2
Tested Reactivity	Hu, Ms, Rat
Tested Application	ELISA, WB
Host	Rabbit
Clonality	Polyclonal
Isotype	IgG
Target Name	RBP2 / CRBP2
Species	Human
Immunogen	Human RBP2 / CRBP2 recombinant protein
Conjugation	Un-conjugated
Alternate Names	RBP2; Retinol Binding Protein 2 ; CRBP2; CRABP-II; CRBP2; RBPC2; Cellular Retinol-Binding Protein II; Retinol-Binding Protein 2; CRBP-II; Retinol-Binding Protein 2, Cellular; Retinol Binding Protein 2, Cellular

### Application Instructions

Application table	Application	Dilution
	ELISA	0.1-0.5 µg/ml
	WB	0.25-0.5 µg/ml
Application Note	* The dilutions indicate recommended starting dilutions and the optimal dilutions or concentrations should be determined by the scientist.	

### Properties

Form	Liquid
Purification	Affinity purified with Immunogen.
Buffer	0.9% NaCl, 0.2% Na2HPO4 and 4% Trehalose.
Stabilizer	4% Trehalose
Concentration	0.5 mg/ml
Storage instruction	For continuous use, store undiluted antibody at 2-8°C for up to a week. For long-term storage, aliquot and store at -20°C or below. Storage in frost free freezers is not recommended. Avoid repeated freeze/thaw cycles. Suggest spin the vial prior to opening. The antibody solution should be gently mixed before use.
Note	For laboratory research only, not for drug, diagnostic or other use.

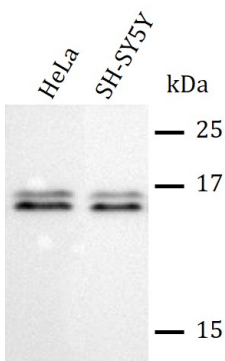
Bioinformation

Gene Symbol	RBP2
Gene Full Name	Retinol Binding Protein 2
Background	This gene encodes an abundant protein present in the small intestinal epithelium. It is thought to participate in the uptake and/or intracellular metabolism of vitamin A. Vitamin A is a fat-soluble vitamin necessary for growth, reproduction, differentiation of epithelial tissues, and vision. This protein may also modulate the supply of retinoic acid to the nuclei of endometrial cells during the menstrual cycle.
Function	Intracellular transport of retinol.
Calculated Mw	16 kDa
Cellular Localization	Cytoplasm

Images

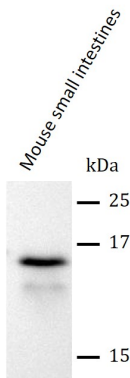
ARG43879 anti-RBP2 / CRBP2 antibody WB image

Western blot: Hela and SH-SY5Y stained with ARG43879 anti-RBP2 / CRBP2 antibody at 0.5 µg/mL dilution.



ARG43879 anti-RBP2 / CRBP2 antibody WB image

Western blot: Mouse small intestines stained with ARG43879 anti-RBP2 / CRBP2 antibody at 0.5 µg/mL dilution.



ARG43879 anti-RBP2 / CRBP2 antibody WB image

Western blot: Rat small intestines stained with ARG43879 anti-RBP2 / CRBP2 antibody at 0.5 µg/mL dilution.

