

ARG43890 anti-DLL4 antibody

Package: 50 µg
Store at: -20°C

Summary

Product Description	Rabbit Polyclonal antibody recognizes DLL4
Tested Reactivity	Hu, Ms, Rat
Tested Application	ELISA, FACS, WB
Host	Rabbit
Clonality	Polyclonal
Isotype	IgG
Target Name	DLL4
Species	Human
Immunogen	Human DLL4 recombinant protein
Conjugation	Un-conjugated
Alternate Names	DLL4; Delta Like Canonical Notch Ligand 4; Drosophila Delta Homolog 4; Delta-Like Protein 4; Delta4; Delta-Like 4 Homolog (Drosophila); Delta-Like 4 Homolog; Delta-Like 4 Protein; Notch Ligand Delta-2; Notch Ligand DLL4; Delta Ligand 4; Hdelta2; Delta4; AOS6

Application Instructions

Application table	Application	Dilution
	ELISA	0.1-0.5 µg/ml
	FACS	1-3 µg/1x10 ⁶ cells
	WB	0.25-0.5 µg/ml
Application Note	* The dilutions indicate recommended starting dilutions and the optimal dilutions or concentrations should be determined by the scientist.	

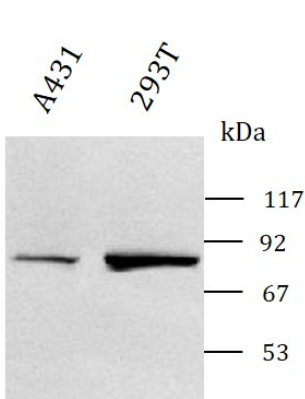
Properties

Form	Liquid
Purification	Affinity purified with Immunogen.
Buffer	0.9% NaCl, 0.2% Na ₂ HPO ₄ and 4% Trehalose.
Stabilizer	4% Trehalose
Concentration	0.5 mg/ml
Storage instruction	For continuous use, store undiluted antibody at 2-8°C for up to a week. For long-term storage, aliquot and store at -20°C or below. Storage in frost free freezers is not recommended. Avoid repeated freeze/thaw cycles. Suggest spin the vial prior to opening. The antibody solution should be gently mixed before use.
Note	For laboratory research only, not for drug, diagnostic or other use.

Bioinformation

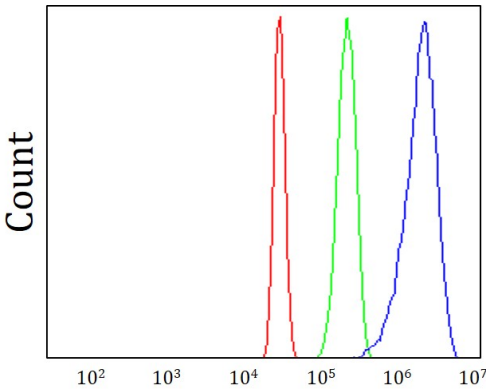
Gene Symbol	DLL4
Gene Full Name	Delta Like Canonical Notch Ligand 4
Background	This gene is a homolog of the Drosophila delta gene. The delta gene family encodes Notch ligands that are characterized by a DSL domain, EGF repeats, and a transmembrane domain.
Function	Essential for retinal progenitor proliferation. Required for suppressing rod fates in late retinal progenitors as well as for proper generation of other retinal cell types .
Calculated Mw	75 kDa
PTM	Disulfide bond; Glycoprotein
Cellular Localization	Cell membrane

Images



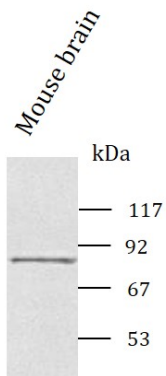
ARG43890 anti-DLL4 antibody WB image

Western blot: A431 and 293T stained with ARG43890 anti-DLL4 antibody at 0.5 µg/mL dilution.



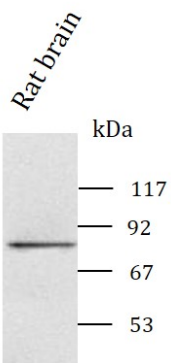
ARG43890 anti-DLL4 antibody FACS image

Flow Cytometry: HepG2 cells stained with ARG43890 anti-DLL4 antibody (blue) at 1 µg/1x10⁶ cells dilution.



ARG43890 anti-DLL4 antibody WB image

Western blot: Mouse brain stained with ARG43890 anti-DLL4 antibody at 0.5 $\mu\text{g/mL}$ dilution.



ARG43890 anti-DLL4 antibody WB image

Western blot: Rat brain stained with ARG43890 anti-DLL4 antibody at 0.5 $\mu\text{g/mL}$ dilution.