

ARG43917 anti-PPM1G / PP2C gamma antibody

Package: 50 µg
Store at: -20°C

Summary

Product Description	Rabbit Polyclonal antibody recognizes PPM1G / PP2C gamma
Tested Reactivity	Hu
Tested Application	ELISA, FACS, ICC/IF, IHC-P, WB
Host	Rabbit
Clonality	Polyclonal
Isotype	IgG
Target Name	PPM1G / PP2C gamma
Species	Human
Immunogen	Human PPM1G / PP2C gamma recombinant protein
Conjugation	Un-conjugated
Alternate Names	PPM1G; Protein Phosphatase, Mg ²⁺ /Mn ²⁺ Dependent 1G; PP2CG; Protein Phosphatase Magnesium-Dependent 1 Gamma; Protein Phosphatase 1G; Protein Phosphatase 1C; EC 3.1.3.16; PP2C-Gamma; PP2CGamma; Protein Phosphatase 1G (Formerly 2C), Magnesium-Dependent, Gamma Isoform; Protein Phosphatase, Mg ²⁺ /Mn ²⁺ Dependent, 1G; Protein Phosphatase 2C, Gamma Isoform; Protein Phosphatase 2C Isoform Gamma; PP2C, Gamma; PP2CGAMMA; PPP2CG; PPM1C

Application Instructions

Application table	Application	Dilution
	ELISA	0.1-0.5 µg/ml
	FACS	1-3 µg/1x10 ⁶ cells
	ICC/IF	5 µg/ml
	IHC-P	2-5 µg/ml
	WB	0.25-0.5 µg/ml
	Application Note	* The dilutions indicate recommended starting dilutions and the optimal dilutions or concentrations should be determined by the scientist.

Properties

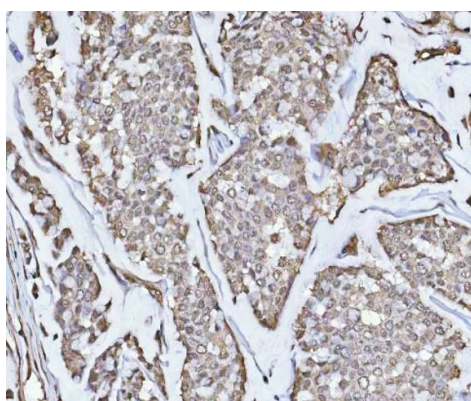
Form	Liquid
Purification	Affinity purified with Immunogen.
Buffer	0.9% NaCl, 0.2% Na ₂ HPO ₄ and 4% Trehalose.
Stabilizer	4% Trehalose
Concentration	0.5 mg/ml

Storage instruction	For continuous use, store undiluted antibody at 2-8°C for up to a week. For long-term storage, aliquot and store at -20°C or below. Storage in frost free freezers is not recommended. Avoid repeated freeze/thaw cycles. Suggest spin the vial prior to opening. The antibody solution should be gently mixed before use.
Note	For laboratory research only, not for drug, diagnostic or other use.

Bioinformation

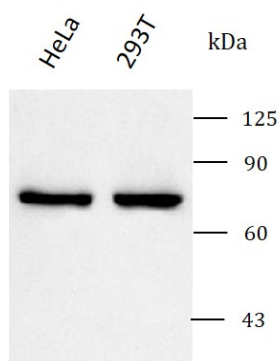
Gene Symbol	PPM1G
Gene Full Name	Protein Phosphatase, Mg ²⁺ /Mn ²⁺ Dependent 1G
Background	The protein encoded by this gene is a member of the PP2C family of Ser/Thr protein phosphatases. PP2C family members are known to be negative regulators of cell stress response pathways. This phosphatase is found to be responsible for the dephosphorylation of Pre-mRNA splicing factors, which is important for the formation of functional spliceosome. Studies of a similar gene in mice suggested a role of this phosphatase in regulating cell cycle progression.
Calculated Mw	59 kDa
PTM	Acetylation, Lipoprotein, Methylation, Myristate, Phosphoprotein
Cellular Localization	Cytoplasm, Membrane

Images



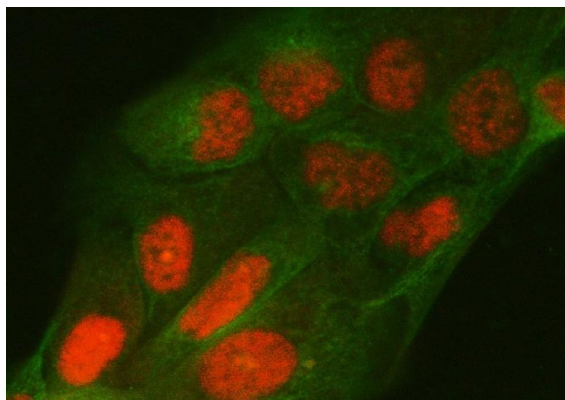
ARG43917 anti-PPM1G / PP2C gamma antibody IHC-P image

Immunohistochemistry: Human breast cancer stained with ARG43917 anti-PPM1G / PP2C gamma antibody at 2 µg/ml dilution.



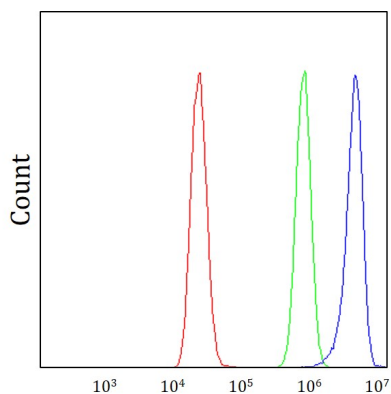
ARG43917 anti-PPM1G / PP2C gamma antibody WB image

Western blot: HeLa and 293T stained with ARG43917 anti-PPM1G / PP2C gamma antibody at 0.5 µg/mL dilution.



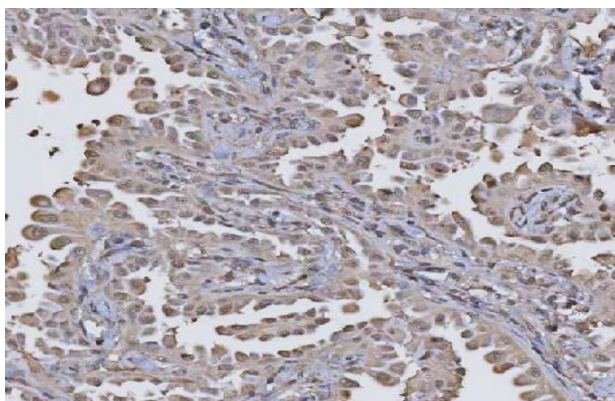
ARG43917 anti-PPM1G / PP2C gamma antibody ICC/IF image

Immunofluorescence: PC-3 cells stained with ARG43917 anti-PPM1G / PP2C gamma antibody at 5 $\mu\text{g}/\text{ml}$ dilution.



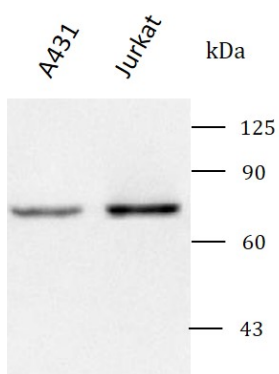
ARG43917 anti-PPM1G / PP2C gamma antibody FACS image

Flow Cytometry: MCF-7 cells stained with ARG43917 anti-PPM1G / PP2C gamma antibody (blue) at 1 $\mu\text{g}/1 \times 10^6$ cells dilution.



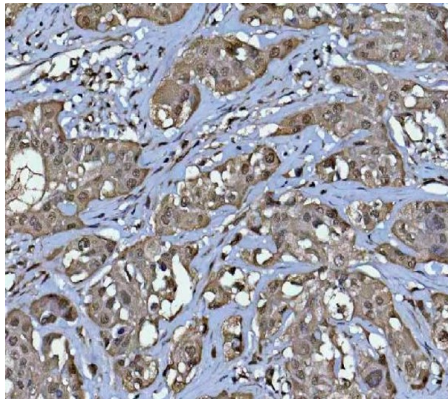
ARG43917 anti-PPM1G / PP2C gamma antibody IHC-P image

Immunohistochemistry: Human lung cancer stained with ARG43917 anti-PPM1G / PP2C gamma antibody at 2 $\mu\text{g}/\text{ml}$ dilution.



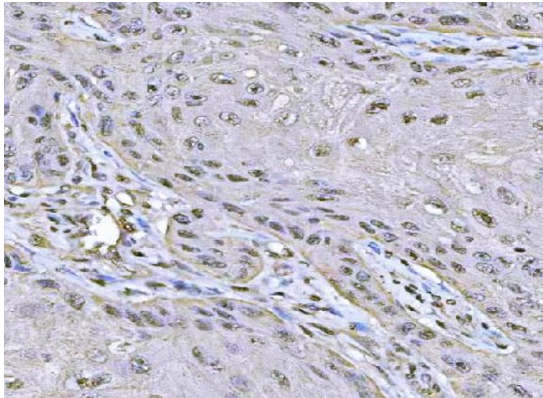
ARG43917 anti-PPM1G / PP2C gamma antibody WB image

Western blot: A431 and Jurkat stained with ARG43917 anti-PPM1G / PP2C gamma antibody at 0.5 $\mu\text{g}/\text{mL}$ dilution.



ARG43917 anti-PPM1G / PP2C gamma antibody IHC-P image

Immunohistochemistry: Human lymphoma cancer stained with ARG43917 anti-PPM1G / PP2C gamma antibody at 2 µg/ml dilution.



ARG43917 anti-PPM1G / PP2C gamma antibody IHC-P image

Immunohistochemistry: Human skin squamous carcinoma stained with ARG43917 anti-PPM1G / PP2C gamma antibody at 2 µg/ml dilution.
