

## ARG43922 anti-RAGE antibody

Package: 50 µg  
Store at: -20°C

### Summary

Product Description	Rabbit Polyclonal antibody recognizes RAGE
Tested Reactivity	Ms, Rat
Tested Application	WB
Host	Rabbit
Clonality	Polyclonal
Isotype	IgG
Target Name	RAGE
Species	Mouse
Immunogen	Mouse RAGE recombinant protein
Conjugation	Un-conjugated
Alternate Names	AGER; Advanced Glycosylation End-Product Specific Receptor; RAGE; SCAR1; SRAGE; Advanced Glycosylation End Product-Specific Receptor; Receptor For Advanced Glycation End-Products; Receptor For Advanced Glycosylation End Products

### Application Instructions

Application table	Application	Dilution
	WB	0.1-0.25 µg/ml
Application Note	* The dilutions indicate recommended starting dilutions and the optimal dilutions or concentrations should be determined by the scientist.	

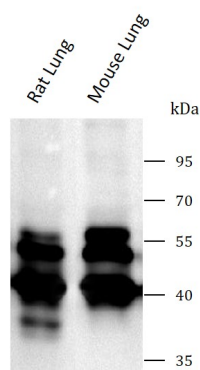
### Properties

Form	Liquid
Purification	Affinity purified with Immunogen.
Buffer	0.9% NaCl, 0.2% Na <sub>2</sub> HPO <sub>4</sub> and 4% Trehalose.
Stabilizer	4% Trehalose
Concentration	0.5 mg/ml
Storage instruction	For continuous use, store undiluted antibody at 2-8°C for up to a week. For long-term storage, aliquot and store at -20°C or below. Storage in frost free freezers is not recommended. Avoid repeated freeze/thaw cycles. Suggest spin the vial prior to opening. The antibody solution should be gently mixed before use.
Note	For laboratory research only, not for drug, diagnostic or other use.

### Bioinformation

Gene Symbol	AGER
Gene Full Name	Advanced Glycosylation End-Product Specific Receptor
Background	The advanced glycosylation end product (AGE) receptor encoded by this gene is a member of the immunoglobulin superfamily of cell surface receptors. It is a multiligand receptor, and besides AGE, interacts with other molecules implicated in homeostasis, development, and inflammation, and certain diseases, such as diabetes and Alzheimer's disease. Many alternatively spliced transcript variants encoding different isoforms, as well as non-protein-coding variants, have been described for this gene.
Function	Cell surface pattern recognition receptor that senses endogenous stress signals with a broad ligand repertoire including advanced glycation end products, S100 proteins, high-mobility group box 1 protein/HMGB1, amyloid beta/APP oligomers, nucleic acids, phospholipids and glycosaminoglycans.
Calculated Mw	43 kDa
PTM	Disulfide bond, Glycoprotein, Phosphoprotein, Ubl conjugation
Cellular Localization	Cell membrane, Membrane, Secreted

## Images



ARG43922 anti-RAGE antibody WB image

Western blot: Rat lung and Mouse lung stained with ARG43922 anti-RAGE antibody at 0.5 µg/mL dilution.