

## ARG43925 anti-Bcl 11B / CtIP2 antibody

Package: 50 µg  
Store at: -20°C

### Summary

Product Description	Rabbit Polyclonal antibody recognizes Bcl 11B / CtIP2
Tested Reactivity	Hu, Rat
Tested Application	FACS, ICC/IF, IHC-P, WB
Host	Rabbit
Clonality	Polyclonal
Isotype	IgG
Target Name	Bcl 11B / CtIP2
Species	Human
Immunogen	Human Bcl 11B / CtIP2 recombinant protein
Conjugation	Un-conjugated
Alternate Names	CL11B; BCL11 Transcription Factor B; CTIP2; BAF Chromatin Remodeling Complex Subunit BCL11B; HRIT1-Alpha; SMARCM2; CTIP-2; Radiation-Induced Tumor Suppressor Gene 1 Protein; B-Cell CLL/Lymphoma 11B (Zinc Finger Protein); BCL11B, BAF Complex Component; COUP-TF-Interacting Protein 2; B-Cell Lymphoma/Leukemia 11B; B Cell CLL/Lymphoma 11B; ZNF856B; BCL-11B; HRIT1; RIT1; B-Cell CLL/Lymphoma 11B/T-Cell Receptor Delta Constant Region Fusion Protein; Zinc Finger Protein HRIT1 Alpha; B-Cell Lymphoma/Leukaemia 11B; B-Cell CLL/Lymphoma 11B; BCL11B/TRDC Fusion; ATL1-Alpha; ATL1-Delta; ATL1-Gamma; ATL1-Beta; IDDFSTA; IMD49; ATL1

### Application Instructions

Application table	Application	Dilution
	FACS	1-3 µg/1x10 <sup>6</sup> cells
	ICC/IF	5 µg/ml
	IHC-P	2-5 µg/ml
	WB	0.1-0.25 µg/ml
Application Note	* The dilutions indicate recommended starting dilutions and the optimal dilutions or concentrations should be determined by the scientist.	

### Properties

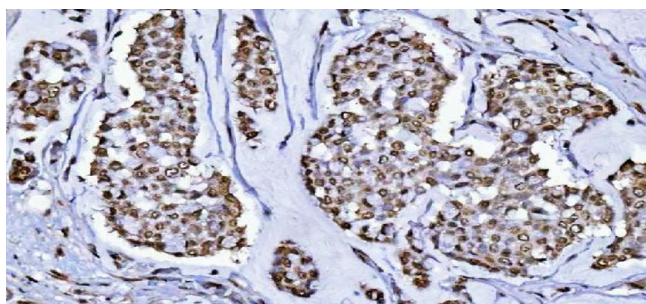
Form	Liquid
Purification	Affinity purified with Immunogen.
Buffer	0.9% NaCl, 0.2% Na <sub>2</sub> HPO <sub>4</sub> and 4% Trehalose.
Stabilizer	4% Trehalose
Concentration	0.5 mg/ml

Storage instruction	For continuous use, store undiluted antibody at 2-8°C for up to a week. For long-term storage, aliquot and store at -20°C or below. Storage in frost free freezers is not recommended. Avoid repeated freeze/thaw cycles. Suggest spin the vial prior to opening. The antibody solution should be gently mixed before use.
Note	For laboratory research only, not for drug, diagnostic or other use.

## Bioinformation

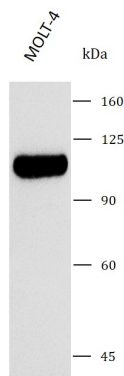
Gene Symbol	BCL11B
Gene Full Name	BCL11 Transcription Factor B
Background	This gene encodes a C2H2-type zinc finger protein and is closely related to BCL11A, a gene whose translocation may be associated with B-cell malignancies. Although the specific function of this gene has not been determined, the encoded protein is known to be a transcriptional repressor, and is regulated by the NURD nucleosome remodeling and histone deacetylase complex. Four alternatively spliced transcript variants encoding distinct isoforms have been found for this gene.
Function	Key regulator of both differentiation and survival of T-lymphocytes during thymocyte development in mammals. Essential in controlling the responsiveness of hematopoietic stem cells to chemotactic signals by modulating the expression of the receptors CCR7 and CCR9, which direct the movement of progenitor cells from the bone marrow to the thymus.
Calculated Mw	96 kDa
PTM	Acetylation, Isopeptide bond, Methylation, Phosphoprotein, Ubl conjugation
Cellular Localization	Nucleus

## Images



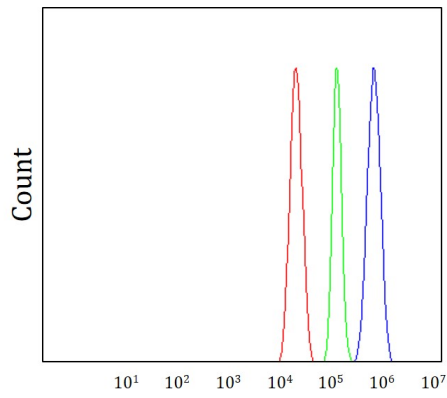
ARG43925 anti-Bcl 11B / Ctip2 antibody IHC-P image

Immunohistochemistry: Human breast cancer stained with ARG43925 anti-Bcl 11B / Ctip2 antibody at 2 µg/ml dilution.



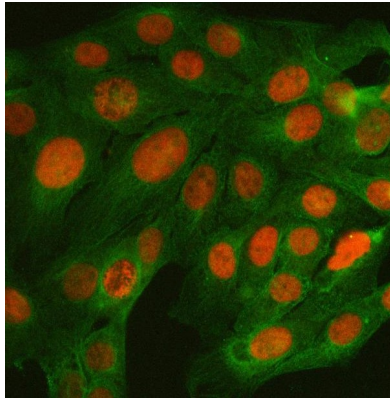
ARG43925 anti-Bcl 11B / Ctip2 antibody WB image

Western blot: MOLT-4 stained with ARG43925 anti-Bcl 11B / Ctip2 antibody at 0.5 µg/mL dilution.



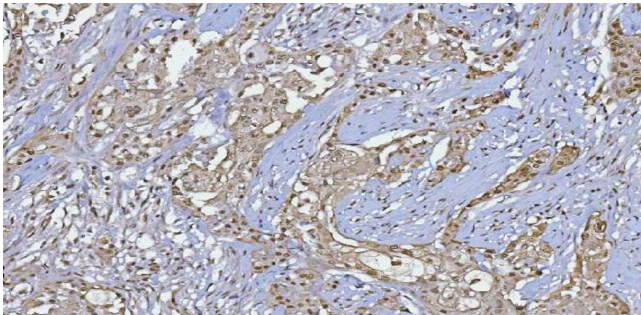
ARG43925 anti-Bcl 11B / Ctip2 antibody FACS image

Flow Cytometry: C6 cells stained with ARG43925 anti-Bcl 11B / Ctip2 antibody (blue) at 1 µg/1x10<sup>6</sup> cells dilution.



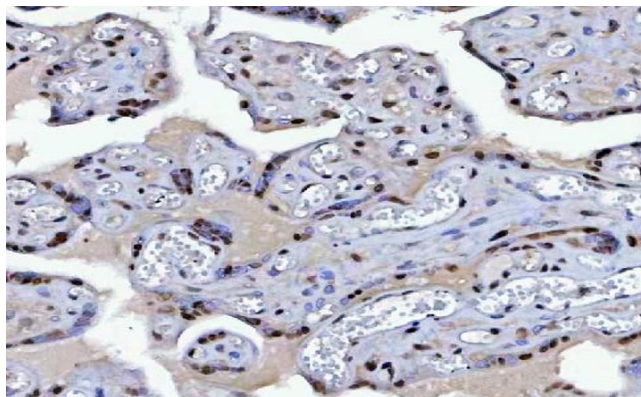
ARG43925 anti-Bcl 11B / Ctip2 antibody ICC/IF image

Immunofluorescence: U2OS cells stained with ARG43925 anti-Bcl 11B / Ctip2 antibody at 5 µg/ml dilution.



ARG43925 anti-Bcl 11B / Ctip2 antibody IHC-P image

Immunohistochemistry: Human lymph node metastasis carcinoma stained with ARG43925 anti-Bcl 11B / Ctip2 antibody at 2 µg/ml dilution.



ARG43925 anti-Bcl 11B / Ctip2 antibody IHC-P image

Immunohistochemistry: Human placenta stained with ARG43925 anti-Bcl 11B / Ctip2 antibody at 2 µg/ml dilution.