

ARG43942 anti-PLD6 antibody

Package: 50 µg
Store at: -20°C

Summary

Product Description	Rabbit Polyclonal antibody recognizes PLD6
Tested Reactivity	Hu
Tested Application	ELISA, FACS, IHC-P, WB
Host	Rabbit
Clonality	Polyclonal
Isotype	IgG
Target Name	PLD6
Species	Human
Immunogen	Human PLD6 recombinant protein
Conjugation	Un-conjugated
Alternate Names	PLD6; Phospholipase D Family Member 6; Phosphatidylcholine-Hydrolyzing Phospholipase D6; Mitochondrial Cardiolipin Hydrolase; Mitochondrial Phospholipase; Zucchini Endoribonuclease; Protein Zucchini Homolog; Choline Phosphatase 6; Phospholipase D6; MitoPLD; Zuc; Phospholipase D Family, Member 6; EC 3.1.4.-; PLD 6; ZUC

Application Instructions

Application table	Application	Dilution
	ELISA	0.1-0.5 µg/ml
	FACS	1-3 µg /1x10 ⁶ cells
	IHC-P	2-5 µg/ml
	WB	0.25-0.5 µg/ml
Application Note	* The dilutions indicate recommended starting dilutions and the optimal dilutions or concentrations should be determined by the scientist.	

Properties

Form	Liquid
Purification	Affinity purified with Immunogen.
Buffer	0.9% NaCl, 0.2% Na ₂ HPO ₄ and 4% Trehalose.
Stabilizer	4% Trehalose
Concentration	0.5 mg/ml
Storage instruction	For continuous use, store undiluted antibody at 2-8°C for up to a week. For long-term storage, aliquot and store at -20°C or below. Storage in frost free freezers is not recommended. Avoid repeated freeze/thaw cycles. Suggest spin the vial prior to opening. The antibody solution should be gently mixed

before use.

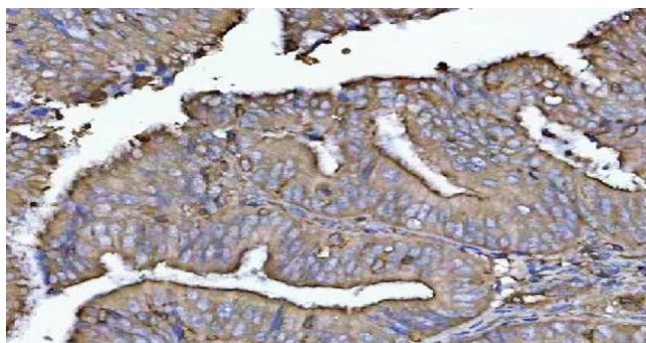
Note

For laboratory research only, not for drug, diagnostic or other use.

Bioinformation

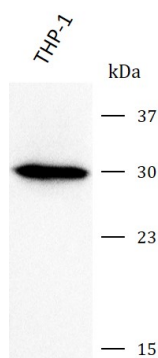
Gene Symbol	PLD6
Gene Full Name	Phospholipase D Family Member 6
Background	Enables cardiolipin hydrolase activity and protein homodimerization activity. Involved in mitochondrial fusion. Acts upstream of or within positive regulation of mitochondrial fusion. Located in mitochondrial outer membrane.
Function	Presents phospholipase and nuclease activities, depending on the different physiological conditions.
Calculated Mw	28 kDa
Cellular Localization	Golgi apparatus, Membrane, Mitochondrion, Mitochondrion outer membrane

Images



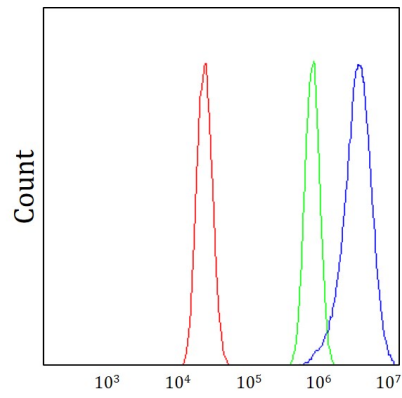
ARG43942 anti-PLD6 antibody IHC-P image

Immunohistochemistry: Human endometrial adenocarcinoma stained with ARG43942 anti-PLD6 antibody at 2 μ g/ml dilution.



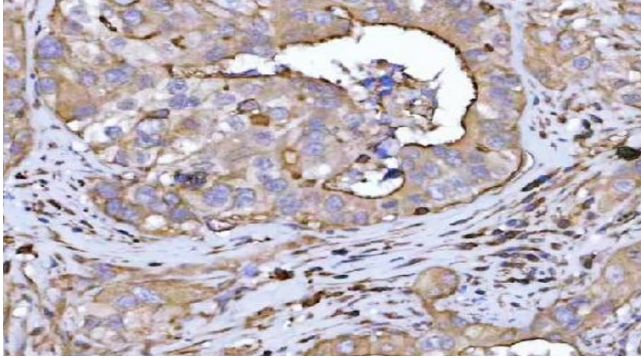
ARG43942 anti-PLD6 antibody WB image

Western blot: THP-1 stained with ARG43942 anti-PLD6 antibody at 0.5 μ g/mL dilution.



ARG43942 anti-PLD6 antibody FACS image

Flow Cytometry: MCF-7 cells stained with ARG43942 anti-PLD6 antibody (blue) at $1\text{ }\mu\text{g}/1\times 10^6$ cells dilution.



ARG43942 anti-PLD6 antibody IHC-P image

Immunohistochemistry: Human colon adenocarcinoma stained with ARG43942 anti-PLD6 antibody at $2\text{ }\mu\text{g}/\text{ml}$ dilution.