

## ARG43958 anti-Apolipoprotein E antibody

Package: 50 µg  
Store at: -20°C

### Summary

Product Description	Rabbit Polyclonal antibody recognizes Apolipoprotein E
Tested Reactivity	Hu
Tested Application	ELISA, FACS, ICC/IF, WB
Host	Rabbit
Clonality	Polyclonal
Isotype	IgG
Target Name	Apolipoprotein E
Species	Human
Immunogen	Human Apolipoprotein E recombinant protein
Conjugation	Un-conjugated
Alternate Names	APOE; Apolipoprotein E; AD2; Alzheimer Disease 2 (APOE*E4-Associated, Late Onset); Apolipoprotein E3; LDLQC5; APO-E; ApoE4; Apo-E; LPG

### Application Instructions

Application table	Application	Dilution
	ELISA	0.1-0.5 µg/ml
	FACS	1-3 µg /1x10 <sup>6</sup> cells
	ICC/IF	5 µg/ml
	WB	0.25-0.5 µg/ml
Application Note	* The dilutions indicate recommended starting dilutions and the optimal dilutions or concentrations should be determined by the scientist.	

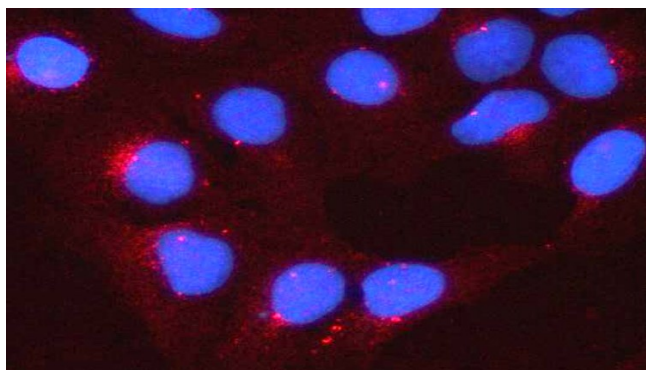
### Properties

Form	Liquid
Purification	Affinity purified with Immunogen.
Buffer	0.9% NaCl, 0.2% Na <sub>2</sub> HPO <sub>4</sub> and 4% Trehalose.
Stabilizer	4% Trehalose
Concentration	0.5 mg/ml
Storage instruction	For continuous use, store undiluted antibody at 2-8°C for up to a week. For long-term storage, aliquot and store at -20°C or below. Storage in frost free freezers is not recommended. Avoid repeated freeze/thaw cycles. Suggest spin the vial prior to opening. The antibody solution should be gently mixed before use.

## Bioinformation

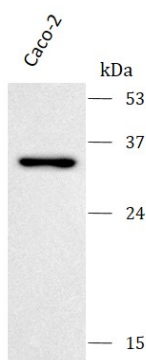
Gene Symbol	APOE
Gene Full Name	Apolipoprotein E
Background	The protein encoded by this gene is a major apoprotein of the chylomicron. It binds to a specific liver and peripheral cell receptor, and is essential for the normal catabolism of triglyceride-rich lipoprotein constituents. This gene maps to chromosome 19 in a cluster with the related apolipoprotein C1 and C2 genes. Mutations in this gene result in familial dysbetalipoproteinemia, or type III hyperlipoproteinemia (HLP III), in which increased plasma cholesterol and triglycerides are the consequence of impaired clearance of chylomicron and VLDL remnants.
Function	APOE is an apolipoprotein, a protein associating with lipid particles, that mainly functions in lipoprotein-mediated lipid transport between organs via the plasma and interstitial fluids.
Calculated Mw	36 kDa
PTM	Glycation, Glycoprotein, Oxidation, Phosphoprotein
Cellular Localization	Chylomicron, Endosome, Extracellular matrix, HDL, Secreted, VLDL

## Images



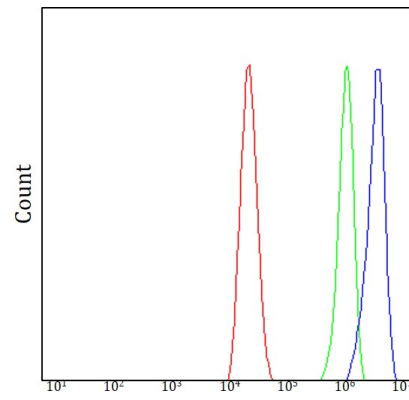
ARG43958 anti-Apolipoprotein E antibody ICC/IF image

Immunofluorescence: U2OS cells stained with ARG43958 anti-Apolipoprotein E antibody at 5 µg/ml dilution.



ARG43958 anti-Apolipoprotein E antibody WB image

Western blot: Caco-2 stained with ARG43958 anti-Apolipoprotein E antibody at 0.5 µg/mL dilution.



#### ARG43958 anti-Apolipoprotein E antibody FACS image

Flow Cytometry: Coca-2 cells stained with ARG43958 anti-Apolipoprotein E antibody (blue) at  $1\text{ }\mu\text{g}/1 \times 10^6$  cells dilution.