

ARG43965 anti-NDUFA2 antibody

Package: 50 µg
Store at: -20°C

Summary

Product Description	Rabbit Polyclonal antibody recognizes NDUFA2
Tested Reactivity	Ms
Predict Reactivity	Hu
Tested Application	ELISA, WB
Host	Rabbit
Clonality	Polyclonal
Isotype	IgG
Target Name	NDUFA2
Species	Human
Immunogen	Human NDUFA2 recombinant protein
Conjugation	Un-conjugated
Alternate Names	NDUFA2; NADH:Ubiquinone Oxidoreductase Subunit A2; B8; NADH Dehydrogenase [Ubiquinone] 1 Alpha Subcomplex Subunit 2; NADH Dehydrogenase (Ubiquinone) 1 Alpha Subcomplex, 2, 8kDa; Complex I B8 Subunit; NADH Dehydrogenase (Ubiquinone) 1 Alpha Subcomplex, 2 (8kD, B8); NADH-Ubiquinone Oxidoreductase Subunit CI-B8; NADH-Ubiquinone Oxidoreductase B8 Subunit; Complex I-B8; MC1DN13; CI-B8; CD14; CIB8

Application Instructions

Application table	Application	Dilution
	ELISA	0.1-0.5 µg/ml
	WB	0.25-0.5 µg/ml
Application Note	* The dilutions indicate recommended starting dilutions and the optimal dilutions or concentrations should be determined by the scientist.	

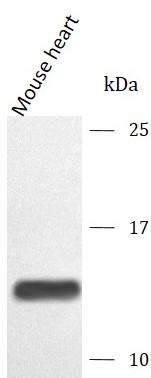
Properties

Form	Liquid
Purification	Affinity purified with Immunogen.
Buffer	0.9% NaCl, 0.2% Na2HPO4 and 4% Trehalose.
Stabilizer	4% Trehalose
Concentration	0.5 mg/ml
Storage instruction	For continuous use, store undiluted antibody at 2-8°C for up to a week. For long-term storage, aliquot and store at -20°C or below. Storage in frost free freezers is not recommended. Avoid repeated freeze/thaw cycles. Suggest spin the vial prior to opening. The antibody solution should be gently mixed before use.

Bioinformation

Gene Symbol	NDUFA2
Gene Full Name	NADH:Ubiquinone Oxidoreductase Subunit A2
Background	The encoded protein is a subunit of the hydrophobic protein fraction of the NADH:ubiquinone oxidoreductase (complex 1), the first enzyme complex in the electron transport chain located in the inner mitochondrial membrane, and may be involved in regulating complex I activity or its assembly via assistance in redox processes. Mutations in this gene are associated with Leigh syndrome, an early-onset progressive neurodegenerative disorder. Alternative splicing results in multiple transcript variants.
Function	Accessory subunit of the mitochondrial membrane respiratory chain NADH dehydrogenase (Complex I), that is believed not to be involved in catalysis. Complex I functions in the transfer of electrons from NADH to the respiratory chain. The immediate electron acceptor for the enzyme is believed to be ubiquinone.
Calculated Mw	11 kDa
PTM	Acetylation, Disulfide bond
Cellular Localization	Membrane, Mitochondrion, Mitochondrion inner membrane

Images



ARG43965 anti-NDUFA2 antibody WB image

Western blot: Mouse heart stained with ARG43965 anti-NDUFA2 antibody at 0.5 µg/mL dilution.