

ARG43988 anti-PSD2 antibody

Package: 50 µg
Store at: -20°C

Summary

Product Description	Rabbit Polyclonal antibody recognizes PSD2
Tested Reactivity	Hu
Tested Application	ELISA, FACS, WB
Host	Rabbit
Clonality	Polyclonal
Isotype	IgG
Target Name	PSD2
Species	Human
Immunogen	Human PSD2 recombinant protein
Conjugation	Un-conjugated
Alternate Names	PSD2; Pleckstrin And Sec7 Domain Containing 2; EFA6C; Exchange Factor For ADP-Ribosylation Factor Guanine Nucleotide Factor 6 C ; Pleckstrin Homology And SEC7 Domain-Containing Protein 2; PH And SEC7 Domain-Containing Protein 2; Exchange Factor For ARF6 C; DKFZp761B0514; EC 2.5.1.6; EC 3.6.1

Application Instructions

Application table	Application	Dilution
	ELISA	0.1-0.5 µg/ml
	FACS	1-3 µg/1x10 ⁶
	WB	0.25-0.5 µg/ml
Application Note	* The dilutions indicate recommended starting dilutions and the optimal dilutions or concentrations should be determined by the scientist.	

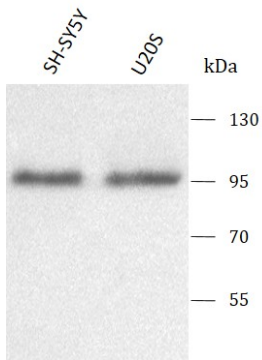
Properties

Form	Liquid
Purification	Affinity purified with Immunogen.
Buffer	0.9% NaCl, 0.2% Na ₂ HPO ₄ and 4% Trehalose.
Stabilizer	4% Trehalose
Concentration	0.5 mg/ml
Storage instruction	For continuous use, store undiluted antibody at 2-8°C for up to a week. For long-term storage, aliquot and store at -20°C or below. Storage in frost free freezers is not recommended. Avoid repeated freeze/thaw cycles. Suggest spin the vial prior to opening. The antibody solution should be gently mixed before use.
Note	For laboratory research only, not for drug, diagnostic or other use.

Bioinformation

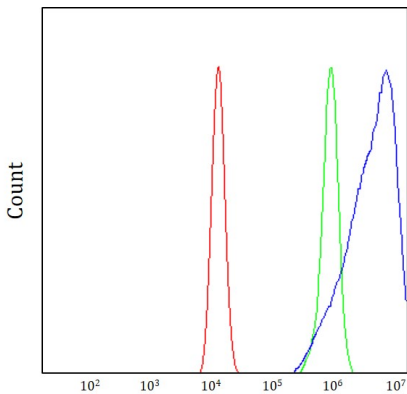
Gene Symbol	PSD2
Gene Full Name	Pleckstrin And Sec7 Domain Containing 2
Background	Predicted to enable guanyl-nucleotide exchange factor activity and phospholipid binding activity. Predicted to be involved in regulation of ARF protein signal transduction and regulation of catalytic activity. Predicted to be located in cleavage furrow and ruffle membrane. Predicted to be active in glutamatergic synapse and postsynapse.
Calculated Mw	85 kDa
PTM	Phosphoprotein
Cellular Localization	Cell membrane, Cell projection, Membrane

Images



ARG43988 anti-PSD2 antibody WB image

Western blot: SH-SY5Y and U251 stained with ARG43988 anti-PSD2 antibody at 0.5 µg/mL dilution.



ARG43988 anti-PSD2 antibody FACS image

Flow Cytometry: HEL cells stained with ARG43988 anti-PSD2 antibody (blue) at 1 µg/1x10⁶ cells dilution.