

ARG43991 anti-PSMB2 antibody

Package: 50 µg
Store at: -20°C

Summary

Product Description	Rabbit Polyclonal antibody recognizes PSMB2
Tested Reactivity	Hu
Tested Application	ELISA, FACS, ICC/IF, WB
Host	Rabbit
Clonality	Polyclonal
Isotype	IgG
Target Name	PSMB2
Species	Human
Immunogen	Human PSMB2 recombinant protein
Conjugation	Un-conjugated
Alternate Names	PSMB2; Macropain subunit C7-I; Proteasome subunit beta type-2; Multicatalytic endopeptidase complex subunit C7-I; HC7-I; Proteasome component C7-I; EC 3.4.25.1

Application Instructions

Application table	Application	Dilution
	ELISA	0.1-0.5 µg/ml
	FACS	1-3 µg/1x10 ⁶
	ICC/IF	5 µg/ml
	WB	0.25-0.5 µg/ml
Application Note	* The dilutions indicate recommended starting dilutions and the optimal dilutions or concentrations should be determined by the scientist.	

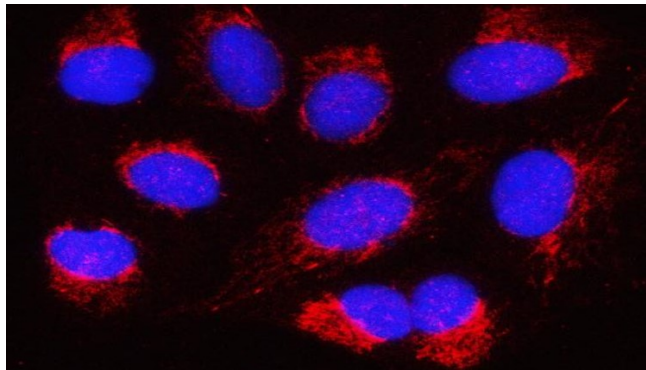
Properties

Form	Liquid
Purification	Affinity purified with Immunogen.
Buffer	0.9% NaCl, 0.2% Na ₂ HPO ₄ and 4% Trehalose.
Stabilizer	4% Trehalose
Concentration	0.5 mg/ml
Storage instruction	For continuous use, store undiluted antibody at 2-8°C for up to a week. For long-term storage, aliquot and store at -20°C or below. Storage in frost free freezers is not recommended. Avoid repeated freeze/thaw cycles. Suggest spin the vial prior to opening. The antibody solution should be gently mixed before use.

Bioinformation

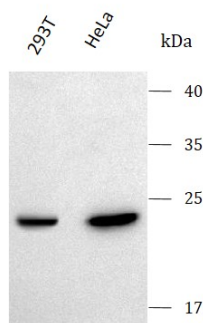
Gene Symbol	PSMB2
Gene Full Name	Proteasome 20S Subunit Beta 2
Background	<p>The proteasome is a multicatalytic proteinase complex with a highly ordered ring-shaped 20S core structure. The core structure is composed of 4 rings of 28 non-identical subunits; 2 rings are composed of 7 alpha subunits and 2 rings are composed of 7 beta subunits. Proteasomes are distributed throughout eukaryotic cells at a high concentration and cleave peptides in an ATP/ubiquitin-dependent process in a non-lysosomal pathway. An essential function of a modified proteasome, the immunoproteasome, is the processing of class I MHC peptides. This gene encodes a member of the proteasome B-type family, also known as the T1B family, that is a 20S core beta subunit. Multiple alternatively spliced transcript variants encoding distinct isoforms have been found for this gene. [provided by RefSeq, Dec 2010]</p>
Function	<p>The proteasome is a multicatalytic proteinase complex which is characterized by its ability to cleave peptides with Arg, Phe, Tyr, Leu, and Glu adjacent to the leaving group at neutral or slightly basic pH. The proteasome has an ATP-dependent proteolytic activity. This subunit has a trypsin-like activity. [UniProt]</p>
Calculated Mw	23 kDa
PTM	Acetylation
Cellular Localization	Cytoplasm, Nucleus, Proteasome

Images



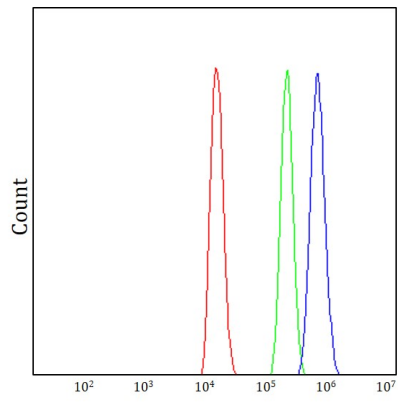
ARG43991 anti-PSMB2 antibody ICC/IF image

Immunofluorescence: U2OS cells stained with ARG43991 anti-PSMB2 antibody at 5 µg/ml dilution.



ARG43991 anti-PSMB2 antibody WB image

Western blot: 293T and HeLa stained with ARG43991 anti-PSMB2 antibody at 0.5 µg/mL dilution.



ARG43991 anti-PSMB2 antibody FACS image

Flow Cytometry: Raji cells stained with ARG43991 anti-PSMB2 antibody (blue) at $1\text{ }\mu\text{g}/1\times 10^6$ cells dilution.