

ARG44006 anti-PYCR2 antibody

Package: 50 µg
Store at: -20°C

Summary

Product Description	Rabbit Polyclonal antibody recognizes PYCR2
Tested Reactivity	Hu, Ms, Rat
Tested Application	ELISA, FACS, ICC/IF, WB
Host	Rabbit
Clonality	Polyclonal
Isotype	IgG
Target Name	PYCR2
Species	Human
Immunogen	Human PYCR2 recombinant protein
Conjugation	Un-conjugated
Alternate Names	PYCR2; Pyrroline-5-Carboxylate Reductase 2; P5CR2; Pyrroline-5-Carboxylate Reductase Family Member 2; P5C Reductase 2; EC 1.5.1.2; P5CR 2; HLD10

Application Instructions

Application table	Application	Dilution
	ELISA	0.1-0.5 µg/ml
	FACS	1-3 µg/1x10 ⁶
	ICC/IF	5 µg/ml
	WB	0.1-0.25 µg/ml
Application Note	* The dilutions indicate recommended starting dilutions and the optimal dilutions or concentrations should be determined by the scientist.	

Properties

Form	Liquid
Purification	Affinity purified with Immunogen.
Buffer	0.9% NaCl, 0.2% Na ₂ HPO ₄ and 4% Trehalose.
Stabilizer	4% Trehalose
Concentration	0.5 mg/ml
Storage instruction	For continuous use, store undiluted antibody at 2-8°C for up to a week. For long-term storage, aliquot and store at -20°C or below. Storage in frost free freezers is not recommended. Avoid repeated freeze/thaw cycles. Suggest spin the vial prior to opening. The antibody solution should be gently mixed before use.

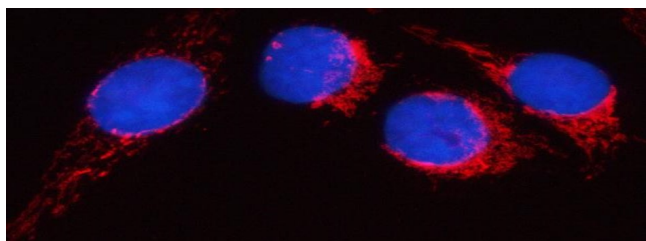
Note

For laboratory research only, not for drug, diagnostic or other use.

Bioinformation

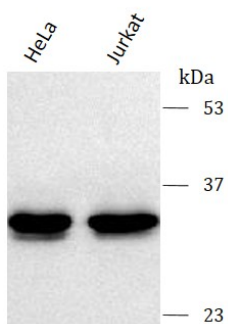
Gene Symbol	PYCR2
Gene Full Name	Pyrroline-5-Carboxylate Reductase 2
Background	This gene belongs to the pyrroline-5-carboxylate reductase family. The encoded mitochondrial protein catalyzes the conversion of pyrroline-5-carboxylate to proline, which is the last step in proline biosynthesis. Alternatively spliced transcript variants have been described for this gene.
Function	Housekeeping enzyme that catalyzes the last step in proline biosynthesis. In some cell types, such as erythrocytes, its primary function may be the generation of NADP+. Can utilize both NAD and NADP. Has higher affinity for NADP, but higher catalytic efficiency with NADH.
Calculated Mw	34 kDa
PTM	Acetylation, Phosphoprotein
Cellular Localization	Cytoplasm, Mitochondrion

Images



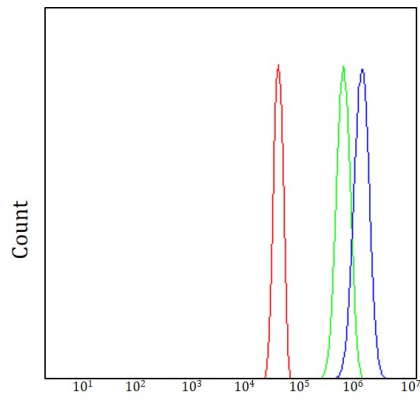
ARG44006 anti-PYCR2 antibody ICC/IF image

Immunofluorescence: U2OS cells stained with ARG44006 anti-PYCR2 antibody at 5 µg/ml dilution.



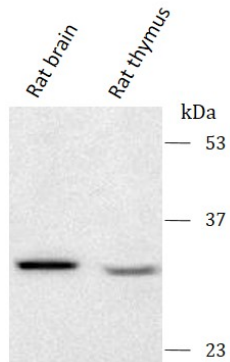
ARG44006 anti-PYCR2 antibody WB image

Western blot: HeLa and Jurkat stained with ARG44006 anti-PYCR2 antibody at 0.5 µg/mL dilution.



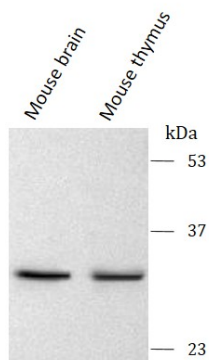
ARG44006 anti-PYCR2 antibody FACS image

Flow Cytometry: JK cells stained with ARG44006 anti-PYCR2 antibody (blue) at $1\text{ }\mu\text{g}/1\times 10^6$ cells dilution.



ARG44006 anti-PYCR2 antibody WB image

Western blot: Rat brain and Rat thymus stained with ARG44006 anti-PYCR2 antibody at $0.5\text{ }\mu\text{g}/\text{mL}$ dilution.



ARG44006 anti-PYCR2 antibody WB image

Western blot: Mouse brain and Mouse thymus stained with ARG44006 anti-PYCR2 antibody at $0.5\text{ }\mu\text{g}/\text{mL}$ dilution.