

ARG44021 anti-MFSD2A antibody

Package: 50 µg
Store at: -20°C

Summary

| | |
|---------------------|--|
| Product Description | Rabbit Polyclonal antibody recognizes MFSD2A |
| Tested Reactivity | Hu, Ms, Rat |
| Tested Application | IHC-P, WB |
| Host | Rabbit |
| Clonality | Polyclonal |
| Isotype | IgG |
| Target Name | MFSD2A |
| Species | Human |
| Immunogen | Human MFSD2A recombinant protein |
| Conjugation | Un-conjugated |
| Alternate Names | MFSD2A; MFSD2 Lysolipid Transporter A, Lysophospholipid; Sodium-Dependent Lysophosphatidylcholine Symporter 1; Major Facilitator Superfamily Domain Containing 2A; Sodium-Dependent LPC Symporter 1; SLC59A1; MFSD2; Major Facilitator Superfamily Domain-Containing Protein 2A; FLJ14490; HsMFSD2A; NLS1; Major Facilitator Superfamily Domain Containing 2; NEDMISBA; MCPH15; MFSD2a |

Application Instructions

| | | |
|-------------------|--|-----------|
| Application table | Application | Dilution |
| | IHC-P | 5 µg/mL |
| | WB | 1-2 µg/mL |
| Application Note | * The dilutions indicate recommended starting dilutions and the optimal dilutions or concentrations should be determined by the scientist. | |

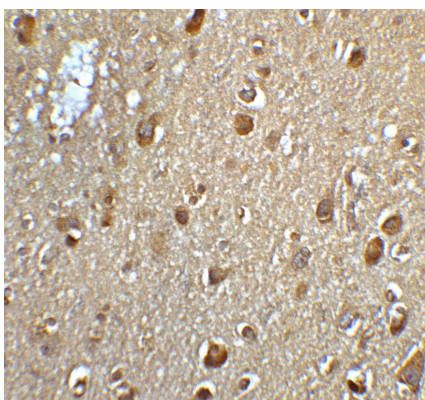
Properties

| | |
|---------------------|--|
| Form | Liquid |
| Purification | Affinity purified. |
| Buffer | PBS containing 0.02% sodium azide |
| Preservative | 0.02% sodium azide |
| Concentration | 1 mg/ml |
| Storage instruction | For continuous use, store undiluted antibody at 2-8°C for up to a week. For long-term storage, aliquot and store at -20°C or below. Storage in frost free freezers is not recommended. Avoid repeated freeze/thaw cycles. Suggest spin the vial prior to opening. The antibody solution should be gently mixed before use. |
| Note | For laboratory research only, not for drug, diagnostic or other use. |

Bioinformation

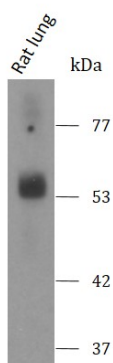
| | |
|-----------------------|---|
| Gene Symbol | MFSD2A |
| Gene Full Name | MFSD2 Lysolipid Transporter A, Lysophospholipid |
| Background | The protein encoded by this gene is a transmembrane protein and sodium-dependent lysophosphatidylcholine transporter. The encoded protein is involved in the establishment of the blood-brain barrier and is required for brain growth and function. Defects in this gene are a cause of a progressive microcephaly syndrome. |
| Function | In placenta, acts as a receptor for ERVFRD-1/syncytin-2 and is required for trophoblast fusion. |
| Calculated Mw | 60 kDa |
| PTM | Disulfide bond, Glycoprotein |
| Cellular Localization | Cell membrane, Endoplasmic reticulum, Membrane |

Images



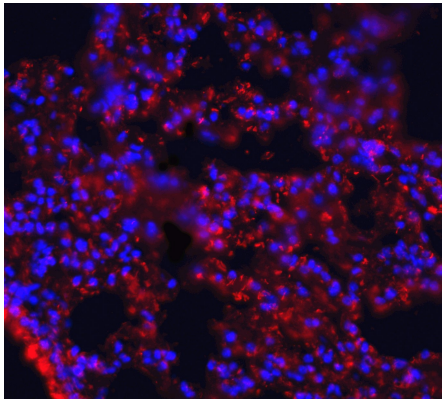
ARG44021 anti-MFSD2A antibody IHC-P image

Immunohistochemistry: Human brain stained with ARG44021 anti-MFSD2A antibody at 5 µg/ml dilution.



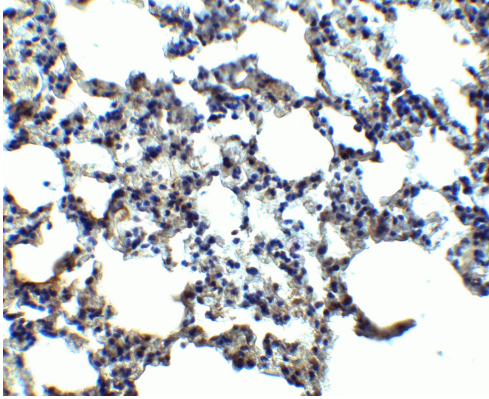
ARG44021 anti-MFSD2A antibody WB image

Western blot: Rat lung stained with ARG44021 anti-MFSD2A antibody at 2 µg/mL dilution.



ARG44021 anti-MFSD2A antibody IHC-P image

Immunohistochemistry: Mouse lung stained with ARG44021 anti-MFSD2A antibody at 20 µg/ml dilution.



ARG44021 anti-MFSD2A antibody IHC-P image

Immunohistochemistry: Mouse lung stained with ARG44021 anti-MFSD2A antibody at 2.5 µg/ml dilution.