

ARG44024 anti-N-Ras antibody

Package: 50 µg
Store at: -20°C

Summary

Product Description	Rabbit Polyclonal antibody recognizes N-RAS
Tested Reactivity	Hu
Predict Reactivity	Ms, Rat, Pig
Tested Application	WB
Host	Rabbit
Clonality	Polyclonal
Isotype	IgG
Target Name	N-RAS
Species	Human
Immunogen	Human N-RAS recombinant protein
Conjugation	Un-conjugated
Alternate Names	NRAS; NRAS Proto-Oncogene, GTPase; N-Ras; Neuroblastoma RAS Viral (V-Ras) Oncogene Homolog; Neuroblastoma RAS Viral Oncogene Homolog; Transforming Protein N-Ras; GTPase NRas; V-Ras Neuroblastoma RAS Viral Oncogene Homolog; Proto-Oncogene GTPase; N-Ras Protein Part 4; EC 3.6.5.2; ALPS4; NRAS1; HRAS1; CMNS; KRAS; NCMS; NS6

Application Instructions

Application table	Application	Dilution
	WB	1-2 µg/mL
Application Note	* The dilutions indicate recommended starting dilutions and the optimal dilutions or concentrations should be determined by the scientist.	

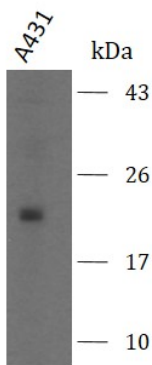
Properties

Form	Liquid
Purification	Affinity purified.
Buffer	PBS containing 0.02% sodium azide
Preservative	0.02% sodium azide
Concentration	1 mg/ml
Storage instruction	For continuous use, store undiluted antibody at 2-8°C for up to a week. For long-term storage, aliquot and store at -20°C or below. Storage in frost free freezers is not recommended. Avoid repeated freeze/thaw cycles. Suggest spin the vial prior to opening. The antibody solution should be gently mixed before use.
Note	For laboratory research only, not for drug, diagnostic or other use.

Bioinformation

Gene Symbol	NRAS
Gene Full Name	NRAS Proto-Oncogene, GTPase
Background	This is an N-ras oncogene encoding a membrane protein that shuttles between the Golgi apparatus and the plasma membrane. This shuttling is regulated through palmitoylation and depalmitoylation by the ZDHHC9-GOLGA7 complex. The encoded protein, which has intrinsic GTPase activity, is activated by a guanine nucleotide-exchange factor and inactivated by a GTPase activating protein. Mutations in this gene have been associated with somatic rectal cancer, follicular thyroid cancer, autoimmune lymphoproliferative syndrome, Noonan syndrome, and juvenile myelomonocytic leukemia.
Function	Ras proteins bind GDP/GTP and possess intrinsic GTPase activity.
Calculated Mw	21 kDa
PTM	Acetylation, Glycoprotein, Isopeptide bond, Lipoprotein, Methylation, Palmitate, Phosphoprotein, Prenylation, Ubl conjugation
Cellular Localization	Cell membrane, Golgi apparatus, Membrane

Images



ARG44024 anti-N-Ras antibody WB image

Western blot: A431 stained with ARG44024 anti-N-Ras antibody at 2 μ g/mL dilution.