

ARG44026 anti-CRBN antibody

Package: 50 µg
Store at: -20°C

Summary

Product Description	Rabbit Polyclonal antibody recognizes CRBN
Tested Reactivity	Hu, Rat
Predict Reactivity	Ms
Tested Application	IHC-P, WB
Host	Rabbit
Clonality	Polyclonal
Isotype	IgG
Target Name	CRBN
Species	Human
Immunogen	Human CRBN recombinant protein
Conjugation	Un-conjugated
Alternate Names	CRBN; Cereblon; MRT2; Protein Cereblon; MRT2A; Mental Retardation, Non-Syndromic, Autosomal Recessive, 2A; Protein X 0001

Application Instructions

Application table	Application	Dilution
	IHC-P	5 µg/mL
	WB	1-2 µg/mL
Application Note	* The dilutions indicate recommended starting dilutions and the optimal dilutions or concentrations should be determined by the scientist.	

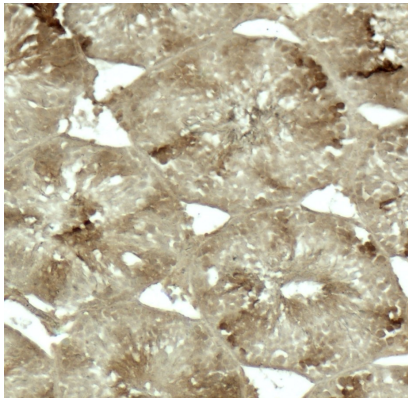
Properties

Form	Liquid
Purification	Affinity purified.
Buffer	PBS containing 0.02% sodium azide
Preservative	0.02% sodium azide
Concentration	1 mg/ml
Storage instruction	For continuous use, store undiluted antibody at 2-8°C for up to a week. For long-term storage, aliquot and store at -20°C or below. Storage in frost free freezers is not recommended. Avoid repeated freeze/thaw cycles. Suggest spin the vial prior to opening. The antibody solution should be gently mixed before use.
Note	For laboratory research only, not for drug, diagnostic or other use.

Bioinformation

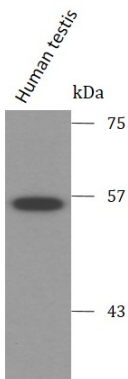
Gene Symbol	CRBN
Gene Full Name	Cereblon
Background	This gene encodes a protein related to the Lon protease protein family. In rodents and other mammals this gene product is found in the cytoplasm localized with a calcium channel membrane protein, and is thought to play a role in brain development. Mutations in this gene are associated with autosomal recessive nonsyndromic cognitive disability. Multiple transcript variants encoding different isoforms have been found for this gene.
Function	Substrate recognition component of a DCX (DDB1-CUL4-X-box) E3 protein ligase complex that mediates the ubiquitination and subsequent proteasomal degradation of target proteins, such as MEIS2 or ILF2.
Calculated Mw	51 kDa
PTM	Phosphoprotein, Ubl conjugation
Cellular Localization	Cytoplasm, Membrane, Nucleus

Images



ARG44026 anti-CRBN antibody IHC-P image

Immunohistochemistry: Rat testis stained with ARG44026 anti-CRBN antibody at 5 µg/ml dilution.



ARG44026 anti-CRBN antibody WB image

Western blot: Human testis stained with ARG44026 anti-CRBN antibody at 1 µg/ml dilution.