

## ARG44027 anti-CD80 antibody

Package: 50 µg  
Store at: -20°C

### Summary

Product Description	Rabbit Polyclonal antibody recognizes CD80
Tested Reactivity	Hu, Ms
Tested Application	IHC-P, WB
Host	Rabbit
Clonality	Polyclonal
Isotype	IgG
Target Name	CD80
Species	Human
Immunogen	Human CD80 recombinant protein
Conjugation	Un-conjugated
Alternate Names	CD80; CD80 Molecule; CD28LG1; CD28LG; B7.1; B7-1; CD80 Antigen (CD28 Antigen Ligand 1; B7-1 Antigen); T-Lymphocyte Activation Antigen CD80; B-Lymphocyte Activation Antigen B7; CTLA-4 Counter-Receptor B7.1; Activation B7-1 Antigen; LAB7; BB1; B7; Costimulatory Molecule Variant IgV-CD80; Costimulatory Factor CD80; CD80 Molecule; CD80 Antigen

### Application Instructions

Application table	Application	Dilution
	IHC-P	2 µg/mL
	WB	1-2 µg/mL
Application Note	* The dilutions indicate recommended starting dilutions and the optimal dilutions or concentrations should be determined by the scientist.	

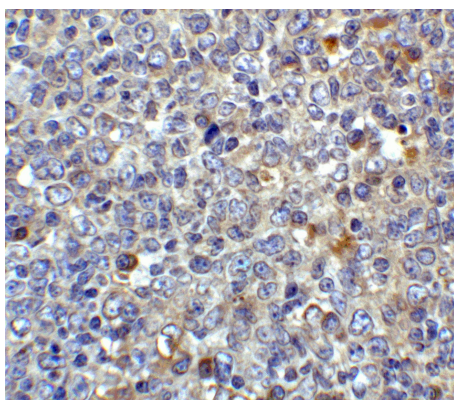
### Properties

Form	Liquid
Purification	Affinity purified.
Buffer	PBS containing 0.02% sodium azide
Preservative	0.02% sodium azide
Concentration	1 mg/ml
Storage instruction	For continuous use, store undiluted antibody at 2-8°C for up to a week. For long-term storage, aliquot and store at -20°C or below. Storage in frost free freezers is not recommended. Avoid repeated freeze/thaw cycles. Suggest spin the vial prior to opening. The antibody solution should be gently mixed before use.
Note	For laboratory research only, not for drug, diagnostic or other use.

## Bioinformation

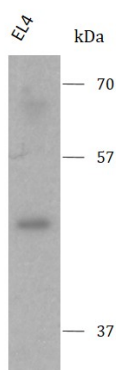
Gene Symbol	CD80
Gene Full Name	CD80 Molecule
Background	The protein encoded by this gene is a membrane receptor that is activated by the binding of CD28 or CTLA-4. The activated protein induces T-cell proliferation and cytokine production. This protein can act as a receptor for adenovirus subgroup B and may play a role in lupus neuropathy.
Function	Involved in the costimulatory signal essential for T-lymphocyte activation. T-cell proliferation and cytokine production is induced by the binding of CD28, binding to CTLA-4 has opposite effects and inhibits T-cell activation.
Calculated Mw	33 kDa
PTM	Disulfide bond, Glycoprotein, Phosphoprotein
Cellular Localization	Membrane

## Images



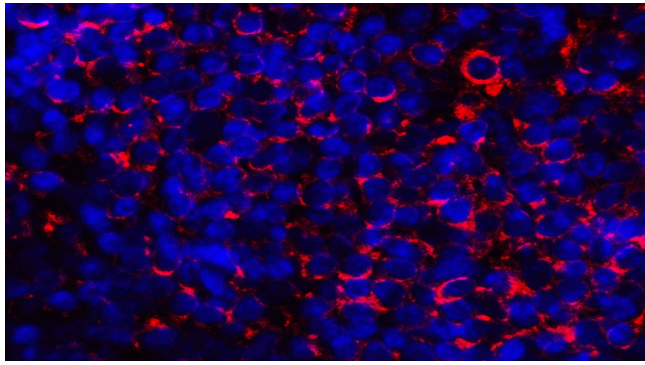
ARG44027 anti-CD80 antibody IHC-P image

Immunohistochemistry: Human tonsil stained with ARG44027 anti-CD80 antibody at 5 µg/ml dilution.



ARG44027 anti-CD80 antibody WB image

Western blot: EL4 stained with ARG44027 anti-CD80 antibody at 1 µg/ml dilution.



ARG44027 anti-CD80 antibody IHC-P image

Immunofluorescence: Human tonsil stained with ARG44027 anti-CD80 antibody at 20 µg/ml dilution.