

ARG44045 anti-FIP200 antibody

Package: 100 µl
Store at: -20°C

Summary

Product Description	Rabbit Polyclonal antibody recognizes FIP200
Tested Reactivity	Hu, Ms, Rat
Tested Application	IHC-P, WB
Host	Rabbit
Clonality	Polyclonal
Isotype	IgG
Target Name	FIP200
Species	Human
Immunogen	Recombinant fusion protein containing a sequence corresponding to amino acids 1280-1400 of Human FIP200 (NP_055596.3).
Conjugation	Un-conjugated
Alternate Names	RB1CC1; RB1 Inducible Coiled-Coil 1; FIP200; KIAA0203; PPP1R131; ATG17; FAK Family Kinase-Interacting Protein Of 200 KDa; 200 KDa FAK Family Kinase-Interacting Protein; Phosphatase 1, Regulatory Subunit 131; RB1-Inducible Coiled-Coil Protein 1; DRAGOU14; Cc1; RBICC; CC1

Application Instructions

Application table	Application	Dilution
	IHC-P	1:500 - 1:2000
	WB	1:50 - 1:200
Application Note	* The dilutions indicate recommended starting dilutions and the optimal dilutions or concentrations should be determined by the scientist.	

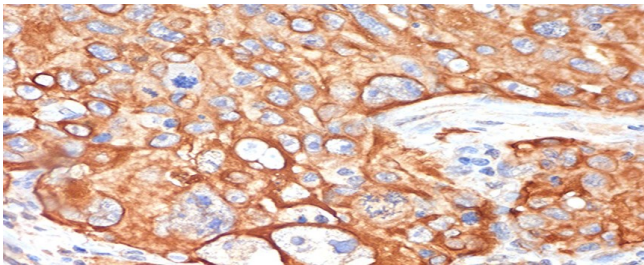
Properties

Form	Liquid
Purification	Affinity purified.
Buffer	PBS (pH 7.3), 0.01% Thimerosal and 50% Glycerol.
Preservative	0.01% Thimerosal
Stabilizer	50% Glycerol
Storage instruction	For continuous use, store undiluted antibody at 2-8°C for up to a week. For long-term storage, aliquot and store at -20°C. Storage in frost free freezers is not recommended. Avoid repeated freeze/thaw cycles. Suggest spin the vial prior to opening. The antibody solution should be gently mixed before use.
Note	For laboratory research only, not for drug, diagnostic or other use.

Bioinformation

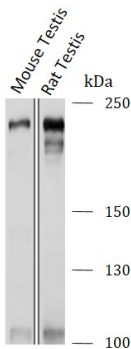
Gene Symbol	RB1CC1
Gene Full Name	RB1 Inducible Coiled-Coil 1
Background	The protein encoded by this gene interacts with signaling pathways to coordinately regulate cell growth, cell proliferation, apoptosis, autophagy, and cell migration. This tumor suppressor also enhances retinoblastoma 1 gene expression in cancer cells. Alternative splicing results in multiple transcript variants encoding distinct isoforms.
Function	Plays an indispensable role in fetal hematopoiesis and in the regulation of neuronal homeostasis.
Calculated Mw	183 kDa
PTM	Phosphoprotein
Cellular Localization	Cytoplasm, Lysosome, Nucleus

Images



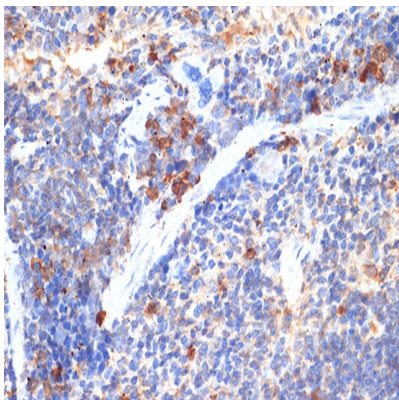
ARG44045 anti-FIP200 antibody IHC-P image

Immunohistochemistry: Human lung cancer stained with ARG44045 anti-FIP200 antibody at 1:100 dilution.



ARG44045 anti-FIP200 antibody WB image

Western blot: Mouse Testis and Rat Testis stained with ARG44045 anti-FIP200 antibody at 1:1000 dilution.



ARG44045 anti-FIP200 antibody IHC-P image

Immunohistochemistry: Mouse spleen stained with ARG44045 anti-FIP200 antibody at 1:100 dilution.

ARG44045 anti-FIP200 antibody WB image

Western blot: U2OS and HeLa stained with ARG44045 anti-FIP200 antibody at 1:1000 dilution.

