

ARG44084 anti-KLK7 antibody

Package: 50 µg
Store at: -20°C

Summary

Product Description	Rabbit Polyclonal recognizes KLK7
Tested Reactivity	Rat
Tested Application	IHC-P, WB
Host	Rabbit
Clonality	Polyclonal
Isotype	IgG
Target Name	KLK7
Species	Rat
Immunogen	Rat KLK7 recombinant protein (Position: K30-N238).
Conjugation	Un-conjugated
Alternate Names	KLK7; Kallikrein Related Peptidase 7; SCCE; PRSS6; Kallikrein 7 (Chymotryptic, Stratum Corneum); Stratum Corneum Chymotryptic Enzyme; Serine Protease 6; Kallikrein-7; HK7; Signal Protein; EC 3.4.21.117; EC 3.4.21; HSCCE

Application Instructions

Application table	Application	Dilution
	IHC-P	2 - 5 µg/ml
	WB	0.25 - 0.5 µg/ml
Application Note	The dilutions indicate recommended starting dilutions and the optimal dilutions or concentrations should be determined by the scientist.	

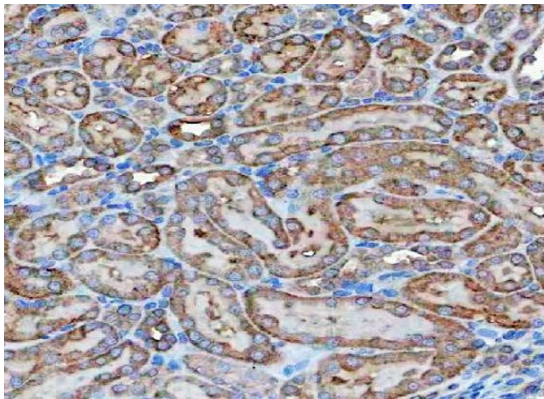
Properties

Form	Liquid
Purification	Affinity purification with immunogen.
Buffer	0.9% NaCl, 0.2% Na ₂ HPO ₄ , 0.05% Sodium azide and 4% Trehalose.
Preservative	0.05% Sodium azide
Stabilizer	4% Trehalose
Concentration	0.5 mg/ml
Storage instruction	For continuous use, store undiluted antibody at 2-8°C for up to a week. For long-term storage, aliquot and store at -20°C or below. Storage in frost free freezers is not recommended. Avoid repeated freeze/thaw cycles. Suggest spin the vial prior to opening. The antibody solution should be gently mixed before use.
Note	For laboratory research only, not for drug, diagnostic or other use.

Bioinformation

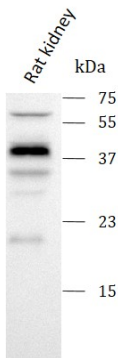
Gene Symbol	KLK7
Gene Full Name	Kallikrein Related Peptidase 7
Background	<p>This gene encodes a member of the kallikrein subfamily of serine proteases. These enzymes have diverse physiological functions and many kallikrein genes are biomarkers for cancer. The encoded protein has chymotrypsin-like activity and plays a role in the proteolysis of intercellular cohesive structures that precedes desquamation, the shedding of the outermost layer of the epidermis. The encoded protein may play a role in cancer invasion and metastasis, and increased expression of this gene is associated with unfavorable prognosis and progression of several types of cancer. Polymorphisms in this gene may play a role in the development of atopic dermatitis. Alternatively spliced transcript variants encoding multiple isoforms have been observed for this gene, which is one of fifteen kallikrein subfamily members located in a gene cluster on chromosome 19.</p>
Function	<p>May catalyze the degradation of intercellular cohesive structures in the cornified layer of the skin in the continuous shedding of cells from the skin surface. Specific for amino acid residues with aromatic side chains in the P1 position. Cleaves insulin A chain at '14-Tyr- -Gln-15' and insulin B chain at '6-Leu- -Cys-7', '16-Tyr- -Leu-17', '25-Phe- -Tyr-26' and '26-Tyr- -Thr-27'. Could play a role in the activation of precursors to inflammatory cytokines.</p>
Calculated Mw	28 kDa
PTM	Disulfide bond, Glycoprotein, Zymogen
Cellular Localization	Secreted

Images



ARG44084 anti-KLK7 antibody IHC-P image

Immunohistochemistry: Rat kidney stained with ARG44084 anti-KLK7 antibody at 2 µg/ml dilution.



ARG44084 anti-KLK7 antibody WB image

Western blot: Rat kidney stained with ARG44084 anti-KLK7 antibody at 0.5 µg/mL dilution.