

ARG44106 anti-NVL antibody

Package: 50 µg
Store at: -20°C

Summary

Product Description	Rabbit Polyclonal recognizes NVL
Tested Reactivity	Hu, Rat
Tested Application	FACS, ICC/IF, IHC-P, WB
Host	Rabbit
Clonality	Polyclonal
Isotype	IgG
Target Name	NVL
Species	Human
Immunogen	Human NVL recombinant protein (Position: R4-Q807).
Conjugation	Un-conjugated
Alternate Names	NVL; Nuclear VCP Like; NVL2; Nuclear Valosin-Containing Protein-Like; Nuclear VCP-Like Protein; NVLp

Application Instructions

Application table	Application	Dilution
	FACS	1 - 3 µg/10 ⁶ cells
	ICC/IF	5 µg/ml
	IHC-P	2-5 µg/ml
	WB	0.25 - 0.5 µg/ml
Application Note	The dilutions indicate recommended starting dilutions and the optimal dilutions or concentrations should be determined by the scientist.	

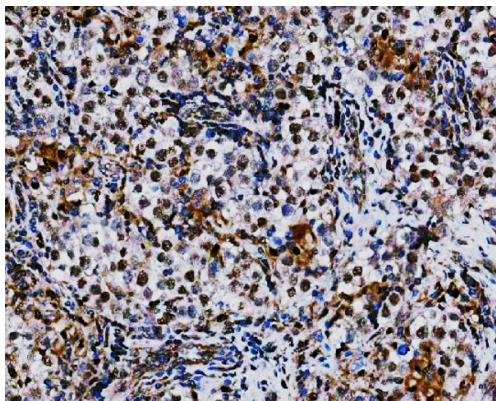
Properties

Form	Liquid
Purification	Affinity purification with immunogen.
Buffer	0.9% NaCl, 0.2% Na ₂ HPO ₄ , 0.05% Sodium azide and 4% Trehalose.
Preservative	0.05% Sodium azide
Stabilizer	4% Trehalose
Concentration	0.5 mg/ml
Storage instruction	For continuous use, store undiluted antibody at 2-8°C for up to a week. For long-term storage, aliquot and store at -20°C or below. Storage in frost free freezers is not recommended. Avoid repeated freeze/thaw cycles. Suggest spin the vial prior to opening. The antibody solution should be gently mixed before use.

Bioinformation

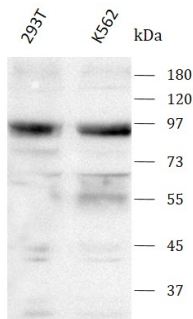
Gene Symbol	NVL
Gene Full Name	Nuclear VCP Like
Background	This gene encodes a member of the AAA (ATPases associated with diverse cellular activities) superfamily. Multiple transcript variants encoding different isoforms have been found for this gene. Two encoded proteins, described as major and minor isoforms, have been localized to distinct regions of the nucleus. The largest encoded protein (major isoform) has been localized to the nucleolus and shown to participate in ribosome biosynthesis (PMID: 15469983, 16782053), while the minor isoform has been localized to the nucleoplasm.
Function	Participates in the assembly of the telomerase holoenzyme and effecting of telomerase activity via its interaction with TERT.
Calculated Mw	95 kDa
PTM	Acetylation, Isopeptide bond, Phosphoprotein, Ubl conjugation
Cellular Localization	Nucleus

Images



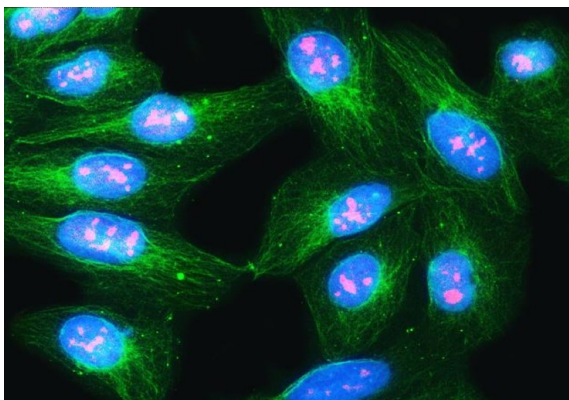
ARG44106 anti-NVL antibody IHC-P image

Immunohistochemistry: Human testicular germ cell tumors stained with ARG44106 anti-NVL antibody at 2 µg/ml dilution.



ARG44106 anti-NVL antibody WB image

Western blot: 293T and K562 stained with ARG44106 anti-NVL antibody at 0.5 µg/mL dilution.



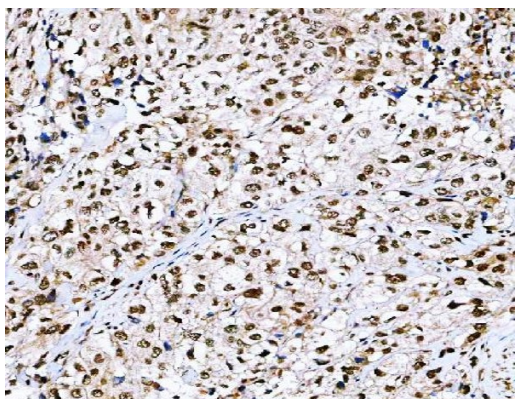
ARG44106 anti-NVL antibody ICC/IF image

Immunofluorescence: U2OS stained with ARG44106 anti-NVL antibody at 5 μ g/ml dilution.



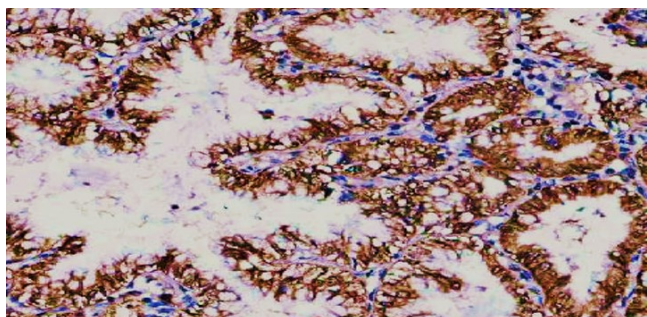
ARG44106 anti-NVL antibody IHC-P image

Immunohistochemistry: Rat brain stained with ARG44106 anti-NVL antibody at 2 μ g/ml dilution.



ARG44106 anti-NVL antibody IHC-P image

Immunohistochemistry: Human urothelial carcinoma stained with ARG44106 anti-NVL antibody at 2 μ g/ml dilution.



ARG44106 anti-NVL antibody IHC-P image

Immunohistochemistry: Human lung adenocarcinoma stained with ARG44106 anti-NVL antibody at 2 μ g/ml dilution.