

ARG44110 anti-NUDCD3 antibody

Package: 50 µg
Store at: -20°C

Summary

Product Description	Rabbit Polyclonal recognizes NUDCD3
Tested Reactivity	Hu
Tested Application	FACS, ICC/IF, IHC-P, WB
Host	Rabbit
Clonality	Polyclonal
Isotype	IgG
Target Name	NUDCD3
Species	Human
Immunogen	Human NUDCD3 recombinant protein (Position: M1-Y271).
Conjugation	Un-conjugated
Alternate Names	NUDCD3; NudC Domain Containing 3; KIAA1068; NudCL; NudC Domain-Containing Protein 3; NudC-Like Protein

Application Instructions

Application table	Application	Dilution
	FACS	1 - 3 µg/10 ⁶ cells
	ICC/IF	5 µg/ml
	IHC-P	2-5 µg/ml
	WB	0.25 - 0.5 µg/ml
Application Note	The dilutions indicate recommended starting dilutions and the optimal dilutions or concentrations should be determined by the scientist.	

Properties

Form	Liquid
Purification	Affinity purification with immunogen.
Buffer	0.9% NaCl, 0.2% Na ₂ HPO ₄ , 0.05% Sodium azide and 4% Trehalose.
Preservative	0.05% Sodium azide
Stabilizer	4% Trehalose
Concentration	0.5 mg/ml
Storage instruction	For continuous use, store undiluted antibody at 2-8°C for up to a week. For long-term storage, aliquot and store at -20°C or below. Storage in frost free freezers is not recommended. Avoid repeated freeze/thaw cycles. Suggest spin the vial prior to opening. The antibody solution should be gently mixed before use.

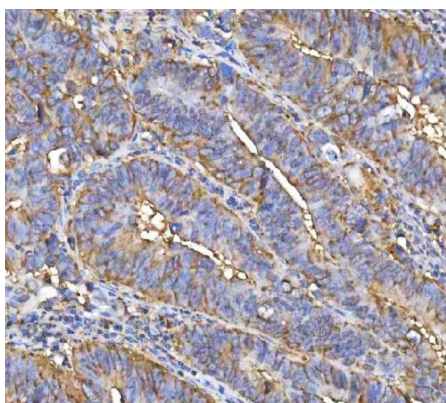
Note

For laboratory research only, not for drug, diagnostic or other use.

Bioinformation

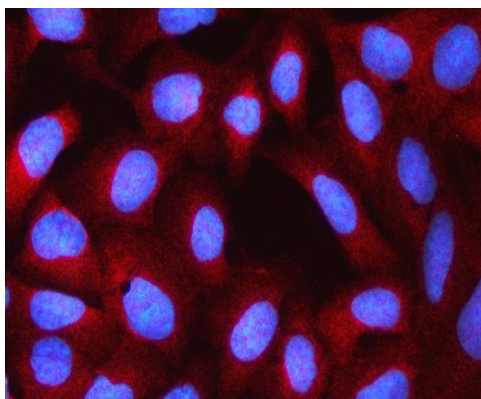
Gene Symbol	NUDCD3
Gene Full Name	NudC Domain Containing 3
Background	The product of this gene functions to maintain the stability of dynein intermediate chain. Depletion of this gene product results in aggregation and degradation of dynein intermediate chain, mislocalization of the dynein complex from kinetochores, spindle microtubules, and spindle poles, and loss of gamma-tubulin from spindle poles. The protein localizes to the Golgi apparatus during interphase, and levels of the protein increase after the G1/S transition.
Calculated Mw	41 kDa
PTM	Phosphoprotein
Cellular Localization	Cytoplasm

Images



ARG44110 anti-NUDCD3 antibody IHC-P image

Immunohistochemistry: Human colorectal adenocarcinoma stained with ARG44110 anti-NUDCD3 antibody at 2 µg/ml dilution.

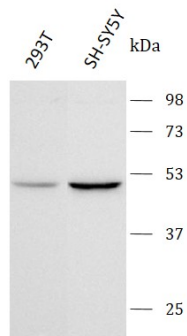


ARG44110 anti-NUDCD3 antibody ICC/IF image

Immunofluorescence: U2OS stained with ARG44110 anti-NUDCD3 antibody at 5 µg/ml dilution.

ARG44110 anti-NUDCD3 antibody WB image

Western blot: 293T and SH-SY5Y stained with ARG44110 anti-NUDCD3 antibody at 0.5 µg/mL dilution.



ARG44110 anti-NUDCD3 antibody FACS image

Flow Cytometry: RT4 stained with ARG44110 anti-NUDCD3 antibody at 1 µg/10⁶ cells dilution.

