

## ARG44126 anti-NRDC antibody

Package: 50 µg  
Store at: -20°C

### Summary

Product Description	Rabbit Polyclonal recognizes NRDC
Tested Reactivity	Hu, Ms, Rat
Tested Application	FACS, WB
Host	Rabbit
Clonality	Polyclonal
Isotype	IgG
Target Name	NRDC
Species	Human
Immunogen	Human NRD1/NRDC recombinant protein (Position: K427-R967).
Conjugation	Un-conjugated
Alternate Names	NRDC; Nardilysin Convertase; HNRD1; HNRD2; NRD1; Nardilysin (N-Arginine Dibasic Convertase); N-Arginine Dibasic Convertase; NRD Convertase; EC 3.4.24.61; Nardilysin; EC 3.4.24; NRD-C

### Application Instructions

Application table	Application	Dilution
	FACS	1 - 3 µg/10 <sup>6</sup> cells
	WB	0.25-0.5 µg/ml
Application Note	The dilutions indicate recommended starting dilutions and the optimal dilutions or concentrations should be determined by the scientist.	

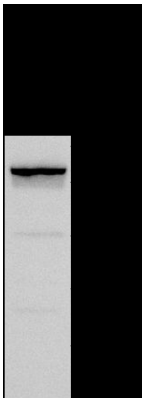
### Properties

Form	Liquid
Purification	Affinity purification with immunogen.
Buffer	0.9% NaCl, 0.2% Na <sub>2</sub> HPO <sub>4</sub> , 0.05% Sodium azide and 4% Trehalose.
Preservative	0.05% Sodium azide
Stabilizer	4% Trehalose
Concentration	0.5 mg/ml
Storage instruction	For continuous use, store undiluted antibody at 2-8°C for up to a week. For long-term storage, aliquot and store at -20°C or below. Storage in frost free freezers is not recommended. Avoid repeated freeze/thaw cycles. Suggest spin the vial prior to opening. The antibody solution should be gently mixed before use.
Note	For laboratory research only, not for drug, diagnostic or other use.

Bioinformation

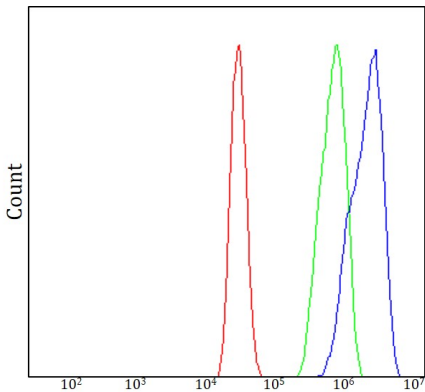
Gene Symbol	NRDC
Gene Full Name	Nardilysin Convertase
Background	This gene encodes a zinc-dependent endopeptidase that cleaves peptide substrates at the N-terminus of arginine residues in dibasic moieties and is a member of the peptidase M16 family. This protein interacts with heparin-binding EGF-like growth factor and plays a role in cell migration and proliferation. Multiple transcript variants encoding different isoforms have been found for this gene.
Function	Cleaves peptide substrates on the N-terminus of arginine residues in dibasic pairs. Is a critical activator of BACE1- and ADAM17-mediated pro-neuregulin ectodomain shedding, involved in the positive regulation of axonal maturation and myelination. Required for proper functioning of 2-oxoglutarate dehydrogenase (OGDH).
Calculated Mw	132 kDa
PTM	Phosphoprotein
Cellular Localization	Cell projection, Mitochondrion

Images



ARG44126 anti-NRDC antibody WB image

Western blot: K562 stained with ARG44126 anti-NRDC antibody at 0.5 µg/ml dilution.



ARG44126 anti-NRDC antibody FACS image

Flow Cytometry: MCF-7 stained with ARG44126 anti-NRDC antibody at 1 µg/10<sup>6</sup> cells dilution.