

ARG44137 anti-MARK3 antibody

Package: 50 µg
Store at: -20°C

Summary

Product Description	Rabbit Polyclonal recognizes MARK3
Tested Reactivity	Hu, Ms, Rat
Tested Application	FACS, IHC-P, WB
Host	Rabbit
Clonality	Polyclonal
Isotype	IgG
Target Name	MARK3
Species	Human
Immunogen	Human MARK3 recombinant protein (Position: H311-D648).
Conjugation	Un-conjugated
Alternate Names	MARK3; Microtubule Affinity Regulating Kinase 3; CTAK1; MAP/Microtubule Affinity-Regulating Kinase 3; KP78; Serine/Threonine-Protein Kinase P78; Cdc25C-Associated Protein Kinase 1; Ser/Thr Protein Kinase PAR-1; Protein Kinase STK10; ELKL Motif Kinase 2; EC 2.7.11.1; PAR-1A; Par-1a; C-TAK1; EMK-2; EC 2.7.11; PAR1A; VIPB; EMK2

Application Instructions

Application table	Application	Dilution
	FACS	1 - 3 µg/10 ⁶ cells
	IHC-P	2 - 5 µg/ml
	WB	0.25 - 0.5 µg/ml
Application Note	The dilutions indicate recommended starting dilutions and the optimal dilutions or concentrations should be determined by the scientist.	

Properties

Form	Liquid
Purification	Affinity purification with immunogen.
Buffer	0.9% NaCl, 0.2% Na ₂ HPO ₄ , 0.05% Sodium azide and 4% Trehalose.
Preservative	0.05% Sodium azide
Stabilizer	4% Trehalose
Concentration	0.5 mg/ml
Storage instruction	For continuous use, store undiluted antibody at 2-8°C for up to a week. For long-term storage, aliquot and store at -20°C or below. Storage in frost free freezers is not recommended. Avoid repeated freeze/thaw cycles. Suggest spin the vial prior to opening. The antibody solution should be gently mixed

before use.

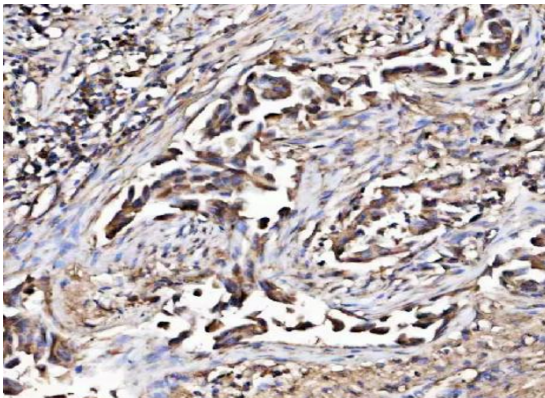
Note

For laboratory research only, not for drug, diagnostic or other use.

Bioinformation

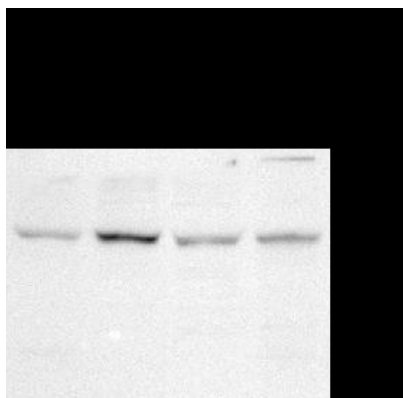
Gene Symbol	MARK3
Gene Full Name	Microtubule Affinity Regulating Kinase 3
Background	The protein encoded by this gene is activated by phosphorylation and in turn is involved in the phosphorylation of tau proteins MAP2 and MAP4. Several transcript variants encoding different isoforms have been found for this gene.
Function	Serine/threonine-protein kinase.
Research Area	Disease variant
Calculated Mw	84 kDa
PTM	Phosphoprotein
Cellular Localization	Cell membrane, Cell projection, Cytoplasm, Membrane

Images



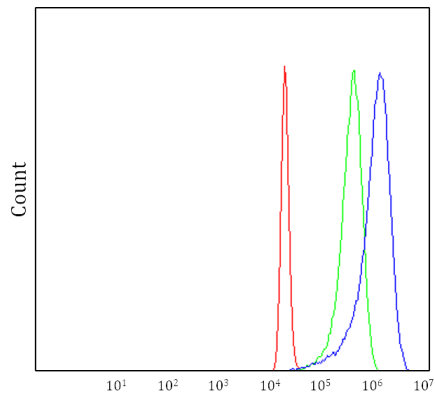
ARG44137 anti-MARK3 antibody IHC-P image

Immunohistochemistry: Human lung cancer stained with ARG44137 anti-MARK3 antibody at 2 µg/ml dilution.



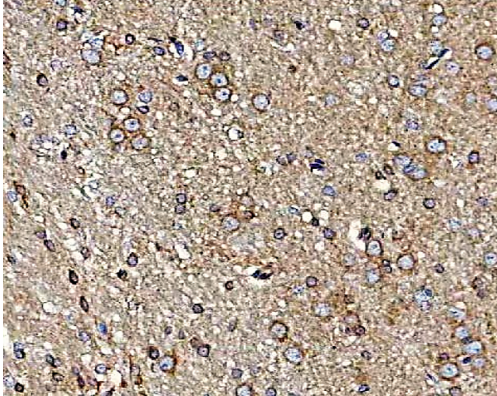
ARG44137 anti-MARK3 antibody WB image

Western blot: HeLa, K562, 293T and MCF-7 stained with ARG44137 anti-MARK3 antibody at 0.5 µg/ml dilution.



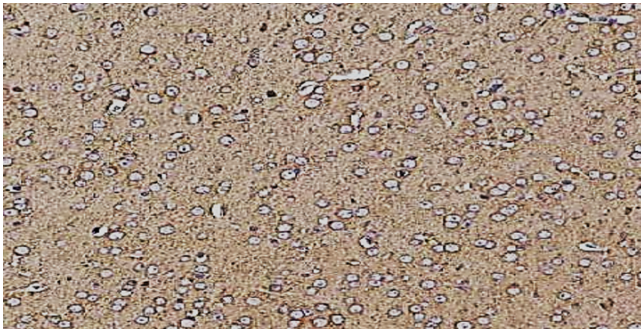
ARG44137 anti-MARK3 antibody FACS image

Flow Cytometry: 293T stained with ARG44137 anti-MARK3 antibody at 1 µg/10⁶ cells dilution.



ARG44137 anti-MARK3 antibody IHC-P image

Immunohistochemistry: Rat brain stained with ARG44137 anti-MARK3 antibody at 2 µg/ml dilution.



ARG44137 anti-MARK3 antibody IHC-P image

Immunohistochemistry: Mouse brain stained with ARG44137 anti-MARK3 antibody at 2 µg/ml dilution.