

ARG44168 anti-MARCHF2 antibody

Package: 50 µg
Store at: -20°C

Summary

Product Description	Rabbit Polyclonal antibody recognizes MARCHF2
Tested Reactivity	Hu
Tested Application	ICC/IF, WB
Host	Rabbit
Clonality	Polyclonal
Isotype	IgG
Target Name	MARCHF2
Species	Human
Immunogen	Recombinant protein of Human MARCHF2
Conjugation	Un-conjugated
Alternate Names	MARCHF2; Membrane Associated Ring-CH-Type Finger 2; MARCH-II; RNF172; HSPC240; MARCH2; Membrane-Associated Ring Finger (C3HC4) 2; E3 Ubiquitin Protein Ligase; RING-Type E3 Ubiquitin Transferase MARCHF2; Membrane-Associated RING Finger Protein 2; Membrane-Associated RING-CH Protein II; E3 Ubiquitin-Protein Ligase MARCHF2; RING Finger Protein 172; Membrane-Associated Ring Finger (C3HC4) 2; RING-Type E3 Ubiquitin Transferase MARCH2; E3 Ubiquitin-Protein Ligase MARCH2; Membrane Associated Ring Finger 2; EC 2.3.2.27; EC 6.3.2

Application Instructions

Application table	Application	Dilution
	ICC/IF	5 µg/ml
	WB	0.25-0.5 µg/ml

Application Note * The dilutions indicate recommended starting dilutions and the optimal dilutions or concentrations should be determined by the scientist.

Properties

Form	Liquid
Purification	Affinity purification with immunogen.
Buffer	0.9% NaCl, 0.2% Na ₂ HPO ₄ , 0.05% Sodium azide and 5% BSA.
Preservative	0.05% Sodium azide
Stabilizer	5% BSA
Concentration	0.5 mg/ml
Storage instruction	For continuous use, store undiluted antibody at 2-8°C for up to a week. For long-term storage, aliquot and store at -20°C or below. Storage in frost free freezers is not recommended. Avoid repeated freeze/thaw cycles. Suggest spin the vial prior to opening. The antibody solution should be gently mixed

before use.

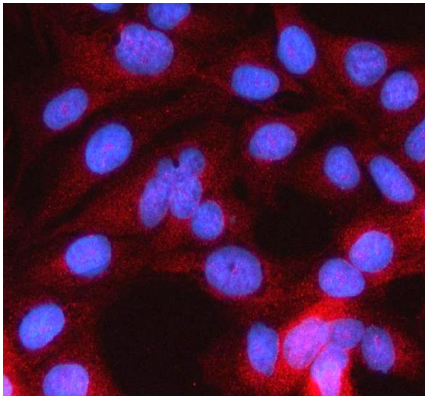
Note

For laboratory research only, not for drug, diagnostic or other use.

Bioinformation

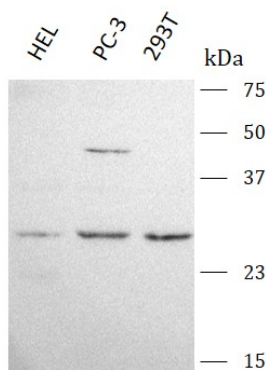
Gene Symbol	MARCHF2
Gene Full Name	Membrane Associated Ring-Ch-Type Finger 2
Background	MARCH2 is a member of the MARCH family of membrane-bound E3 ubiquitin ligases (EC 6.3.2.19). MARCH enzymes add ubiquitin (see MIM 191339) to target lysines in substrate proteins, thereby signaling their vesicular transport between membrane compartments. MARCH2 reduces surface accumulation of several glycoproteins and appears to regulate early endosome-to-trans-Golgi network (TGN) trafficking.
Function	E3 ubiquitin-protein ligase that may mediate ubiquitination of TFRC and CD86, and promote their subsequent endocytosis and sorting to lysosomes via multivesicular bodies. E3 ubiquitin ligases accept ubiquitin from an E2 ubiquitin-conjugating enzyme in the form of a thioester and then directly transfer the ubiquitin to targeted substrates.
Calculated Mw	27 kDa
Cellular Localization	Cell membrane, Cytoplasm, Endoplasmic reticulum, Endosome, Golgi apparatus, Lysosome, Membrane

Images



ARG44168 anti-MARCHF2 antibody ICC/IF image

Immunofluorescence: HeLa stained with ARG44168 anti-MARCHF2 antibody at 5 µg/mL dilution.



ARG44168 anti-MARCHF2 antibody WB image

Western blot: HEL, PC-3 and 293T stained with ARG44168 anti-MARCHF2 antibody at 0.5 µg/mL dilution.