

ARG44176 anti-NUBPL antibody

Package: 50 µg
Store at: -20°C

Summary

Product Description	Rabbit Polyclonal antibody recognizes NUBPL
Tested Reactivity	Hu, Ms
Tested Application	FACS, ICC/IF, IHC-P, WB
Host	Rabbit
Clonality	Polyclonal
Isotype	IgG
Target Name	NUBPL
Species	Human
Immunogen	Recombinant protein of Human NUBPL
Conjugation	Un-conjugated
Alternate Names	NUBPL; NUBP Iron-Sulfur Cluster Assembly Factor, Mitochondrial; HuInd1; C14orf127; IND1; Iron-Sulfur Protein Required For NADH Dehydrogenase; Nucleotide Binding Protein Like; Iron-Sulfur Protein NUBPL; IND1 Homolog; FLJ12660; Chromosome 14 Open Reading Frame 127; Nucleotide Binding Protein-Like; Nucleotide-Binding Protein-Like; MC1DN21

Application Instructions

Application table	Application	Dilution
	FACS	1-3 µg / 10 ⁶ cells
	ICC/IF	5 µg/ml
	IHC-P	2-5 µg/ml
	WB	0.25-0.5 µg/ml
Application Note	* The dilutions indicate recommended starting dilutions and the optimal dilutions or concentrations should be determined by the scientist.	

Properties

Form	Liquid
Purification	Affinity purification with immunogen.
Buffer	0.9% NaCl, 0.2% Na ₂ HPO ₄ , 0.05% Sodium azide and 5% BSA.
Preservative	0.05% Sodium azide
Stabilizer	5% BSA
Concentration	0.5 mg/ml
Storage instruction	For continuous use, store undiluted antibody at 2-8°C for up to a week. For long-term storage, aliquot and store at -20°C or below. Storage in frost free freezers is not recommended. Avoid repeated

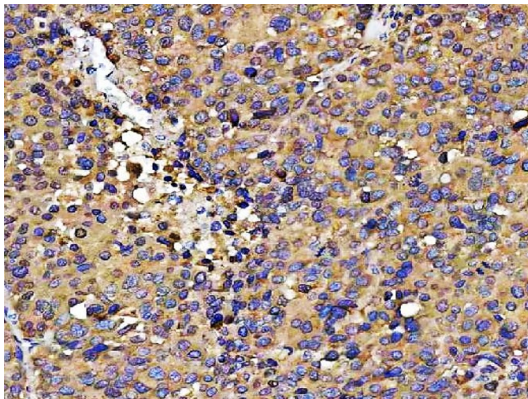
freeze/thaw cycles. Suggest spin the vial prior to opening. The antibody solution should be gently mixed before use.

Note For laboratory research only, not for drug, diagnostic or other use.

Bioinformation

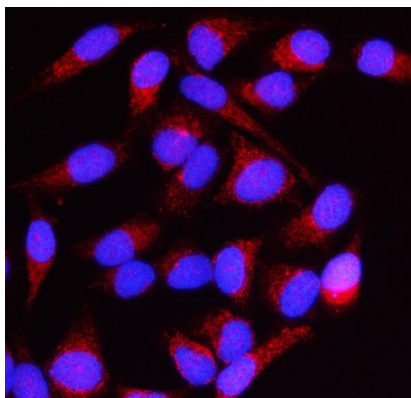
Gene Symbol	NUBPL
Gene Full Name	Nubp Iron-Sulfur Cluster Assembly Factor, Mitochondrial
Background	This gene encodes a member of the Mrp/NBP35 ATP-binding proteins family. The encoded protein is required for the assembly of the respiratory chain NADH dehydrogenase (complex I), an oligomeric enzymatic complex located in the inner mitochondrial membrane. Mutations in this gene cause mitochondrial complex I deficiency. Alternative splicing results in multiple transcript variants.
Function	Required for the assembly of the mitochondrial membrane respiratory chain NADH dehydrogenase (Complex I). May deliver of one or more Fe-S clusters to complex I subunits.
Calculated Mw	34 kDa
Cellular Localization	Mitochondrion

Images



ARG44176 anti-NUBPL antibody IHC-P image

Immunohistochemistry: Human liver cancer stained with ARG44176 anti-NUBPL antibody at 2 µg/mL dilution.

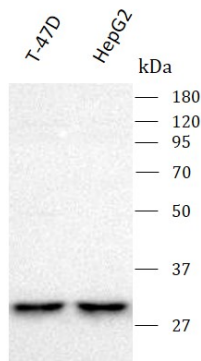


ARG44176 anti-NUBPL antibody ICC/IF image

Immunofluorescence: HeLa stained with ARG44176 anti-NUBPL antibody at 5 µg/mL dilution.

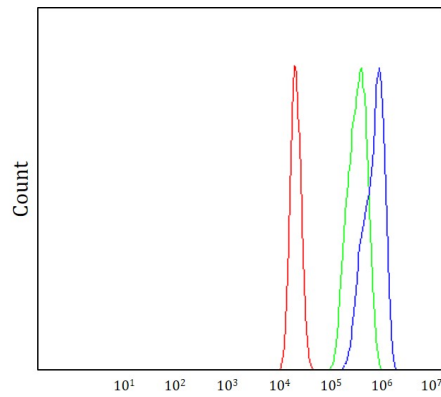
ARG44176 anti-NUBPL antibody WB image

Western blot: T-47D and HepG2 stained with ARG44176 anti-NUBPL antibody at 0.5 µg/mL dilution.



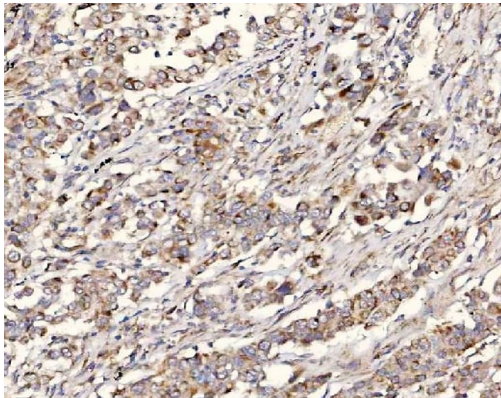
ARG44176 anti-NUBPL antibody FACS image

Flow Cytometry: MCF-7 stained with ARG44176 anti-NUBPL antibody at 1 µg/1x10⁶ cells dilution.



ARG44176 anti-NUBPL antibody IHC-P image

Immunohistochemistry: Human lung cancer stained with ARG44176 anti-NUBPL antibody at 2 µg/mL dilution.



ARG44176 anti-NUBPL antibody WB image

Western blot: Mouse liver and Mouse kidney stained with ARG44176 anti-NUBPL antibody at 0.5 µg/mL dilution.

