

ARG44177 anti-NUDCD1 antibody

Package: 50 µg
Store at: -20°C

Summary

Product Description	Rabbit Polyclonal antibody recognizes NUDCD1
Tested Reactivity	Hu, Ms, Rat
Tested Application	ICC/IF, IHC-P, WB
Host	Rabbit
Clonality	Polyclonal
Isotype	IgG
Target Name	NUDCD1
Species	Human
Immunogen	Recombinant protein of Human NUDCD1
Conjugation	Un-conjugated
Alternate Names	NUDCD1; NudC Domain Containing 1; CML66; Chronic Myelogenous Leukemia Tumor Antigen 66; NudC Domain-Containing Protein 1; Tumor Antigen CML66; FLJ14991; OVA66

Application Instructions

Application table	Application	Dilution
	ICC/IF	5 µg/ml
	IHC-P	2-5 µg/ml
	WB	0.25-0.5 µg/ml
Application Note	* The dilutions indicate recommended starting dilutions and the optimal dilutions or concentrations should be determined by the scientist.	

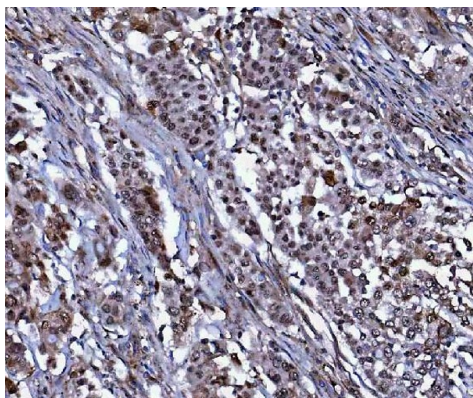
Properties

Form	Liquid
Purification	Affinity purification with immunogen.
Buffer	0.9% NaCl, 0.2% Na ₂ HPO ₄ , 0.05% Sodium azide and 5% BSA.
Preservative	0.05% Sodium azide
Stabilizer	5% BSA
Concentration	0.5 mg/ml
Storage instruction	For continuous use, store undiluted antibody at 2-8°C for up to a week. For long-term storage, aliquot and store at -20°C or below. Storage in frost free freezers is not recommended. Avoid repeated freeze/thaw cycles. Suggest spin the vial prior to opening. The antibody solution should be gently mixed before use.

Bioinformation

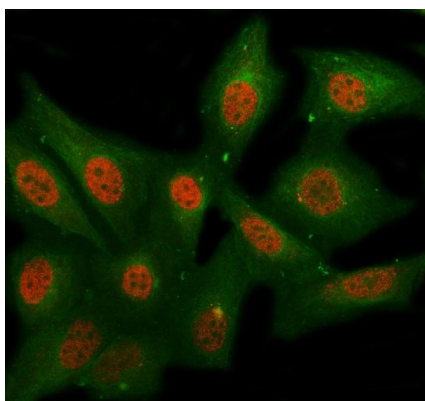
Gene Symbol	NUDCD1
Gene Full Name	Nudc Domain Containing 1
Background	Predicted to be involved in immune system process. Located in cytosol and nucleoplasm.
Function	Isoform 1 is the dominant immunogenic isoform and is capable of eliciting a humoral response in individuals with a variety of solid tumors. Expression of isoform 1 in a wide variety of malignancies as well as the presence of an immunogenic epitope suggest that it may be a suitable target for antigen-specific immunotherapy.
Calculated Mw	67 kDa
PTM	Phosphoprotein
Cellular Localization	Cytoplasm, Nucleus

Images



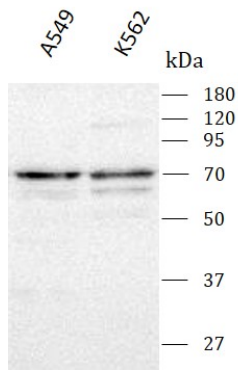
ARG44177 anti-NUDCD1 antibody IHC-P image

Immunohistochemistry: Human lung cancer stained with ARG44177 anti-NUDCD1 antibody at 2 µg/mL dilution.



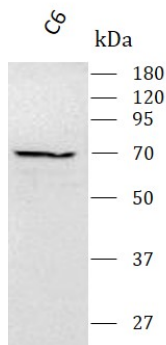
ARG44177 anti-NUDCD1 antibody ICC/IF image

Immunofluorescence: HeLa stained with ARG44177 anti-NUDCD1 antibody at 5 µg/mL dilution.



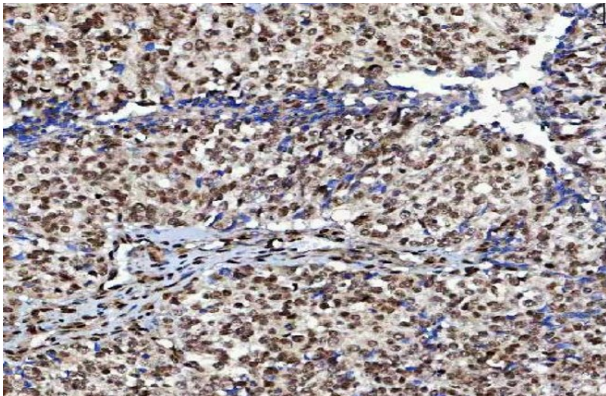
ARG44177 anti-NUDCD1 antibody WB image

Western blot: A549 and K562 stained with ARG44177 anti-NUDCD1 antibody at 0.5 µg/mL dilution.



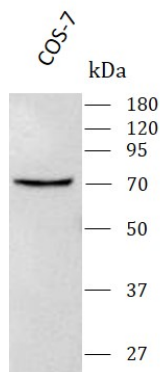
ARG44177 anti-NUDCD1 antibody WB image

Western blot: C6 stained with ARG44177 anti-NUDCD1 antibody at 0.5 µg/mL dilution.



ARG44177 anti-NUDCD1 antibody IHC-P image

Immunohistochemistry: Human ovarian cancer stained with ARG44177 anti-NUDCD1 antibody at 2 µg/mL dilution.



ARG44177 anti-NUDCD1 antibody WB image

Western blot: COS-7 stained with ARG44177 anti-NUDCD1 antibody at 0.5 µg/mL dilution.