

ARG44184 anti-MPHOSPH9 antibody

Package: 50 µg
Store at: -20°C

Summary

Product Description	Rabbit Polyclonal antibody recognizes MPHOSPH9
Tested Reactivity	Hu, Ms, Rat
Tested Application	FACS, ICC/IF, WB
Host	Rabbit
Clonality	Polyclonal
Isotype	IgG
Target Name	MPHOSPH9
Species	Human
Immunogen	Recombinant protein of Human MPHOSPH9
Conjugation	Un-conjugated
Alternate Names	MPHOSPH9; M-Phase Phosphoprotein 9; MPP9; MPP-9

Application Instructions

Application table	Application	Dilution
	FACS	1-3 µg/1x10 ⁶ cells
	ICC/IF	5 µg/ml
	WB	0.25-0.5 µg/ml
Application Note	* The dilutions indicate recommended starting dilutions and the optimal dilutions or concentrations should be determined by the scientist.	

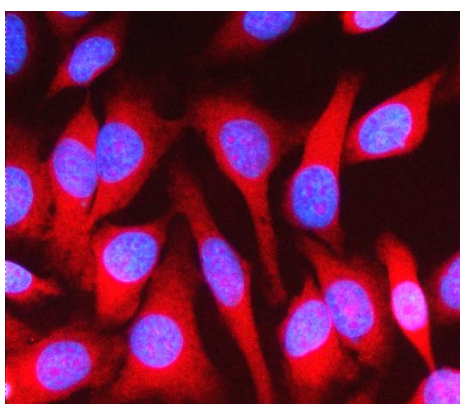
Properties

Form	Liquid
Purification	Affinity purification with immunogen.
Buffer	0.9% NaCl, 0.2% Na ₂ HPO ₄ , 0.05% Sodium azide and 5% BSA.
Preservative	0.05% Sodium azide
Stabilizer	5% BSA
Concentration	0.5 mg/ml
Storage instruction	For continuous use, store undiluted antibody at 2-8°C for up to a week. For long-term storage, aliquot and store at -20°C or below. Storage in frost free freezers is not recommended. Avoid repeated freeze/thaw cycles. Suggest spin the vial prior to opening. The antibody solution should be gently mixed before use.
Note	For laboratory research only, not for drug, diagnostic or other use.

Bioinformation

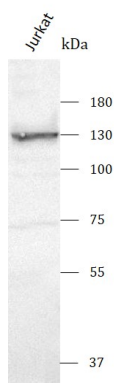
Gene Symbol	MPHOSPH9
Gene Full Name	M-Phase Phosphoprotein 9
Background	Located in Golgi apparatus and centriole. Implicated in multiple sclerosis.
Function	Negatively regulates cilia formation by recruiting the CP110-CEP97 complex (a negative regulator of ciliogenesis) at the distal end of the mother centriole in ciliary cells.
Calculated Mw	133 kDa
PTM	Isopeptide bond, Phosphoprotein, Ubl conjugation
Cellular Localization	Cytoplasm, Cytoskeleton, Golgi apparatus, Membrane

Images



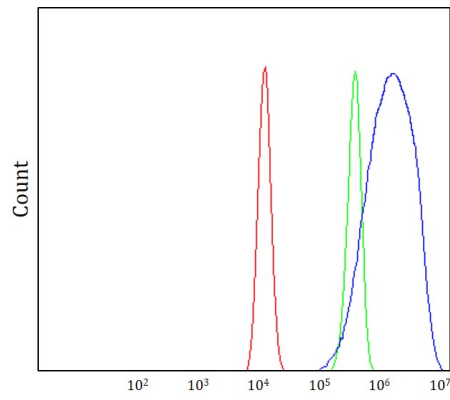
ARG44184 anti-MPHOSPH9 antibody ICC/IF image

Immunofluorescence: HeLa stained with ARG44184 anti-MPHOSPH9 antibody at 5 µg/mL dilution.



ARG44184 anti-MPHOSPH9 antibody WB image

Western blot: Jurkat stained with ARG44184 anti-MPHOSPH9 antibody at 0.5 µg/mL dilution.



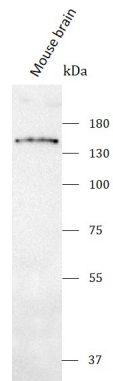
ARG44184 anti-MPHOSPH9 antibody FACS image

Flow Cytometry: HEL stained with ARG44184 anti-MPHOSPH9 antibody at $1\text{ }\mu\text{g}/1\times 10^6$ cells dilution.



ARG44184 anti-MPHOSPH9 antibody WB image

Western blot: Rat brain stained with ARG44184 anti-MPHOSPH9 antibody at $0.5\text{ }\mu\text{g}/\text{mL}$ dilution.



ARG44184 anti-MPHOSPH9 antibody WB image

Western blot: Mouse brain stained with ARG44184 anti-MPHOSPH9 antibody at $0.5\text{ }\mu\text{g}/\text{mL}$ dilution.